

2016-2017 OMTA CELLO THEORY LEVEL FOUR

Student's Name Key
 Teacher's Name _____

Written Score	<u>90</u>
Aural Score	<u>10</u>
TOTAL	<u>100</u>

1. NOTATION OF PITCH

Write the name of the notes on the line below each note. *Use accidentals as needed.*

12 pt.
2 pt.
each

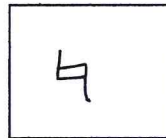
D F# F G Eb C

Draw the notes on the staff. **Use whole notes.**

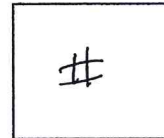
12 pt.
2 pt.
each

E C# D Bb

Draw a natural sign.



Draw a sharp sign.



2. NOTATION OF RHYTHM

Draw these notes or rests:

8 pt.
2 pt.
each



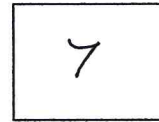
Half Rest



Dotted Quarter Note



Single Eighth Note

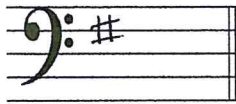


Eighth rest

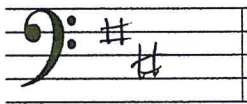
3. KEY SIGNATURES

Draw these major key signatures.

4 pt.
2 pt. each



G Major

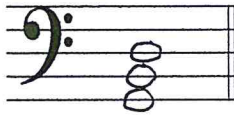


D Major

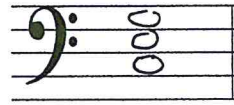
4. HARMONIC STUDY

Draw the following triads. Use whole notes.

4 pt.
2 pt. each



G Major



C Major

5. SCALES

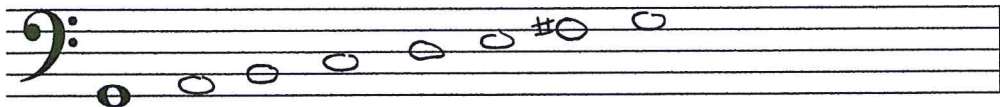
Circle the correct pattern of whole steps and half steps used in a Major scale.

W W H W W W H

H H W H H H W

W W H H W W H

4 pt.
2 pt. each
Draw the Major scale one octave ascending above the given note. Use whole notes. Use accidentals as needed. DO NOT USE A KEY SIGNATURE.



6. INTERVALS

Name these intervals. Circle the answer.

12 pt.
2 pt. each

Second
Third
Fourth

Second
Third
Fourth

Second
Third
Fourth

Identify these intervals as **harmonic** or **melodic**.

harmonic melodic harmonic

7. TERMINOLOGY

Match the **terms** with the **definitions**. Write the number on the line.

Terms	Definitions
<u>4</u> fermata	1. walking tempo
<u>6</u> accent	2. the end
<u>8</u> moderato	3. a curved line connecting two notes of the same pitch lengthening the value of the first note
<u>5</u> D. C. al Fine	4. to hold a note or rest
<u>3</u> tie	5. return to the beginning and play to Fine
<u>7</u> allegro	6. a note that is played louder than the notes around it
<u>2</u> Fine	7. quick, fast tempo
<u>9</u> contrary motion	8. medium or moderate tempo
<u>1</u> andante	9. two melodies moving in opposite direction

18 pt.
2 pt. each

TURN TO NEXT PAGE

8. MUSICAL EXAMPLE

Use the musical example to answer the questions below. *The measures are numbered.*

a. The tempo for this example tells us to play: *Circle the answer.*

walking tempo medium or moderate tempo **quick, fast, lively**

b. The example is in the key of D Major.

c. The dynamic marking in measure 1 means: *Circle the answer.*

medium soft soft **medium loud**

d. The interval circled in measure 2 is: *Circle the answer.*

2nd 3rd **4th**

e. The sign in measure 2 is called a: *Circle the answer.*

accent natural **fermata**

f. The sign under measure 3 is a: *Circle the answer.*

crescendo soft **diminuendo**

g. Which measure is to be played short and separated? *Circle the answer.*

one two **three**

h. The line under the notes in measure 4 is a: *Circle the answer.*

slur tie ritard

2016-2017 OMTA Aural Awareness Levels 3 & 4

Student's Name _____ *1 point each*

- | | | |
|-----|------------------|------------------|
| 1. | Same | Different |
| 2. | Staccato | Legato |
| 3. | Staccato | Legato |
| 4. | Piano | Forte |
| 5. | High | Low |
| 6. | Gradually Louder | Gradually Softer |
| 7. | Second | Third |
| 8. | Higher | Lower |
| 9. | Higher | Lower |
| 10. | Higher | Lower |