

2016-2017 OMTA THEORY LEVEL TWELVE

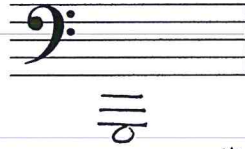
Student's Name \_\_\_\_\_ *Key* \_\_\_\_\_

Teacher's Name \_\_\_\_\_

Written Score	<u>86</u>
Aural Score	<u>14</u>
TOTAL	<u>100</u>

1. NOTATION OF PITCH

Using ledger lines **BELOW** the staff, draw a G.



4 pt.  
2 pt. each

Using ledger lines **ABOVE** the staff, draw an F#.



2. NOTATION OF RHYTHM

The last measure of each example is incomplete. At the end (right) of each example, CIRCLE the note or rest that gives each measure the **correct number of counts (beats)**.

Example 1:   
 Example 2:

8 pt.  
2 pt. each

At the beginning (left) of each example, circle the correct **time signature**.

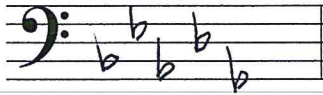
Example 1:   
 Example 2:

TURN TO THE NEXT PAGE

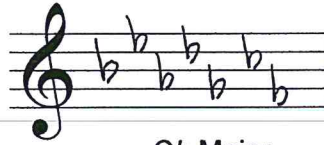
3. KEY SIGNATURES

Draw these key signatures.

4 pt.  
2 pt. each



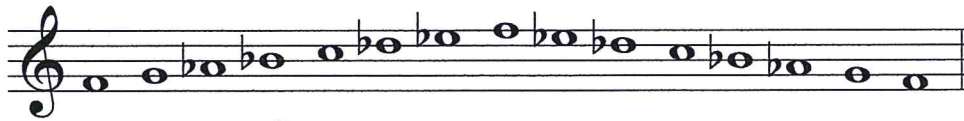
Bb minor



Cb Major

4. SCALES

Identify each of the following scales. Include Major, natural minor, harmonic minor or melodic minor in the answer.



f natural minor

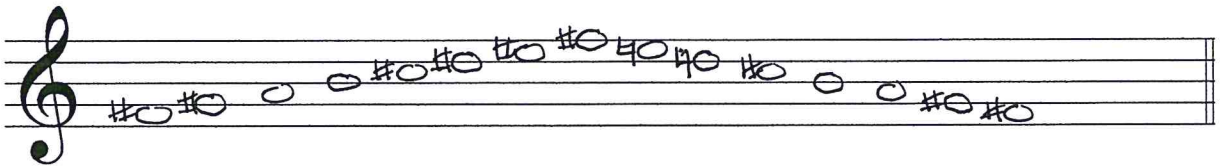


C# Major

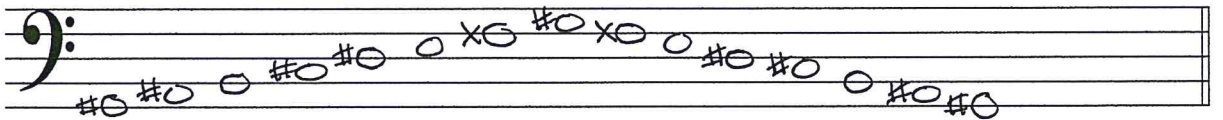
8 pt.  
2 pt. each

Draw each scale one octave **ascending and descending**. Use whole notes. Use accidentals as needed **in both directions**. DO NOT USE KEY SIGNATURES.

f# melodic minor



G# harmonic minor



5. HARMONIC STUDY

On the staff below, draw the **root position triads** for the key of **E Major**.  
Use whole notes. Use accidentals as needed.



tonic                      dominant                      mediant  
supertonic              subdominant              leading tone  
 dominant                  leading tone                  submediant

10pt.  
2pt.  
each

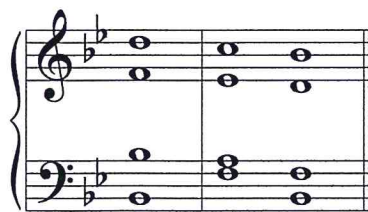
On the staff below, draw each **triad** in root position above the given note. Use whole notes.  
Use accidentals as needed.



diminished      augmented

Below each example:

- (1) identify the key (all keys are Major);
- (2) Identify each chord with Roman numerals in the key;
- (3) identify the cadence type as **authentic, plagal, half, or deceptive**.



18pt.  
2pt.  
each

Key Bb  
Chord I V I

Key G  
Chord I ii V

Key F  
Chord I V vi

Cadence Type Authentic

Cadence Type half

Cadence type deceptive



a. The musical example overall is in the key of d minor.  
(Include Major or minor in the answer.)

b. The words above measure 1 mean: *Circle the answer.*

as if                      with fire                      very slow and sustained

c. The notes circled in measures 1 and 2 form the \_\_\_\_\_ scale: *Circle the answer.*

natural minor                      harmonic minor                      melodic minor

d. The chord circled in the bass clef in measure 10 is: *Circle the answer.*

tonic                      subdominant                      leading tone

e. The chord circled in the bass clef in measure 15 is a (n): *Circle the answer.*

Major chord                      diminished chord                      augmented chord

f. The chord progression circled in measures 17-18 is: *Circle the answer. Check the clef.*

i - V                      V - i                      iv - I

This is an example of a (n): *Circle the answer.*

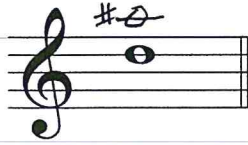
authentic cadence                      plagal cadence                      half cadence

14 pt.  
2 pt. each

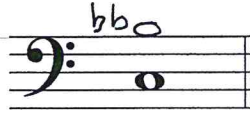
**7. INTERVALS**

On the staff below, draw each interval above the given note. Use whole notes. Use accidentals as needed.

6 pt.  
2 pt. each



Augmented 5<sup>th</sup>



diminished 7<sup>th</sup>



Perfect 4<sup>th</sup>

**8. TERMINOLOGY**

On the line in front of each term, write the **number** of its definition.

**Terms**

**Definitions**

4 bravura

1. as if

3 subdominant

2. brilliant showy passage for solo instrument or voice

7 mediant

3. fourth degree of the scale

6 ben

4. musical passage requiring considerable technical skill

1 quasi

5. sixth degree of the scale

5 submediant

6. well, very

2 cadenza

7. third degree of the scale

8. seventh degree of the scale

14 pt.  
2 pt. each

END OF WRITTEN TEST

2016-2017 OMTA Aural Awareness Levels 11 & 12

Student's Name \_\_\_\_\_ 1 point each

1. Major natural minor melodic minor harmonic minor

2. Major natural minor melodic minor harmonic minor

3. Major natural minor melodic minor harmonic minor

4. Major minor diminished augmented

5. Major minor diminished augmented

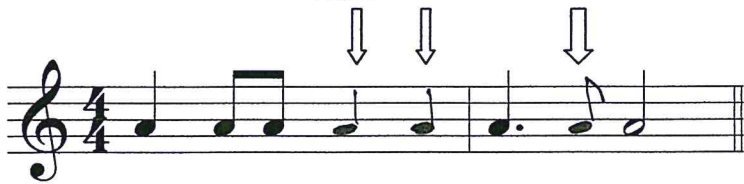
6. minor 6<sup>th</sup> minor 7<sup>th</sup> Major 3<sup>rd</sup>

7. Perfect 4<sup>th</sup> Major 6<sup>th</sup> minor 6<sup>th</sup>

8. Authentic Plagal Deceptive

9. Authentic Plagal Deceptive

10. Authentic Plagal Deceptive

11. 

12. 

13. 

14. 