

2016-2017 OMTA THEORY LEVEL TWO

Student's Name \_\_\_\_\_ Key \_\_\_\_\_

Teacher's Name \_\_\_\_\_

Written Score	<u>90</u>
Aural Score	<u>10</u>
<b>TOTAL SCORE</b>	<u>100</u>

1. Write the letter names of each note on the blank line.

16 pt.  
2 pt.  
each

D      G      C      A

F      D      B      C

2. Draw the notes on the staff. Use whole notes.

16 pt.  
2 pt. each

**F**      **B**      **C**      **D**

**D**      **A**      **G**      **E**

3. Draw a line from the note to its name.

8 pt.  
2 pt. each

whole note  
dotted half note  
half note  
quarter note

4 pts.  
2 pt. each

4. The time signature 4/4 tells us there are 4 beats (counts) in each measure and the quarter note receives one beat (count).

5. Circle the correct time signature for each musical example.

6 pt.  
2 pt. each

2 3 4  
4 4 4

2 3 4  
4 4 4

2 3 4  
4 4 4

6. Tell whether these notes are a skip or a step.

4 pt.  
2 pt. each

skip                      step

7. Match the **terms** with the **definitions**. Write the number on the line.

**TERMS****DEFINITIONS**4 half step

1. the speed of a musical composition

5 dynamics

2. two keys with one key between them

1 tempo

3. gradually slower

6 repeat

4. two keys with no key between them

2 whole step

5. how loud or how soft the music is played

3 ritardando  
(ritard or rit.)

6. play again

8. Use a word from the word list to complete each sentence.

<i>mf</i>	sharp	interval	flat	<i>mp</i>
-----------	-------	----------	------	-----------

a. To raise a note one-half step is called a sharp.

b. The distance between two notes is called is called an interval.

c. The sign that tells us to play moderately loud is called mf.

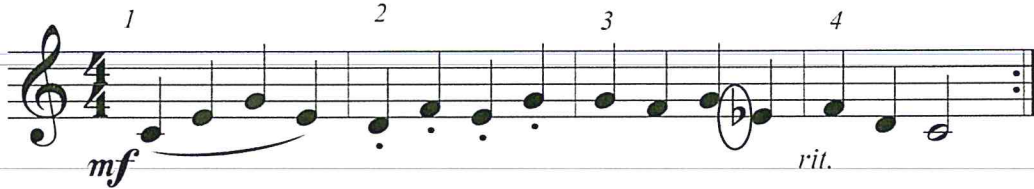
d. To lower a note one-half step is called a flat.

e. The sign that tells us to play moderately soft is called mp.

TURN TO THE NEXT PAGE

1. MUSICAL EXAMPLE

Use the musical example below to answer the questions below. *The measures are numbered.*



a. This example is written in the: *Circle the answer.*

**treble clef**

**bass clef**

14 pt.  
2 pt.  
each

b. The *mf* in measure 1 tells us to play medium loud or mf.

c. The notes in measure 1 will be played:: *Circle the answer.*

**legato**

**medium soft**

**staccato**

d. Which measure is played staccato? 2

e. The sign circled in measure 3 is a: *Circle the answer.*

**sharp**

**flat**

f. The sign below measure 4 tells us to play: *Circle the answer.*

**gradually faster**

**gradually louder**

**gradually slower**

g. The sign at the end of the example means to \_\_\_\_\_: *Circle the answer.*

**stop**

**play again**

**staff**

2016-1017 OMTA Aural Awareness Levels 1-2

Student's Name \_\_\_\_\_ 1 point each \_\_\_\_\_

- |     |                  |                  |
|-----|------------------|------------------|
| 1.  | High             | Low              |
| 2.  | Loud             | Soft             |
| 3.  | Same             | Different        |
| 4.  | Higher           | Lower            |
| 5.  | Higher           | Lower            |
| 6.  | Going higher     | Going lower      |
| 7.  | Going higher     | Going lower      |
| 8.  | Legato           | Staccato         |
| 9.  | Legato           | Staccato         |
| 10. | Gradually louder | Gradually softer |