

2016-2017 OMTA THEORY LEVEL FOUR

Student's Name \_\_\_\_\_ Key \_\_\_\_\_

Teacher's Name \_\_\_\_\_

Written Score	<u>90</u>
Aural Score	<u>10</u>
<b>TOTAL</b>	<u>100</u>

**1. NOTATION OF PITCH**

Write the name of the notes on the line below each note. *Use accidentals as needed.*

12 pt.  
2 pt. each

  D       F#       F       G       Eb       A  

Draw the notes on the staff. **Use whole notes.**

12 pt.  
2 pt. each

**E**                      **C#**                      **D**                      **Bb**

Draw a natural sign. ♮

Draw a sharp sign. ♯

**2. NOTATION OF RHYTHM**

Draw these notes or rests:

8 pt.  
2 pt. each

**Half Rest**   **Dotted Quarter Note**   **Single Eighth Note**   **Eighth rest**

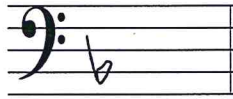
**3. KEY SIGNATURES**

Draw these major key signatures.

4 pts.  
2 pts. each



G Major



F Major

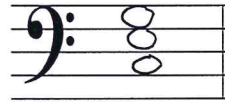
**4. HARMONIC STUDY**

Draw the following triads. Use whole notes.

4 pt.  
2 pt. each



F Major



C Major

**5. SCALES**

Circle the correct pattern of whole steps and half steps used in a Major scale.

2 pt.

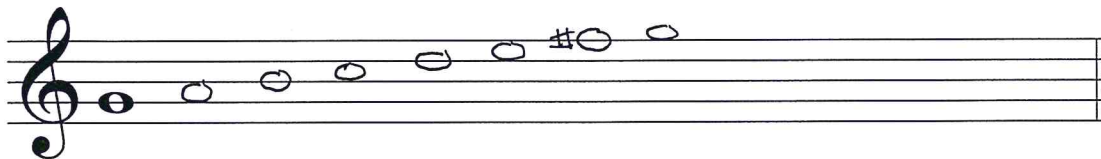
**W W H W W H**

H H W H H H W

W W H H W W H

Draw the Major scale one octave ascending above the given note. Use whole notes. Use accidentals as needed. DO NOT USE A KEY SIGNATURE.

2 pt.



**6. INTERVALS**

Name these intervals. *Circle the answer.*

Identify these intervals as **harmonic** or **melodic**.

12 pt.  
2 pt. each

harmonic

melodic

harmonic

**7. TERMINOLOGY**

Match the **terms** with the **definitions**. Write the number on the line.

**Terms**

**Definitions**

- 4 fermata
- 6 accent
- 8 moderato
- 5 D. C. al Fine
- 3 tie
- 7 allegro
- 2 Fine
- 9 contrary motion
- 1 andante

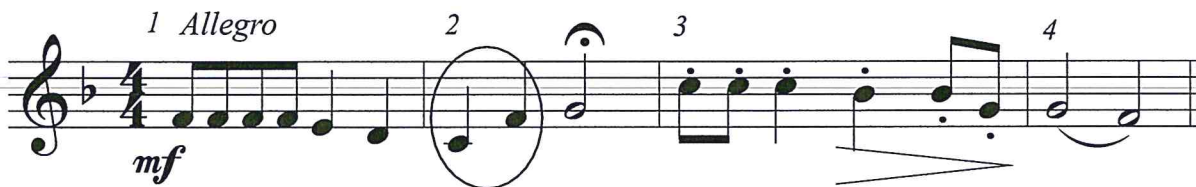
- 1. walking tempo
- 2. the end
- 3. a curved line connecting two notes of the same pitch lengthening the value of the first note
- 4. to hold a note or rest
- 5. return to the beginning and play to Fine
- 6. a note that is played louder than the notes around it
- 7. quick, fast tempo
- 8. medium or moderate tempo
- 9. music moving in the opposite direction

18 pt.  
2 pt. each

TURN TO NEXT PAGE

8. MUSICAL EXAMPLE

Use the musical example to answer the questions below. *The measures are numbered.*



a. The tempo for this example tells us to play: *Circle the answer.*

walking tempo      medium or moderate tempo      **quick, fast, lively**

b. The example is in the key of F Major.

c. The dynamic marking in measure 1 means: *Circle the answer.*

1/6 pt.  
2 pt. each

medium soft      soft      **medium loud**

d. The interval circled in measure 2 is: *Circle the answer.*

2nd      3rd      **4th**

e. The sign in measure 2 is called a: *Circle the answer.*

accent      natural      **fermata**

f. The sign under measure 3 is a: *Circle the answer.*

crescendo      soft      **diminuendo**

g. Which measure is to be played short and separated? *Circle the answer.*

one      two      **three**

h. The line under the notes in measure 4 is a: *Circle the answer.*

**slur**      tie      ritard

2016-2017 OMTA Aural Awareness Levels 3 & 4

Student's Name \_\_\_\_\_ 1 point each

1. Same Different

2. Staccato Legato

3. Staccato Legato

4. Piano Forte

5. High Low

6. Gradually Louder Gradually Softer

7. Second Third

8. Higher Lower

9. Higher Lower

10. Higher Lower