

2016-2017 OMTA VIOLA THEORY LEVEL FOUR

Student's Name _____ Key _____
 Teacher's Name _____

Written Score	<u>90</u>
Aural Score	<u>10</u>
TOTAL	<u>100</u>

1. NOTATION OF PITCH

Write the name of the notes on the line below each note. *Use accidentals as needed.*

12 pt.
2 pt. each

D F# F G E^b A

Draw the notes on the staff. Use whole notes.

E C# D Bb

12 pt.
2 pt. each

Draw a natural sign. ♮

Draw a sharp sign. ♯

2. NOTATION OF RHYTHM

Draw these notes or rests:

8 pt.
2 pt. each

▬	♩.	♪	♪
Half Rest	Dotted Quarter Note	Single Eighth Note	Eighth rest

3. KEY SIGNATURES

Draw these major key signatures.

4 pt.
2 pt. each



G Major



D Major

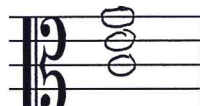
4. HARMONIC STUDY

Draw the following triads. Use whole notes.

4 pt.
2 pt. each



G Major



C Major

5. SCALES

Circle the correct pattern of whole steps and half steps used in a Major scale.

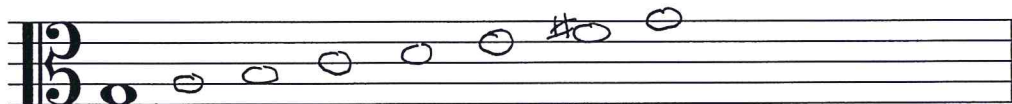
W W H W W W H

H H W H H H W

W W H H W W H

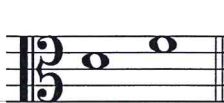
4 pt.
2 pt. each

Draw the Major scale one octave ascending above the given note. Use whole notes. Use accidentals as needed. DO NOT USE A KEY SIGNATURE.

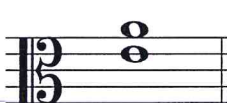


6. INTERVALS

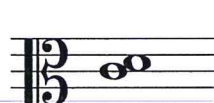
Name these intervals. *Circle the answer.*



Second
Third
Fourth



Second
Third
Fourth

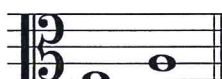


Second
Third
Fourth

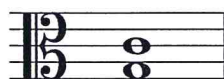
12 pt. Identify these intervals as **harmonic** or **melodic**.
2 pt. each



harmonic



melodic



harmonic

7. TERMINOLOGY

Match the **terms** with the **definitions**. Write the number on the line.

18 pt.
2 pt. each

Terms

4 fermata

6 accent

8 moderato

5 D. C. al Fine

3 tie

7 allegro

2 Fine

9 contrary motion

1 andante

Definitions

1. walking tempo

2. the end

3. a curved line connecting two notes of the same pitch lengthening the value of the first note

4. to hold a note or rest

5. return to the beginning and play to Fine

6. a note that is played louder than the notes around it

7. quick, fast tempo

8. medium or moderate tempo

9. two melodies moving in opposite direction

TURN TO NEXT PAGE

8. MUSICAL EXAMPLE

Use the musical example to answer the questions below. *The measures are numbered.*

a. The tempo for this example tells us to play: *Circle the answer.*

walking tempo medium or moderate tempo **quick, fast, lively**

b. The example is in the key of G Major.

c. The dynamic marking in measure 1 means: *Circle the answer.*

medium soft soft **medium loud**

d. The interval circled in measure 2 is: *Circle the answer.*

2nd 3rd **4th**

e. The sign in measure 2 is called a: *Circle the answer.*

accent natural **fermata**

f. The sign under measure 3 is a: *Circle the answer.*

crescendo soft **diminuendo**

g. Which measure is to be played short and separated? *Circle the answer.*

one two **three**

h. The line under the notes in measure 4 is a: *Circle the answer.*

slur tie ritard

2016-2017 OMTA Aural Awareness Levels 3 & 4

Student's Name _____ 1 point each _____

- | | | |
|-----|------------------|------------------|
| 1. | Same | Different |
| 2. | Staccato | Legato |
| 3. | Staccato | Legato |
| 4. | Piano | Forte |
| 5. | High | Low |
| 6. | Gradually Louder | Gradually Softer |
| 7. | Second | Third |
| 8. | Higher | Lower |
| 9. | Higher | Lower |
| 10. | Higher | Lower |