

Student's Name Key
 Teacher's Name _____

| | |
|--------------------|------------|
| Written Score | 88 |
| Aural Score | 12 |
| TOTAL SCORE | 100 |

NOTATION OF PITCH

Write the letter name of each note on the line below.



1. B 2. F 3. E 4. G

Fill in the fingerings for the notes.



Identify the note name of the fingering diagram.



7. Bb 8. Bb
 or (alternate Bb or Button Bb)

NOTATION OF RHYTHM

Draw in the box.

9. Eighth rest

10. One eighth note

Draw **ONE NOTE** on the line to complete the measure.

11. $\frac{3}{4}$ 

12. $\frac{6}{8}$ 

Draw **ONE REST** on the line to complete the measure.

13. $\frac{2}{4}$ 

14. $\frac{4}{4}$ 

KEY SIGNATURES

Identify the Major key signatures. Use Major in the answer.



15. D major



16. Eb major

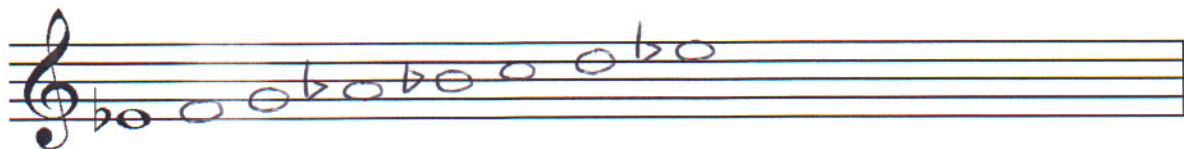
Draw the scales one octave ascending.

Use whole notes.

Use accidentals as needed.



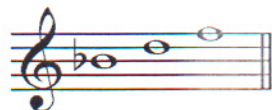
17. e natural minor



18. E flat Major

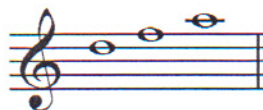
HARMONIC STUDY

Identify the arpeggios. Circle Major or minor.



19. Bb

Major minor



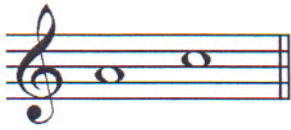
20. D

Major minor

TURN TO THE NEXT PAGE

INTERVALS

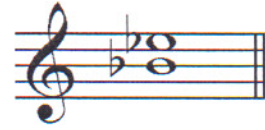
Identify the interval. Circle the answer.



21. minor 3rd
Major 3rd



22. 5th
4th



23. 4th
minor 3rd

TERMINOLOGY

Match the **terms** with the **definitions**. Write the letter on the blank line.

TERMS

24. D scale degree
25. G coda
26. H contrary motion
27. J accelerando
28. A arpeggio
29. I a tempo
30. E parallel motion
31. C ledger lines
32. B vibrato
33. F allegretto

DEFINITIONS

- A. Triad (chord) played one note at a time
B. Wavy tone produced by rapid breath pulse
C. Lines added above or below the staff to increase the range
D. Name and/or number given to each note of the scale
E. Two melodies played at the same time and moving in the same direction
F. Slower than allegro and faster than moderato
G. A section or passage added to the end of a musical composition
H. Two melodies played together and moving in opposite directions
I. Return to the original tempo after a ritard or accelerando
J. Gradually faster

TURN TO THE NEXT PAGE


Match the symbols with the definitions. Write the letter on the blank line.

TERMS

34. F 

35. D *pp*

36. E ’

37. B 

38. C *ff*

DEFINITIONS

- A. Rapid slurred alteration of neighboring tones
- B. Dal Segno, from the sign
- C. Fortissimo, very loud
- D. Pianissimo, very soft
- E. A marking that means to breath
- F. Staccato, to play short or detached

TURN TO THE NEXT PAGE

MUSICAL EXAMPLE

Use the musical example to answer the questions below. The measures are numbered.

The musical example shows a single staff in 4/4 time with a key signature of one flat (Bb). The tempo is marked 'Andante'. The piece is divided into four numbered measures. Measure 1 begins with a piano (*p*) dynamic and a crescendo hairpin. Measure 2 features a trill symbol above the second measure rest. Measure 3 has a slur over the notes. Measure 4 concludes with a decrescendo hairpin.

39. What does the term above measure one mean? Circle the answer.

- Walking Quick Moderate

40. What does the dynamic marking mean? Circle the answer.

- Piano Mezzo forte Mezzo piano

41. What is the symbol under measures one and two? Circle the answer.

- Crescendo Accent Diminuendo

42. How are the notes in measures three and four articulated? Circle the answer.

- Tongued Slurred Accented

43. What is the key of the musical example? Circle the answer.

- G Major C Major F Major

44. What is the symbol above measure two? Circle the answer.

- Fermata Trill Accent

2018-2019 OMTA Aural Awareness Levels 5 & 6

Student's Name Ker

Aural Score
12


1. 


2. 

3. 

- | | | |
|-----|-------------|------------|
| 4. | Andante | Allegro |
| 5. | Parallel | Contrary |
| 6. | Fourth | Third |
| 7. | Third | Second |
| 8. | Same | Different |
| 9. | Crescendo | Diminuendo |
| 10. | Accelerando | Ritardando |

8. Rhythm Example



11. 

12. 