

***Written Test = 2 points each question**
2019-2020 OMTA THEORY LEVEL FOUR- CELLO

Student's Name _____

Teacher's Name _____

Written Score	90
Aural Score	10
TOTAL SCORE	100

NOTATION OF PITCH

Write the letter name of each note on the line below.



+12

1. E 2. A[#] 3. G 4. B^b 5. A 6. C

Draw the notes on the staff. Use whole notes.



+8

7. G 8. B[#] 9. F 10. C^b

DRAW IN THE BOX.

+4

11. Sharp sign 12. Natural sign

NOTATION OF RHYTHM

13. Whole rest 14. Dotted quarter note 15. Dotted half note

+10

16. Half rest 17. Single eighth note

TURN TO THE NEXT PAGE

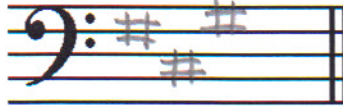
KEY SIGNATURES

Draw the major key signatures.

+4



18. G Major

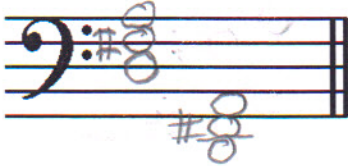


19. A Major

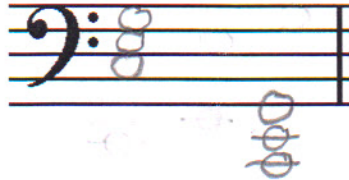
HARMONIC STUDY

Draw the triads. Use whole notes.

+4



20. D Major



21. C Major

SCALES

Write the pattern of whole steps and half steps used in a Major scale.

Write W for whole step and H for half step.

+4

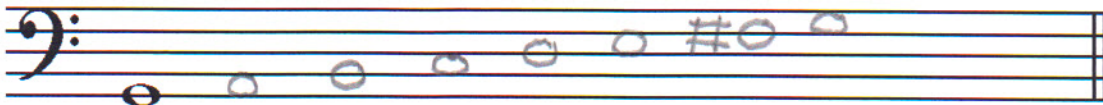
22. W W H W W W H

Draw the Major scale one octave **ascending** above the given note.

Use whole notes.

Use accidentals as needed.

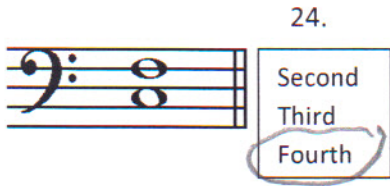
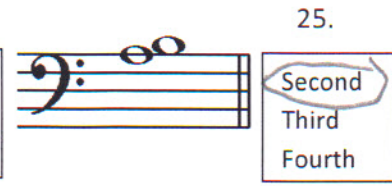

DO NOT USE A KEY SIGNATURE.



23.

INTERVALS

Identify the intervals. Circle the answer.

24.  25.  26. 

+12

Identify the intervals as **harmonic** or **melodic**.



27. harmonic

28. melodic

29. harmonic

TERMINOLOGY

Match the **terms** with the **definitions**. Write the letter on the blank line.

TERMS

30. C D.C. al Fine
 31. A andante
 32. I tie
 33. B parallel motion
 34. E accent
 35. G melodic interval
 36. H fermata
 37. D allegro
 38. F harmonic interval

+18

DEFINITIONS

- A. Walking tempo
- B. Music moving in the same direction
- C. Return to the beginning and play to Fine
- D. Quick, fast tempo
- E. A note that is played louder than the notes around it
- F. The distance between two notes which are played together
- G. The distance between two notes which are played separately
- H. To hold a note or rest
- I. A curved line connecting two notes of the same pitch lengthening the value of the first note

TURN TO THE NEXT PAGE

MUSICAL EXAMPLE

Use the musical example to answer the questions below. **The measures are numbered.**

1 **Allegro** 2 3 4

mf

H14

39. The example is in the key of G Major.
40. What does the tempo for this example mean? Circle the answer.
 Walking tempo Medium or moderate tempo Quick, fast, lively
41. What does the dynamic marking in measure one mean? Circle the answer.
 Medium soft Soft Medium loud
42. What is the interval circled in measure three? Circle the answer.
2nd 3rd 4th
43. What is the sign under measure three called? Circle the answer.
 Crescendo Diminuendo
44. What is the symbol over the first note in measure three? Circle the answer.
Accent Tie Ritard
45. What is the sign over the note in measure four? Circle the answer.
 Tie Fermata Accent

***Aural Test = 1 point each question**
2019-2020 OMTA Aural Awareness Levels 3 & 4

Student's Name _____

Aural Score

10

- | | | |
|-----|------------------|------------------|
| 1. | Same | Different |
| 2. | Staccato | Legato |
| 3. | Staccato | Legato |
| 4. | Piano | Forte |
| 5. | High | Low |
| 6. | Gradually Louder | Gradually Softer |
| 7. | Second | Third |
| 8. | Higher | Lower |
| 9. | Higher | Lower |
| 10. | Higher | Lower |