

# 2019-2020 OMTA THEORY LEVEL FOUR - CELLO

1

Student's Name \_\_\_\_\_

Teacher's Name \_\_\_\_\_

Written Score	
Aural Score	
<b>TOTAL SCORE</b>	

## NOTATION OF PITCH

Write the letter name of each note on the line below.



1. \_\_\_\_\_ 2. \_\_\_\_\_ 3. \_\_\_\_\_ 4. \_\_\_\_\_ 5. \_\_\_\_\_ 6. \_\_\_\_\_

Draw the notes on the staff. Use whole notes.



7. G

8. B#

9. F

10. Cb

DRAW IN THE BOX.

11. Sharp sign

12. Natural sign

## NOTATION OF RHYTHM

13. Whole rest

14. Dotted quarter note

15. Dotted half note

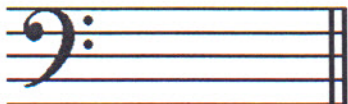
16. Half rest

17. Single eighth note

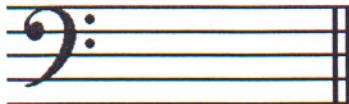
TURN TO THE NEXT PAGE

**KEY SIGNATURES**

Draw the major key signatures.



18. G Major



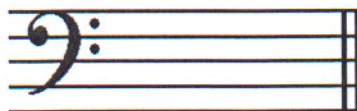
19. A Major

**HARMONIC STUDY**

Draw the triads. Use whole notes.



20. D Major



21. C Major

**SCALES**

Write the pattern of whole steps and half steps used in a Major scale.

Write W for whole step and H for half step.

22. \_\_\_\_\_

Draw the Major scale one octave **ascending** above the given note.

Use whole notes.

Use accidentals as needed.

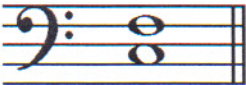
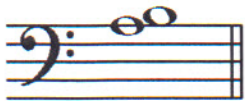

DO NOT USE A KEY SIGNATURE.




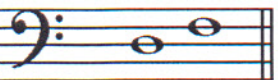
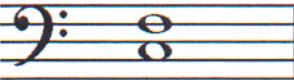
23.

**INTERVALS**

Identify the intervals. Circle the answer.

24.	25.	26.
		
Second Third Fourth	Second Third Fourth	Second Third Fourth

Identify the intervals as **harmonic** or **melodic**.

		
---	---	--

27. \_\_\_\_\_

28. \_\_\_\_\_

29. \_\_\_\_\_

**TERMINOLOGY**

Match the **terms** with the **definitions**. Write the letter on the blank line.

**TERMS**

- 30. \_\_\_\_\_ D.C. al Fine
- 31. \_\_\_\_\_ andante
- 32. \_\_\_\_\_ tie
- 33. \_\_\_\_\_ parallel motion
- 34. \_\_\_\_\_ accent
- 35. \_\_\_\_\_ melodic interval
- 36. \_\_\_\_\_ fermata
- 37. \_\_\_\_\_ allegro
- 38. \_\_\_\_\_ harmonic interval

**DEFINITIONS**

- A. Walking tempo
- B. Music moving in the same direction
- C. Return to the beginning and play to Fine
- D. Quick, fast tempo
- E. A note that is played louder than the notes around it
- F. The distance between two notes which are played together
- G. The distance between two notes which are played separately
- H. To hold a note or rest
- I. A curved line connecting two notes of the same pitch lengthening the value of the first note

TURN TO THE NEXT PAGE

MUSICAL EXAMPLE

Use the musical example to answer the questions below. **The measures are numbered.**

39. The example is in the key of \_\_\_\_\_ Major.
40. What does the tempo for this example mean? Circle the answer.  
 Walking tempo      Medium or moderate tempo      Quick, fast, lively
41. What does the dynamic marking in measure one mean? Circle the answer.  
 Medium soft      Soft      Medium loud
42. What is the interval circled in measure three? Circle the answer.  
 2<sup>nd</sup>      3<sup>rd</sup>      4<sup>th</sup>
43. What is the sign under measure three called? Circle the answer.  
 Crescendo      Diminuendo
44. What is the symbol over the first note in measure three? Circle the answer.  
 Accent      Tie      Ritard
45. What is the sign over the note in measure four? Circle the answer.  
 Tie      Fermata      Accent

END OF WRITTEN TEST

## 2019-2020 OMTA Aural Awareness Levels 3 & 4

Student's Name \_\_\_\_\_

Aural Score

- |     |                  |                  |
|-----|------------------|------------------|
| 1.  | Same             | Different        |
| 2.  | Staccato         | Legato           |
| 3.  | Staccato         | Legato           |
| 4.  | Piano            | Forte            |
| 5.  | High             | Low              |
| 6.  | Gradually Louder | Gradually Softer |
| 7.  | Second           | Third            |
| 8.  | Higher           | Lower            |
| 9.  | Higher           | Lower            |
| 10. | Higher           | Lower            |