

***Written Test = 2 points each question**
2019-2020 OMTA THEORY LEVEL FOUR - VIOLIN

Student's Name _____

Teacher's Name _____

Written Score	90
Aural Score	10
TOTAL SCORE	100

NOTATION OF PITCH

Write the letter name of each note on the line below.



+12

1. E 2. A# 3. G 4. B^b 5. A 6. C

Draw the notes on the staff. Use whole notes.



+8

7. G 8. B# 9. F 10. Cb

DRAW IN THE BOX.

+4

11. Sharp sign



12. Natural sign



NOTATION OF RHYTHM

13. Whole rest



14. Dotted quarter note



15. Dotted half note



+10

16. Half rest



17. Single eighth note

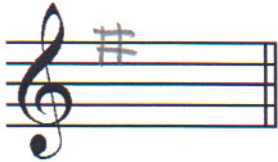


TURN TO THE NEXT PAGE

KEY SIGNATURES

Draw the major key signatures.

+4



18. G Major



19. A Major

HARMONIC STUDY

Draw the triads. Use whole notes.

+4



20. D Major



21. C Major

SCALES

Write the pattern of whole steps and half steps used in a Major scale.

Write W for whole step and H for half step.

22. W W H W W W H

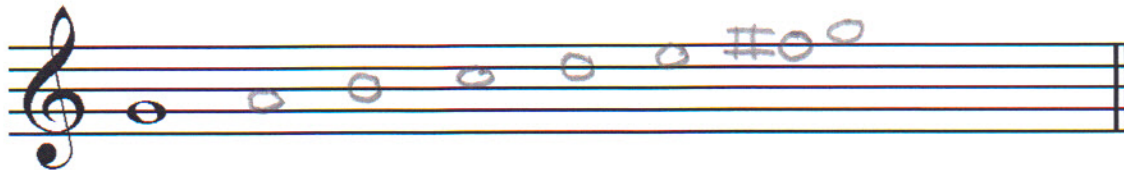
+4

Draw the Major scale one octave **ascending** above the given note.

Use whole notes.

Use accidentals as needed.

DO NOT USE A KEY SIGNATURE.



23.

INTERVALS

Identify the intervals. Circle the answer.

24.  25.  26. 

+12

Identify the intervals as **harmonic** or **melodic**.

27. harmonic 28. melodic 29. harmonic

TERMINOLOGY

Match the **terms** with the **definitions**. Write the letter on the blank line.

TERMS

+18

- 30. C D.C. al Fine
- 31. A andante
- 32. I tie
- 33. B parallel motion
- 34. E accent
- 35. G melodic interval
- 36. H fermata
- 37. D allegro
- 38. F harmonic interval

DEFINITIONS

- A. Walking tempo
- B. Music moving in the same direction
- C. Return to the beginning and play to Fine
- D. Quick, fast tempo
- E. A note that is played louder than the notes around it
- F. The distance between two notes which are played together
- G. The distance between two notes which are played separately
- H. To hold a note or rest
- I. A curved line connecting two notes of the same pitch lengthening the value of the first note

2019-2020 OMTA THEORY LEVEL FOUR - VIOLIN

MUSICAL EXAMPLE

Use the musical example to answer the questions below. The measures are numbered.

+14

1 **Allegro** 2 3 4

mf

39. The example is in the key of G Major.

40. What does the tempo for this example mean? Circle the answer.

Walking tempo

Medium or moderate tempo

Quick, fast, lively

41. What does the dynamic marking in measure one mean? Circle the answer.

Medium soft

Soft

Medium loud

42. What is the interval circled in measure three? Circle the answer.

2nd

3rd

4th

43. What is the sign under measure three called? Circle the answer.

Crescendo

Diminuendo

44. What is the symbol over the first note in measure three? Circle the answer.

Accent

Tie

Ritard

45. What is the sign over the note in measure four? Circle the answer.

Tie

Fermata

Accent

END OF WRITTEN TEST

***Aural Test = 1 point each question**
2019-2020 OMTA Aural Awareness Levels 3 & 4

Student's Name _____

Aural Score

10

- | | | |
|-----|------------------|------------------|
| 1. | Same | Different |
| 2. | Staccato | Legato |
| 3. | Staccato | Legato |
| 4. | Piano | Forte |
| 5. | High | Low |
| 6. | Gradually Louder | Gradually Softer |
| 7. | Second | Third |
| 8. | Higher | Lower |
| 9. | Higher | Lower |
| 10. | Higher | Lower |