

**\*Written Test = 2 points each question**  
**2019-2020 OMTA THEORY LEVEL 5 - FLUTE**

Student's Name Key  
 Teacher's Name \_\_\_\_\_

Written Score	88
Aural Score	12
<b>TOTAL SCORE</b>	<b>100</b>

**NOTATION OF PITCH**

Write the letter name of each note on the line below.



1. B                      2. F                      3. E                      4. G

Fill in the fingerings for the notes.



Identify the note name of the fingering diagram.



7. Bb                      8. Bb  
 or (alternate Bb or Button Bb)

**NOTATION OF RHYTHM**

Draw in the box.

9. Eighth rest

10. One eighth note

# 2019-2020 OMTA THEORY LEVEL FIVE - FLUTE

Draw **ONE NOTE** on the line to complete the measure.

11.  $\frac{3}{4}$  

12.  $\frac{6}{8}$  

Draw **ONE REST** on the line to complete the measure.

13.  $\frac{2}{4}$  

14.  $\frac{4}{4}$  

## KEY SIGNATURES

Identify the Major key signatures. Use Major in the answer.



15. D major



16. Eb major

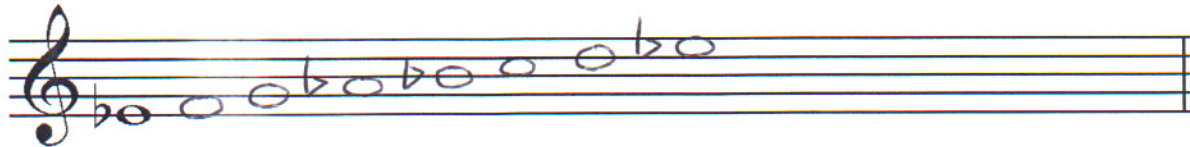
Draw the scales one octave ascending.

Use whole notes.

Use accidentals as needed.



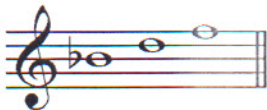
17. e natural minor



18. E flat Major

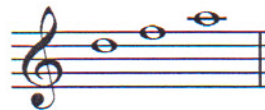
## HARMONIC STUDY

Identify the arpeggios. Circle Major or minor.



19. Bb

Major minor



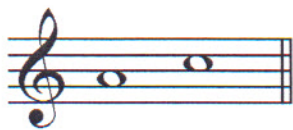
20. D

Major minor

TURN TO THE NEXT PAGE

**INTERVALS**

Identify the interval. Circle the answer.



21. minor 3<sup>rd</sup>  
Major 3<sup>rd</sup>



22. 5<sup>th</sup>  
4<sup>th</sup>



23. 4<sup>th</sup>  
minor 3<sup>rd</sup>

**TERMINOLOGY**

Match the **terms** with the **definitions**. Write the letter on the blank line.

**TERMS**

24. D scale degree  
25. G coda  
26. H contrary motion  
27. J accelerando  
28. A arpeggio  
29. I a tempo  
30. E parallel motion  
31. C ledger lines  
32. B vibrato  
33. F allegretto

**DEFINITIONS**

- A. Triad (chord) played one note at a time  
B. Wavy tone produced by rapid breath pulse  
C. Lines added above or below the staff to increase the range  
D. Name and/or number given to each note of the scale  
E. Two melodies played at the same time and moving in the same direction  
F. Slower than allegro and faster than moderato  
G. A section or passage added to the end of a musical composition  
H. Two melodies played together and moving in opposite directions  
I. Return to the original tempo after a ritard or accelerando  
J. Gradually faster

TURN TO THE NEXT PAGE

# 2019-2020 OMTA THEORY LEVEL 5 - FLUTE


Match the **symbols** with the **definitions**. Write the letter on the blank line.

## TERMS

34. F 

35. D *pp*

36. E ,

37. B 

38. C *ff*

## DEFINITIONS

- A. Rapid slurred alteration of neighboring tones
- B. Dal Segno, from the sign
- C. Fortissimo, very loud
- D. Pianissimo, very soft
- E. A marking that means to breath
- F. Staccato, to play short or detached

TURN TO THE NEXT PAGE

MUSICAL EXAMPLE

Use the musical example to answer the questions below. The measures are numbered.

The musical example shows a four-measure phrase in 4/4 time, marked *Andante*. Measure 1 begins with a piano (*p*) dynamic and a crescendo hairpin. Measure 2 features a slur over the notes and a trill symbol above the second measure. Measure 3 has a slur over the notes. Measure 4 ends with a fermata. The key signature has one flat (Bb).

39. What does the term above measure one mean? Circle the answer.

- Walking       Quick       Moderate

40. What does the dynamic marking mean? Circle the answer.

- Piano       Mezzo forte       Mezzo piano

41. What is the symbol under measures one and two? Circle the answer.

- Crescendo       Accent       Diminuendo

42. How are the notes in measures three and four articulated? Circle the answer.

- Tongued       Slurred       Accented

43. What is the key of the musical example? Circle the answer.

- G Major       C Major       F Major

44. What is the symbol above measure two? Circle the answer.

- Fermata       Trill       Accent

