

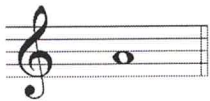
## 2021 OMTA THEORY LEVEL THREE—CLARINET

Student's Name Key

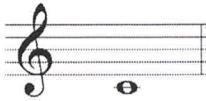
Written Score	90
Aural Score	10
<b>TOTAL SCORE</b>	<b>100</b>

Teacher's Name \_\_\_\_\_

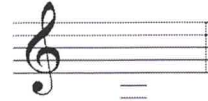
Write the letter name of each note on the line below.



A



C



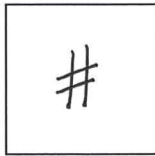
F

Draw the symbol in the box.

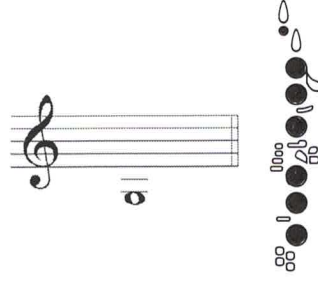
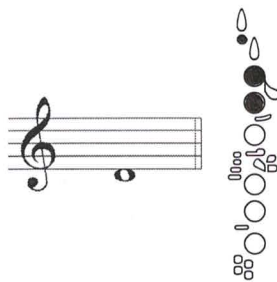
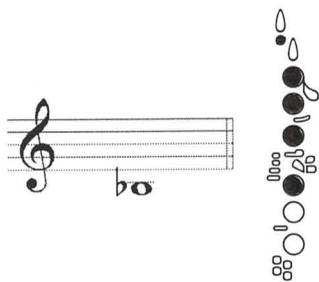
Flat sign



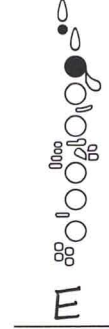
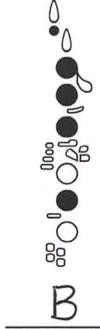
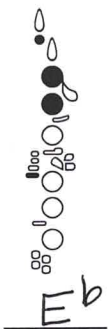
Sharp sign



Identify the following notes. Beside the staff, fill in the fingerings on the clarinet.



Identify the note name from the fingering diagrams.



TURN TO THE NEXT PAGE

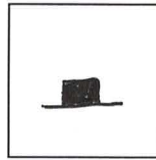
## 2021 OMTA THEORY LEVEL THREE—CLARINET

Draw the symbol in the box.

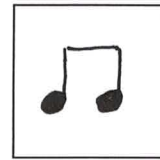
Quarter Note



Half Rest



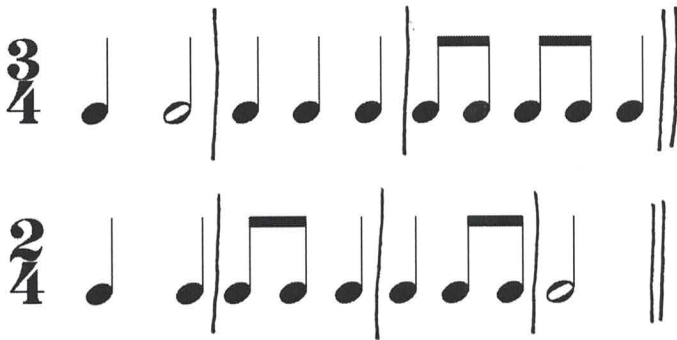
Two-eighth notes (beamed)



The time signature  $\frac{4}{4}$  tells us there are 4 beats in each measure.

The time signature  $\frac{4}{4}$  tells us the quarter note receives 1 beat(s).

Draw bar lines in the example. Include a double bar line.



TURN TO THE NEXT PAGE

## 2021 OMTA THEORY LEVEL THREE—CLARINET

Identify the following key signatures.



C



G

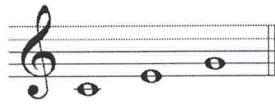
Circle the correct pattern of whole steps and half steps used in a Major scale.

WHWWHWW

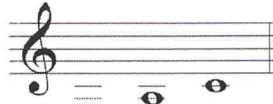
W<sup>h</sup>WHWW<sup>h</sup>

HWWWHWW

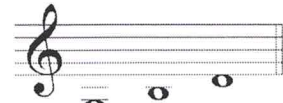
Identify the Major arpeggios.



C

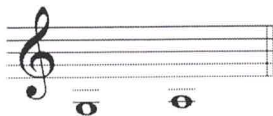


F

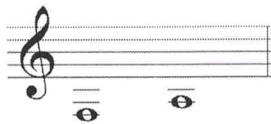


G

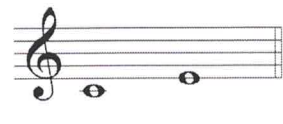
Identify the intervals as seconds or thirds.



2nd



3rd



3rd

TURN TO THE NEXT PAGE

## 2021 OMTA THEORY LEVEL THREE—CLARINET

Match the symbols with the definitions. Write the letter on the blank line.

E ,

D b

C 

B 8<sup>va</sup>

A 

G #

H 

- A. Slur—two or more notes of different pitch played on one breath with only the first note tongued
- B. When written above notes, it means to play the notes an octave higher. When written below notes, it means to play notes an octave lower.
- C. Crescendo—gradually louder
- D. An accidental that lowers the pitch one half step
- E. A marking that means to take a breath
- F. Sharps or flats in a specific order and pattern after a clef sign
- G. An accidental that raises the pitch one half step
- H. To hold a note or rest for extra value.

Use a word from the word list to complete each sentence.

Octave	Melodic Interval	Triad
Crescendo	Diminuendo	Natural Sign

An octave is an interval of eight notes.

A natural sign cancels a sharp or flat.

A melodic interval is the distance between two notes which are played separately creating a "melody".

A diminuendo means to play gradually softer.

A triad is a chord of three tones, consisting of a root, 3rd, and 5th above the root.

TURN TO THE NEXT PAGE

## 2021 OMTA THEORY LEVEL THREE—CLARINET

Use the music example to answer the questions below. The measures are numbered.

The music example shows a four-measure melody in 4/4 time. Measure 1 starts with a piano (*p*) dynamic. Measure 2 has a circled interval between two notes. Measure 3 has four arrows pointing down to four notes. Measure 4 has a breath mark. The melody ends with a double bar line.

The time signature of this melody tells us there are 4 beats in the measure.

What key is the music example written in? Circle the answer.

C Major

F Major

G Major

How should the notes be played under the arrows in measure three? Circle the answer.

Staccato

Legato

What does the dynamic marking mean in measure one? Circle the answer.

Soft

Loud

What is the interval circled in measure two? Circle the answer.

Second

Third

In what measure is the breath mark? Circle the answer.

One

Two

Three

Four

END OF WRITTEN EXAM

★ Aural Test = 1 point each question

### 2021 OMTA AURAL AWARENESS LEVELS 3 & 4

Aural Score

Student's Name Key

1. Same

Different

2. Staccato

Legato

3. Higher

Lower

4. Piano, *p*

Forte, *f*

5. Legato

Staccato

6. High

Low

7. Higher

Lower

8. Second

Third

9. Gradually louder

Gradually softer

10. Higher

Lower