

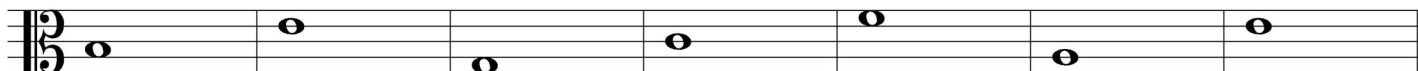
2021 OMTA THEORY LEVEL THREE—VIOLA

Student's Name _____

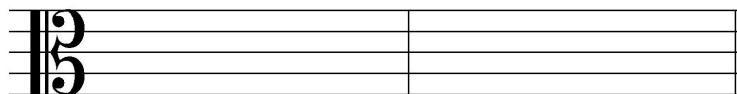
Written Score	
Aural Score	
TOTAL SCORE	

Teacher's Name _____

Write the letter name of each note on the line below.

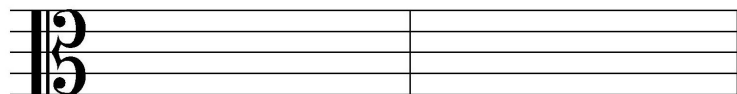


Write the notes on the staff. Use whole notes.



E

C



A

F

TURN TO THE NEXT PAGE

2021 OMTA THEORY LEVEL THREE—VIOLA

Circle the loudest dynamic marking.

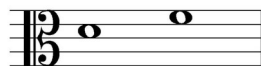
mf *f* *p* *mp*

Circle the softest dynamic marking.

f *mf* *mp* *p*

Label the intervals as a second (2nd) or third (3rd).





Use a word from the word list to complete each sentence.

WORD LIST

harmonic interval	crescendo
natural	fermata
down bow	ritardando

A(n) _____ cancels a sharp or a flat.

☞ is the symbol for _____, which means to hold a note or rest for extra value.


A(n) _____ is the distance between two notes which are played together, creating harmony.

TURN TO THE NEXT PAGE

2021 OMTA THEORY LEVEL THREE—VIOLA

Match the terms with the definitions. Write the letter of the correct definition on the blank line.

TERMS

_____ crescendo (cresc. )

_____ key signature

_____ fermata

_____ natural

_____ ritardando (rit.)

_____ half step

_____ root

_____ whole step

_____ *mp*

_____ *mf*

DEFINITIONS

- A. Cancels a sharp or a flat
- B. The closest distance between two notes
- C. To play gradually louder
- D. To play gradually slower
- E. Mezzo forte, medium or moderately loud
- F. To hold a note or rest for extra value
- G. Sharps or flats in a specific order and pattern after a clef sign
- H. Mezzo piano, medium or moderately soft
- I. The note in any chord that gives the chord its name
- J. Equal to two half steps

2021 OMTA THEORY LEVEL THREE—VIOLA

Use the music example below to answer the following questions. The measures are numbered. Circle the correct answer or fill in the blank for each question.

The musical notation shows a single staff in bass clef with a key signature of one sharp (F#) and a 3/4 time signature. The piece is marked *p* (piano) at the beginning. Measure 1 contains a quarter note on G4 with an up-bow sign above it. Measure 2 contains four eighth notes: A4, B4, C5, and B4. Measure 3 contains four eighth notes: A4, G4, F#4, and E4, with a down-bow sign above the first note and a slur under the entire measure. Measure 4 contains a quarter note on D4, followed by a repeat sign (two dots and a vertical line) which is circled.

What is the sign above the first note in measure 1?

Up bow

Down bow

The time signature for this melody indicates there are _____ beats in each measure.

What is the definition of the dynamic marking below measure 1?

Loud

Soft

Medium loud

Medium soft

How should the notes in measures 2 be played?

Legato

Staccato

What is the sign above the first note in measure 3?

Up bow

Down bow

What is the curved line under measures 3 and 4?

Slur

Tie

What is the meaning of the sign circled in measure 4?

The end

Play again

END OF WRITTEN EXAM

2021 OMTA AURAL AWARENESS LEVELS 3 & 4

Aural Score

Student's Name _____

- | | |
|---------------------|------------------|
| 1. Same | Different |
| 2. Staccato | Legato |
| 3. Higher | Lower |
| 4. Piano, <i>p</i> | Forte, <i>f</i> |
| 5. Legato | Staccato |
| 6. High | Low |
| 7. Higher | Lower |
| 8. Second | Third |
| 9. Gradually louder | Gradually softer |
| 10. Higher | Lower |

END OF AURAL AWARENESS EXAM