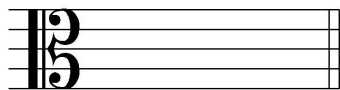
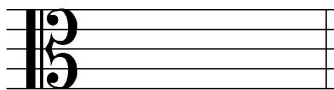


2021 OMTA THEORY LEVEL SEVEN—VIOLA

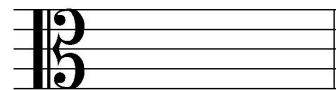
Draw the key signatures.



A Major

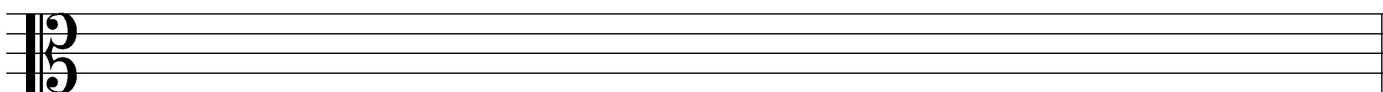


E♭ Major

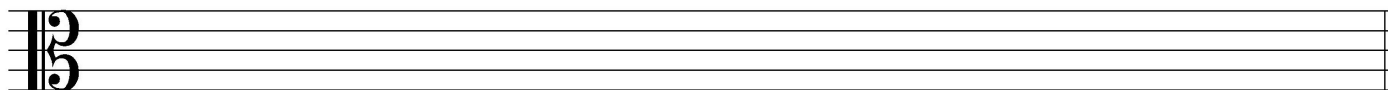


e minor

Draw the scales one octave ascending and descending using whole notes. Use accidentals as needed in both directions. Do not use a key signature.

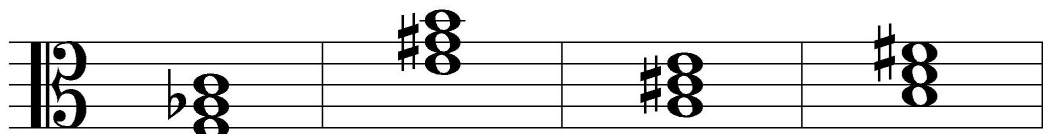


B♭ Major



c natural minor

On the blank line, write the root of the triads and circle whether the triads are Major or minor.



_____ Major Major Major Major
 _____ minor _____ minor _____ minor _____ minor

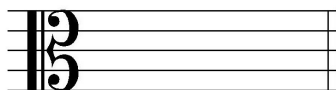
Draw the triad in root position using whole notes. Use accidentals as needed.



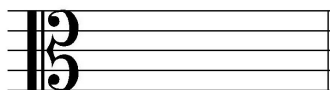
E-flat Major



g minor



A Major



f-sharp minor

TURN TO THE NEXT PAGE

2021 OMTA THEORY LEVEL SEVEN—VIOLA

Circle the correct answer.



Major 6th
minor 6th
Perfect 5th

Major 3rd
Perfect 4th
minor 3rd

Major 2nd
minor 2nd
Perfect 4th

Draw the interval above each note using a whole note. Use accidentals as needed.



Major 7th

Perfect 5th

minor 6th

Match the terms with the definitions. Write the letter of the correct definition on the blank line.

TERMS

- _____ lento
- _____ subito
- _____ phrase
- _____ con moto
- _____ perfect intervals
- _____ allargando (allarg.)
- _____ cantabile
- _____ presto
- _____ fortepiano, *fp*
- _____ col legno
- _____ Relative Major and minor keys

DEFINITIONS

- A. In a singing style
- B. Loud followed immediately by soft
- C. A very fast tempo, faster than allegro
- D. Broadening or slowing
- E. Two keys that share the same key signature
- F. Suddenly
- G. Unison, 4th, 5th, and octave
- H. With motion
- I. Striking the string with the bow –stick instead of the hair.
- J. A slow tempo
- K. A musical idea similar to a sentence

TURN TO THE NEXT PAGE

2021 OMTA THEORY LEVEL SEVEN—VIOLA

Use the music example below to answer the following questions. The measures are numbered. Circle the correct answer or fill in the blank for each question.

Presto

1 *f* 2 3 *subito p* 4 *subito p*

The music example is in the key of _____. Include Major or minor in the answer.

What should be the time signature for this piece?

6
8

3
4

4
4

What is the meaning of presto in measure 1?

Lively, quick

Espressivo

Very fast, faster than allegro

What is the meaning of *subito* in measure 3 and 4?

Little by little

With emphasis

Suddenly

The tonic triad appears as an arpeggio in measure _____.

