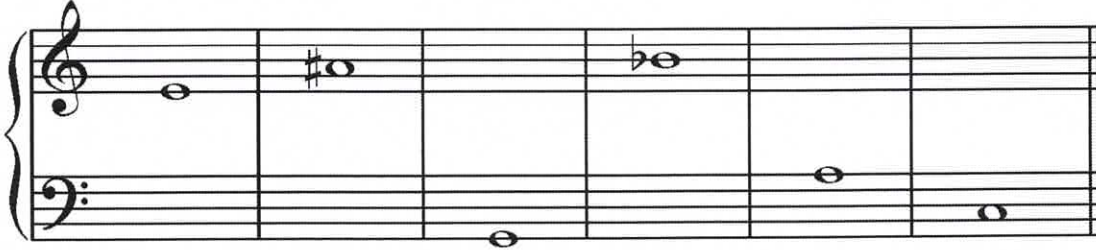


★ Written Test = 2 points each question
2019-2020 OMTA THEORY LEVEL FOUR

Student's Name Key
 Teacher's Name _____

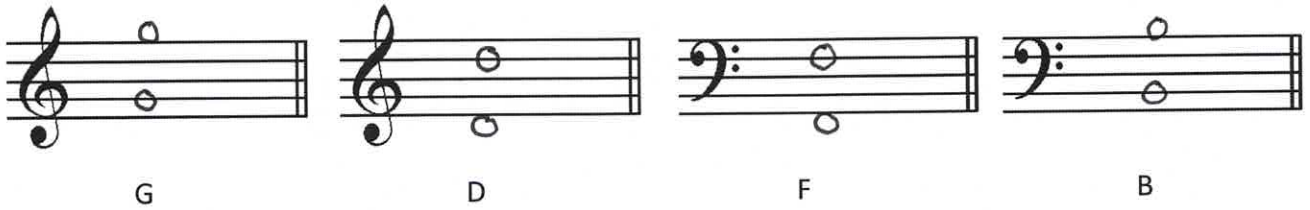
Written Score	90
Aural Score	10
TOTAL SCORE	100

Write the letter name of each note on the line below. Use accidentals as needed.



E A# G B^b A C
 (A sharp) (B flat)

Draw the notes on the staff. Use whole notes.

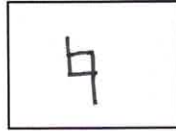


Draw the correct answer in the box.

Sharp sign



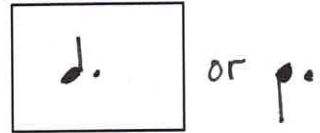
Natural sign



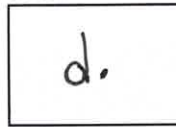
Whole rest



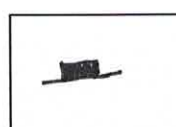
Dotted quarter note



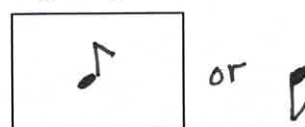
Dotted half note



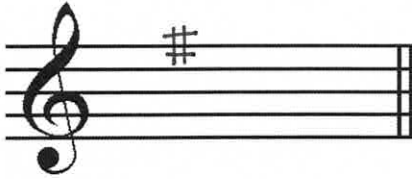
Half rest



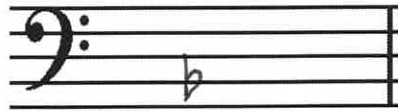
Single eighth note



Draw the Major key signatures.

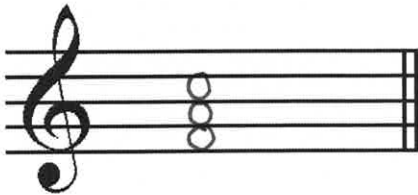


G Major

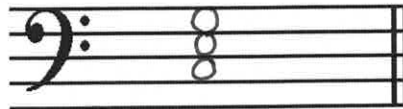


F Major

Draw the triads. Use whole notes.



F Major



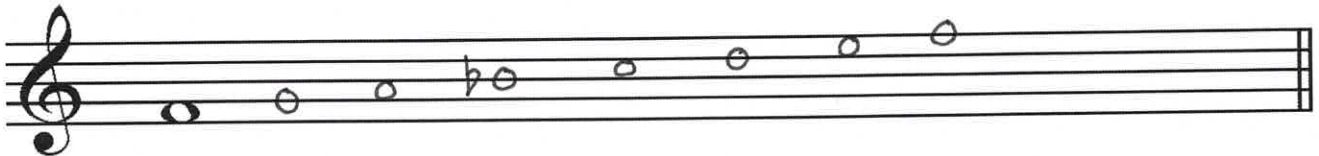
C Major

Write the pattern of whole steps and half steps used in a Major scale.

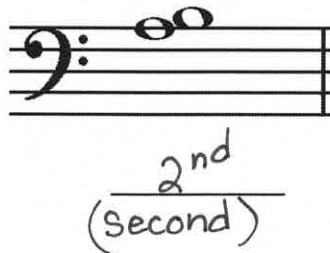
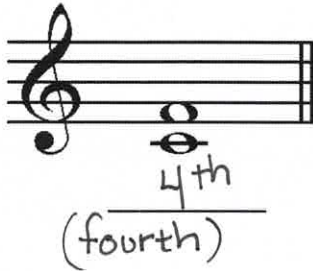
Write W for whole step and H for half step.

W W H W W W H

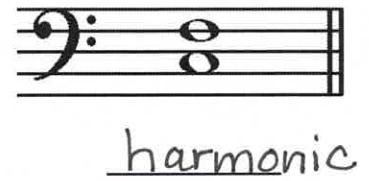
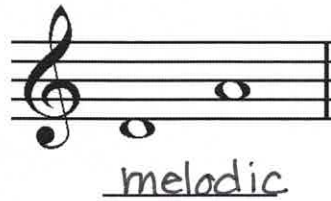
Draw a Major scale one octave going up starting with the note provided. Use whole notes. Use accidentals as needed. **DO NOT USE A KEY SIGNATURE.**



Label the intervals.



Label the intervals as **harmonic** or **melodic**.



Match the **terms** with the **definitions**. Write the letter on the blank line.

TERMS

DEFINITIONS

- C D.C. al Fine
- A andante
- I tie
- B parallel motion
- E accent
- G melodic interval
- H fermata
- D allegro
- F harmonic interval

- A. Walking tempo
- B. Music moving in the same direction
- C. Return to the beginning and play to Fine
- D. Quick, fast tempo
- E. A note that is played louder than the notes around it
- F. The distance between two notes which are played together
- G. The distance between two notes which are played separately
- H. To hold a note or rest
- I. A curved line connecting two notes of the same pitch lengthening the value of the first note

2019-2020 OMTA THEORY LEVEL FOUR

Use the music example below to answer the following questions. The measures are numbered.

Allegro

1 2 3 4

mf

The example is in the key of G Major.

What is the meaning of the tempo marking? Circle the answer.

Walking tempo

Medium or moderate tempo

Quick, fast, lively

What is the meaning of the dynamic marking below measure 1 mean? Circle the answer.

Medium soft

Soft

Medium loud

What is the interval circled in measure 3? Circle the answer.

2nd

3rd

4th

What is the sign under measure 3? Circle the answer.

Crescendo

Diminuendo

What is the symbol over the first note in measure 3? Circle the answer.

Accent

Tie

Ritard

What is the sign over the note in measure 4? Circle the answer.

Tie

Fermata

Accent

★ Aural Test = 1 point each question

2019-2020 OMTA AURAL AWARENESS LEVEL 3 & 4

Aural Score

10

Student's Name Key

1. Same

Different

2. Staccato

Legato

3. Staccato

Legato

4. Piano

Forte

5. High

Low

6. Gradually Louder

Gradually Softer

7. Second

Third

8. Higher

Lower

9. Higher

Lower

10. Higher

Lower

END OF AURAL AWARENESS TEST