

★ Written Test = 2 points each question

### 2021 OMTA THEORY LEVEL FIVE—VIOLA

Student's Name Key

Written Score	90
Aural Score	10
<b>TOTAL SCORE</b>	<b>100</b>

Teacher's Name \_\_\_\_\_

Write the letter name of each note on the line below. Use accidentals as needed.

A musical staff in bass clef with six whole notes. The notes are: D (below the staff), G (first space), B# (second space), E (below the staff), Eb (first space), and D# (second space). Below the staff, the letter names are written and underlined: D, G, B#, E, E<sup>b</sup>, and D#.

Draw the notes on the staff. Use whole notes. Use accidentals as needed.

Two musical staves in bass clef. The first staff has two whole notes: D# (below the staff) and A# (second space). The second staff has two whole notes: Gb (below the staff) and F (below the staff). Above the Gb note is the text "b<sub>0</sub> (or) b<sub>0</sub>" and above the F note is "(or) <sup>0</sup>".

Draw one note under the arrow to complete one measure in the given time signatures.

A musical staff in 4/4 time. The first measure contains a quarter note followed by a dotted quarter note. The second measure contains a quarter note followed by an eighth note, which is followed by a beamed eighth note. An arrow points down to the second measure.

A musical staff in 2/4 time. The first measure contains a quarter note followed by a dotted quarter note. The second measure contains a quarter note followed by an eighth note. An arrow points down to the first measure.

A musical staff in 3/4 time. The first measure contains a quarter note followed by a dotted quarter note. The second measure contains a quarter note followed by an eighth note. An arrow points down to the second measure.

TURN TO THE NEXT PAGE

## 2021 OMTA THEORY LEVEL FIVE—VIOLA

Draw one rest under the arrow to complete one measure in the given time signatures.



On the lines below, write the correct time value of each note(s) or rest in  $\frac{4}{4}$  time.

### NOTES AND RESTS

$\text{r}$   $\frac{1}{2}$  beat

$\text{q}$  1 beat

$\text{h}$  2 beats

$\text{beamed eighth notes}$  1 beat

$\text{rest}$  2 beats

### TIME VALUE LIST

$\frac{1}{2}$  beat

1 beat

$1 \frac{1}{2}$  beats

2 beats

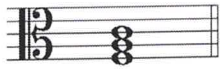
3 beats

4 beats

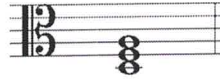
TURN TO THE NEXT PAGE

## 2021 OMTA THEORY LEVEL FIVE—VIOLA

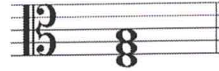
On the blank line, write the root of the triads and circle whether the triads are Major or minor.



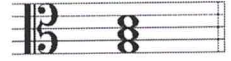
F Major  
(f) minor



d Major  
(D) minor

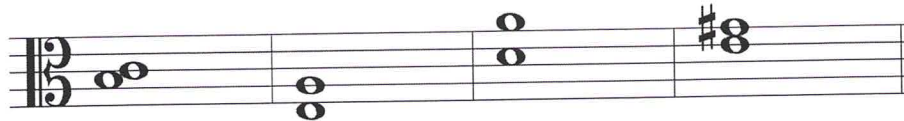


e Major  
(E) minor



G Major  
(g) minor

Circle the correct intervals.

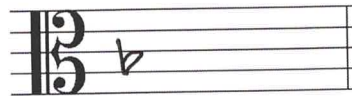


Second	Fifth	Fourth	Third
Third	Fourth	Fifth	Second
Fifth	Third	Third	Fourth

Draw the key signatures.



G Major



F Major

## 2021 OMTA THEORY LEVEL FIVE—VIOLA

Which scale degree is raised in the harmonic minor scale? Circle the correct answer.

Third

Fifth

Seventh

Draw the e harmonic minor scale one octave going up, one note above each arrow. Use whole notes. Use accidentals as needed. Do not use a key signature.

(2 pts)

Match the terms with the definitions. Write the letter of the correct definition on the blank line.

### TERMS

- E D. S.  
A allegretto  
B a tempo  
H harmonic minor scale  
D ledger lines  
G pianissimo  
C fortissimo  
F melodic minor scale

### DEFINITIONS

- A. A tempo slower than allegro and faster than moderato  
 B. Return to the original tempo after a ritardando or an accelerando  
 C. Very Loud  
 D. Lines added above or below the staff to increase the range  
 E. From the sign  
 F. A natural minor scale with a raised sixth and seventh scale degree ascending and lowered 6th and 7th degree descending  
 G. Very soft  
 H. A natural minor scale with a raised seventh scale degree, ascending and descending

TURN TO THE NEXT PAGE

## 2021 OMTA THEORY LEVEL FIVE—VIOLA

Use the music example below to answer the following questions. The measures are numbered. Circle the correct answer or fill in the blank for each question.

The musical notation shows a single staff in 4/4 time with a key signature of one sharp (F#). The first measure is circled, containing a G4 quarter note and a B4 quarter note. The dynamic marking *mp* is below the first measure. The piece concludes with a *rit.* marking. Measures 2, 3, and 4 are numbered. A crescendo hairpin is located under measures 3 and 4.

The music example is written in which Major key?     D    

What is the meaning of the dynamic marking in measure 1?

Very loud

Medium soft

Medium loud

What is the interval circled in measure 1?

minor 3rd

4th

5th

What is the sign under measure 3 and 4?

Crescendo

Diminuendo

What is the meaning of the term in measure 4?

To play gradually louder

To play gradually slower

END OF WRITTEN EXAM

# 2021 OMTA AURAL AWARENESS LEVELS 5 & 6

Aural Score

Student's Name \_\_\_\_\_

1.