

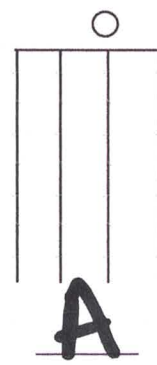
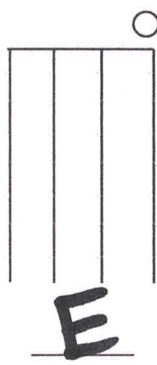
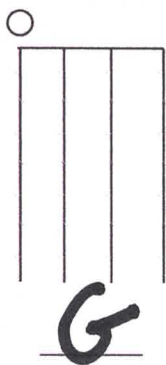
2021 OMTA THEORY LEVEL ONE—VIOLIN

Student's Name _____

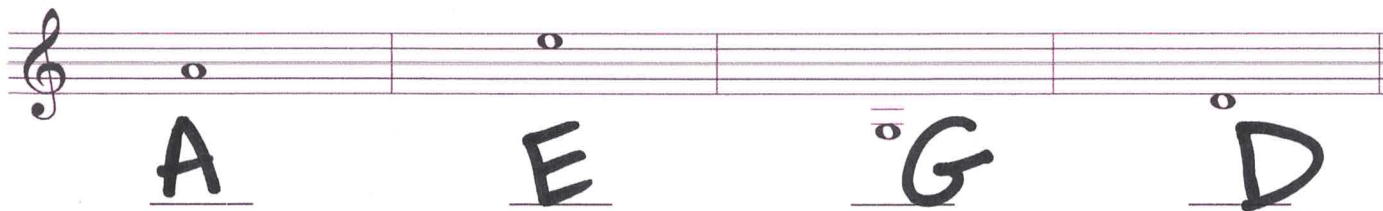
| | |
|--------------------|--|
| Written Score | |
| Aural Score | |
| TOTAL SCORE | |

Teacher's Name _____

Name the open strings.



Write the letter name of each note on the line below.



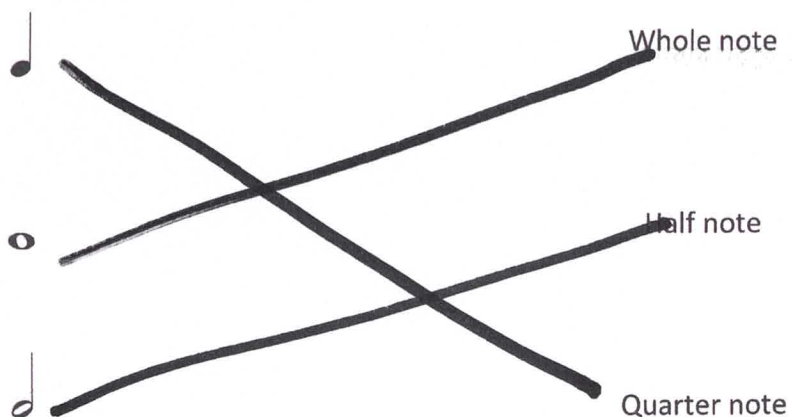
Complete the music alphabet.

A B C D E F G

TURN TO THE NEXT PAGE

2021 OMTA THEORY LEVEL ONE—VIOLIN

Draw a line from each note to its name.



In the time signature $\frac{3}{4}$ there are 3 beats in each measure.

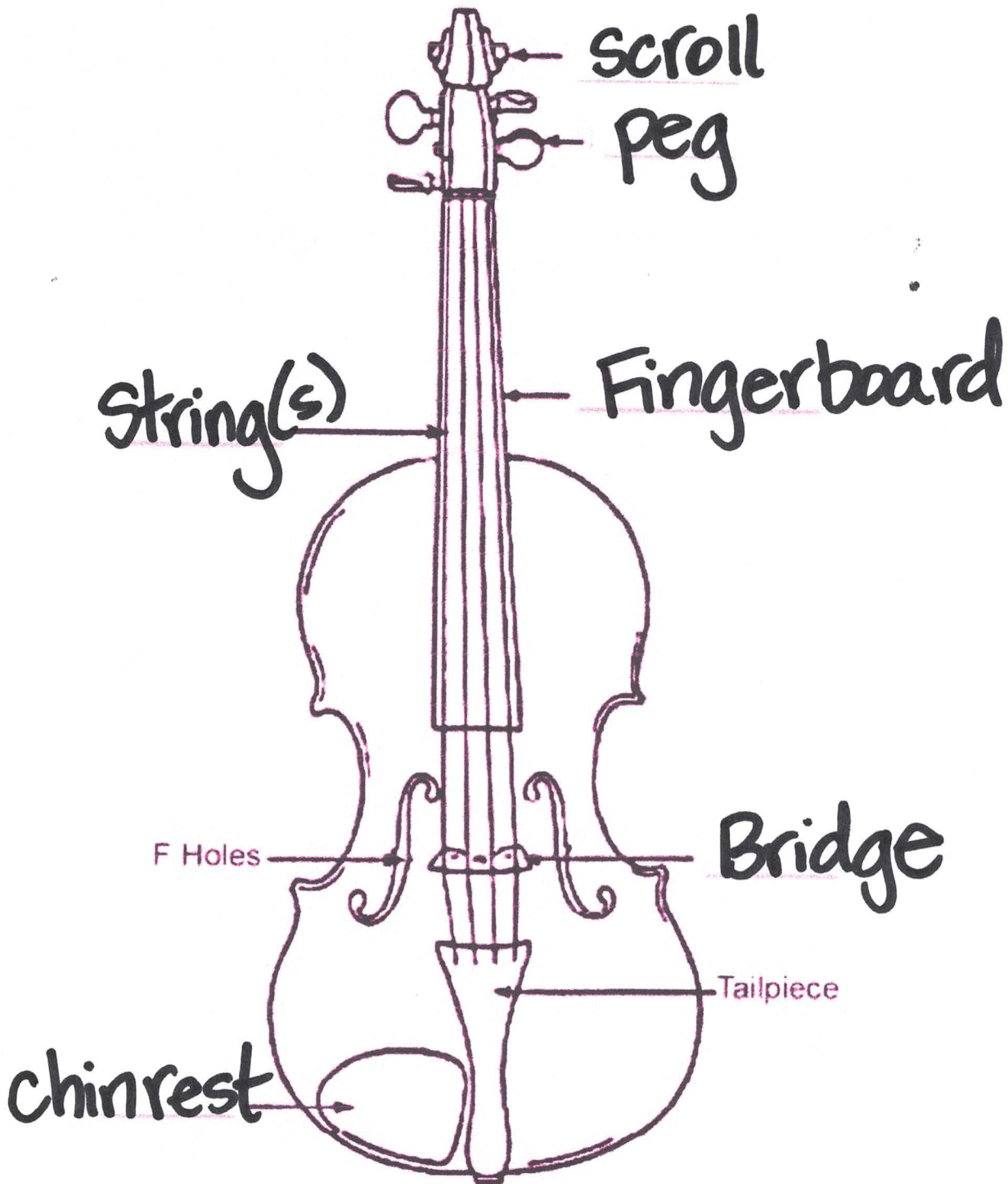
In the time signature $\frac{4}{4}$ there are 4 beats in each measure.

In the time signature $\frac{2}{4}$ the quarter note receives 1 beat(s).

TURN TO THE NEXT PAGE

2021 OMTA THEORY LEVEL ONE—VIOLIN

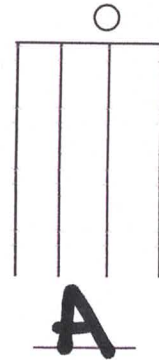
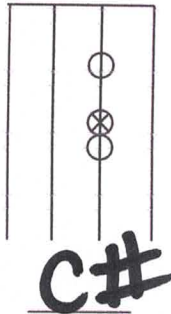
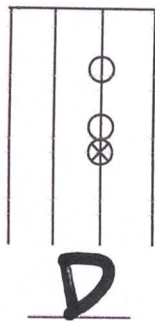
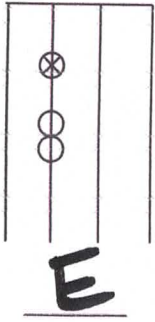
Label the parts of the violin marked below.



TURN TO THE NEXT PAGE

2021 OMTA THEORY LEVEL ONE—VIOLIN

What is the name of the note with the "X"?




2021 OMTA THEORY LEVEL ONE—PIANO

Match the **terms** with the **definitions**. Write the letter on the blank line.

TERMS

W double bar line

M repeat sign

Z 

O legato

P dynamics

Q staff

C up bow

T staccato

J *f*

A bar line

B measure

D *p*

H bow down

K slur

L time signature

DEFINITIONS

A. A line dividing the staff into measures

B. The space between two bar lines

C. 

D. Piano, soft

E. Two bar lines close together indicating the end of a piece of music

F. How loudly or softly to play music *p* *f*

G. Five lines and four spaces

H. 

I. A curved line over or under notes which means to play legato

J. Forte, loud

K. Two numbers placed on top of each other at the beginning of a piece of music. The top number tells how many beats in each measure. The bottom number tells what type of note receives the beat.

L. A dot placed above or below a note head indicating to play separated or disconnected

M. Play again

N. Treble clef, also know as G clef

O. Smoothly and connected

TURN TO THE NEXT PAGE

2021 OMTA THEORY LEVEL ONE—PIANO

Use the music example below to answer the following questions. **The measures are numbered.** Circle the correct answer.

What is the dynamic marking in measure 1?

Piano, soft

Forte, loud

Play again

What is the circled symbol in measure 2?

Down bow

Accent

Up bow

What kind of notes are in measure 2?

Quarter notes

Half notes

Whole notes

What do the dots indicate in measure 3?

Play short

Play long

Do not play

What is the circled symbol in measure 4?

Staccato

Staff

Repeat sign

END OF WRITTEN EXAM

★ Aural Test = 1 point each question

2021 OMTA AURAL AWARENESS LEVELS 1 & 2

Aural Score

Student's Name Key

1. High

Low

2. Forte, *f*

Piano, *p*

3. Same

Different

4. Higher

Lower

5. Legato

Staccato

6. Going higher

Going lower

7. Higher

Lower

8. Legato

Staccato

9. Higher

Lower

10. Higher

Lower

END OF AURAL AWARENESS EXAM