

2022 OMTA THEORY LEVEL ONE—PIANO

Student's Name _____

Written Score	90
Aural Score	10
TOTAL SCORE	100

Teacher's Name _____

Write the letter name of each note on the line below.

A musical staff with a treble clef and a bass clef. The notes are: F4 (treble clef, first space), A3 (bass clef, second space), E4 (treble clef, first space), and C3 (bass clef, first line).

 F A E C

A musical staff with a treble clef and a bass clef. The notes are: B4 (treble clef, second space), G3 (bass clef, second space), D4 (treble clef, second space), and D3 (bass clef, second space).

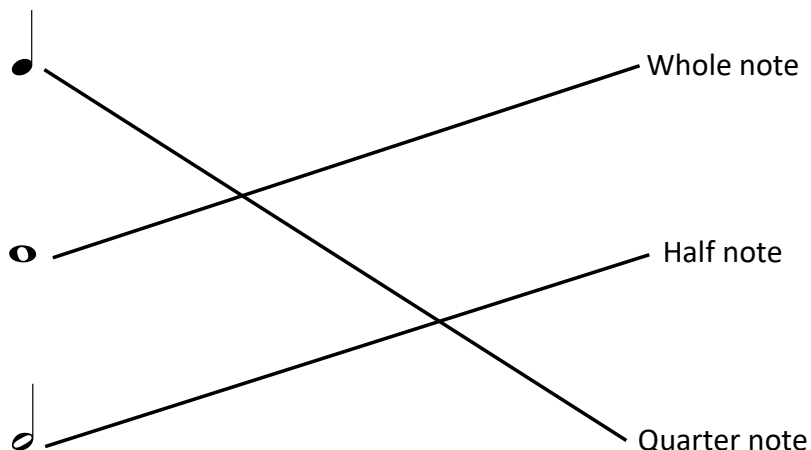
 B G D D

Complete the music alphabet.

A B C D E F G

2022 OMTA THEORY LEVEL ONE—PIANO

Draw a line from each note to its name.



In the time signature $\frac{3}{4}$, there are 3 beats in each measure.

In the time signature $\frac{4}{4}$, there are 4 beats in each measure.

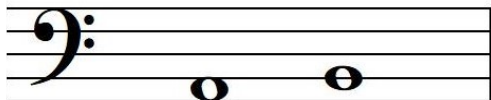
In the time signature $\frac{2}{4}$, there are 2 beats in each measure.

The 4 on the bottom of the time signatures $\frac{2}{4}$, $\frac{3}{4}$, and $\frac{4}{4}$ tells us that the quarter note receives 1 beat(s).

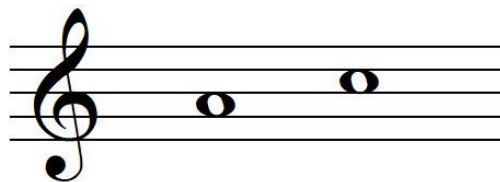
TURN TO THE NEXT PAGE

2022 OMTA THEORY LEVEL ONE—PIANO

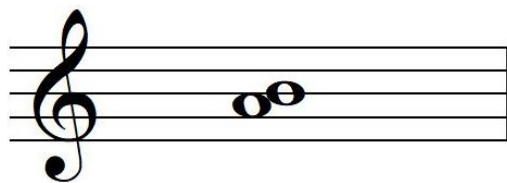
Do these notes step or skip?



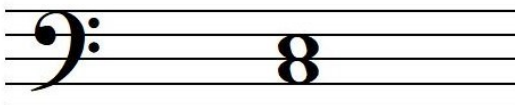
step



skip

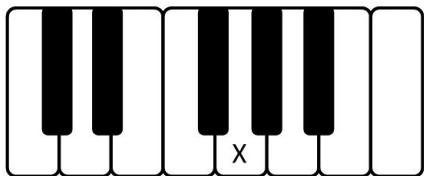


step

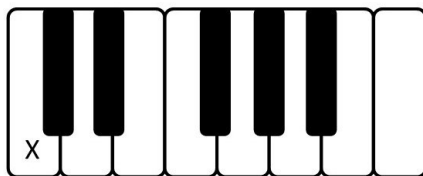


skip

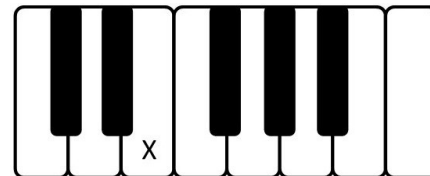
On the line below, write the letter name of the key marked on the keyboard.



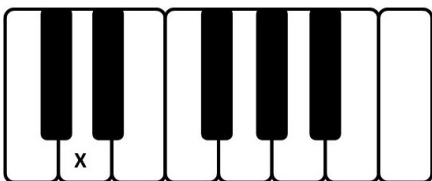
G



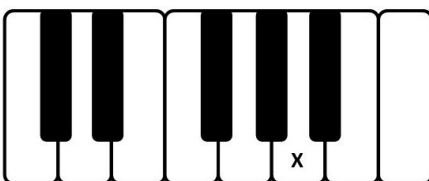
C



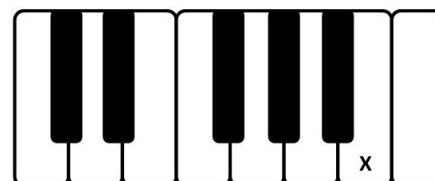
E



D



A



B

TURN TO THE NEXT PAGE

2022 OMTA THEORY LEVEL ONE—PIANO

Match the terms with the definitions. Write the letter of the correct definition on the blank line.

TERMS

_____ D *p*

_____ J repeat sign

_____ K 

_____ G step

_____ A bar line

_____ L skip

_____ C 

_____ I slur

_____ H *f*

_____ F dynamics

_____ B measure

_____ E double bar line

DEFINITIONS

A. A line dividing the staff into measures

B. The space between two bar lines

C. Bass clef, also known as F clef

D. Piano, soft

E. Two bar lines close together indicating the end of a piece of music

F. How loudly or softly to play music

G. From a line to a space, or a space to a line on the staff

H. Forte, loud

I. A curved line over or under a note which means to play legato

J. Two bar lines close together with two dots that means "play again"

K. Treble clef, also known as G clef

L. From a line to a line or a space to a space on the staff

TURN TO THE NEXT PAGE

2022 OMTA THEORY LEVEL ONE—PIANO

Use the music example below to answer the following questions. The measures are numbered. Circle the correct answer or fill in the blank for each question.

Which symbol is circled in measure 4?

Bar line

Double bar line

Repeat sign

What is the dynamic marking in measure 1?

Piano, soft

Forte, loud

Play again

How should the quarter notes in measure 3 be played?

Legato

Staccato

How many measures are in the music example? 4

The music example is written in which clef?

Treble

Bass

Are the two notes circled in measure 2 a step or a skip?

Step

Skip

2022 OMTA AURAL AWARENESS LEVELS 1 & 2

Aural Score

10

Student's Name _____

1. High

Low

2. Forte, *f*

Piano, *p*

3. Same

Different

4. Higher

Lower

5. Legato

Staccato

6. Going higher

Going lower

7. Higher

Lower

8. Legato

Staccato

9. Higher

Lower

10. Higher

Lower