

OMTA THEORY LEVEL THREE—CLARINET

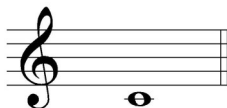
Student's Name _____

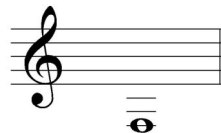
Teacher's Name _____

Written Score	
Aural Score	
TOTAL SCORE	

Write the letter name of each note on the line below.

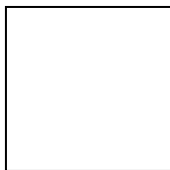




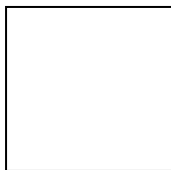


Draw the symbol in the box.

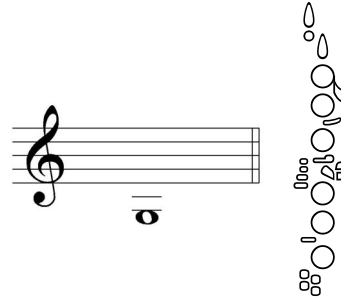
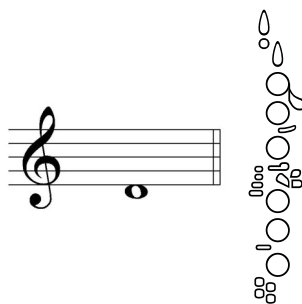
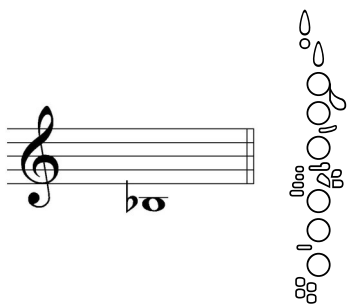
Flat sign



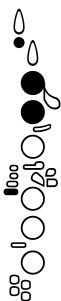
Sharp sign



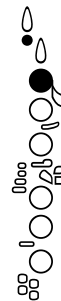
Identify the following notes. Beside the staff, fill in the fingerings on the clarinet.



Identify the note name from the fingering diagrams.



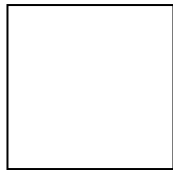




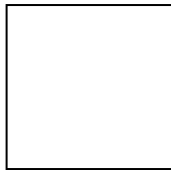
OMTA THEORY LEVEL THREE—CLARINET

Draw the symbol in the box.

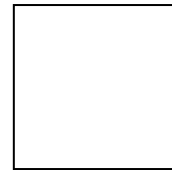
Quarter Note



Half Rest



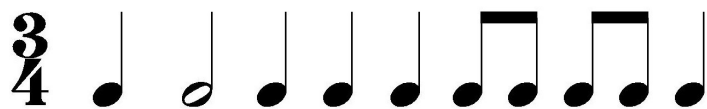
Two-eighth notes (beamed)



The time signature $\frac{4}{4}$ tells us there are _____ beats in each measure.

The time signature $\frac{4}{4}$ tells us the quarter note receives _____ beat(s).

Draw bar lines in the example. Include a double bar line.



TURN TO THE NEXT PAGE

OMTA THEORY LEVEL THREE—CLARINET

Identify the following key signatures.





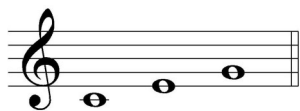
Circle the correct pattern of whole steps and half steps used in a Major scale.

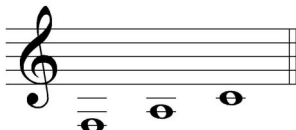
WHWWHWW

WWHWWWH

HWWWHWW

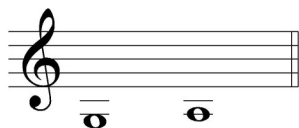
Identify the Major arpeggios.



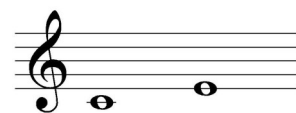




Identify the intervals as seconds or thirds.







TURN TO THE NEXT PAGE

OMTA THEORY LEVEL THREE—CLARINET

Match the symbols with the definitions. Write the letter on the blank line.

_____ ’

_____ b

_____ 

_____ 8^{va}

_____ 

_____ #

_____ ◡

- A. Slur—two or more notes of different pitch played on one breath with only the first note tongued
- B. When written above notes, it means to play the notes an octave higher. When written below notes, it means to play notes an octave lower.
- C. Crescendo—gradually louder
- D. An accidental that lowers the pitch one half step
- E. A marking that means to take a breath
- F. Sharps or flats in a specific order and pattern after a clef sign
- G. An accidental that raises the pitch one half step
- H. To hold a note or rest for extra value.

Use a word from the word list to complete each sentence.

Octave	Melodic Interval	Triad
Crescendo	Diminuendo	Natural Sign

An _____ is an interval of eight notes.

A _____ cancels a sharp or flat.

A _____ is the distance between two notes which are played separately creating a “melody”.

A _____ means to play gradually softer.

A _____ is a chord of three tones, consisting of a root, 3rd, and 5th above the root.

TURN TO THE NEXT PAGE

OMTA THEORY LEVEL THREE—CLARINET

Use the music example to answer the questions below. The measures are numbered.

The musical notation shows a melody in 4/4 time with a key signature of one flat (B-flat major). The melody is written on a single staff. Measure 1 begins with a piano (*p*) dynamic marking. Measure 2 contains a circled interval between the first two notes. Measure 3 features four arrows pointing to the notes, indicating a staccato articulation. Measure 4 concludes with a breath mark.

The time signature of this melody tells us there are _____ beats in the measure.

What key is the music example written in? Circle the answer.

C Major

F Major

G Major

How should the notes be played under the arrows in measure three? Circle the answer.

Staccato

Legato

What does the dynamic marking mean in measure one? Circle the answer.

Soft

Loud

What is the interval circled in measure two? Circle the answer.

Second

Third

In what measure is the breath mark? Circle the answer.

One

Two

Three

Four

END OF WRITTEN EXAM

OMTA AURAL AWARENESS LEVEL 3 & 4

Aural Score

Student's Name _____

- | | |
|---------------------|------------------|
| 1. Same | Different |
| 2. Staccato | Legato |
| 3. Higher | Lower |
| 4. Piano, <i>p</i> | Forte, <i>f</i> |
| 5. Legato | Staccato |
| 6. High | Low |
| 7. Higher | Lower |
| 8. Second | Third |
| 9. Gradually louder | Gradually softer |
| 10. Higher | Lower |

END OF AURAL AWARENESS EXAM