

★ Written Test = 2 points each question

## OMTA THEORY LEVEL ONE – PIANO

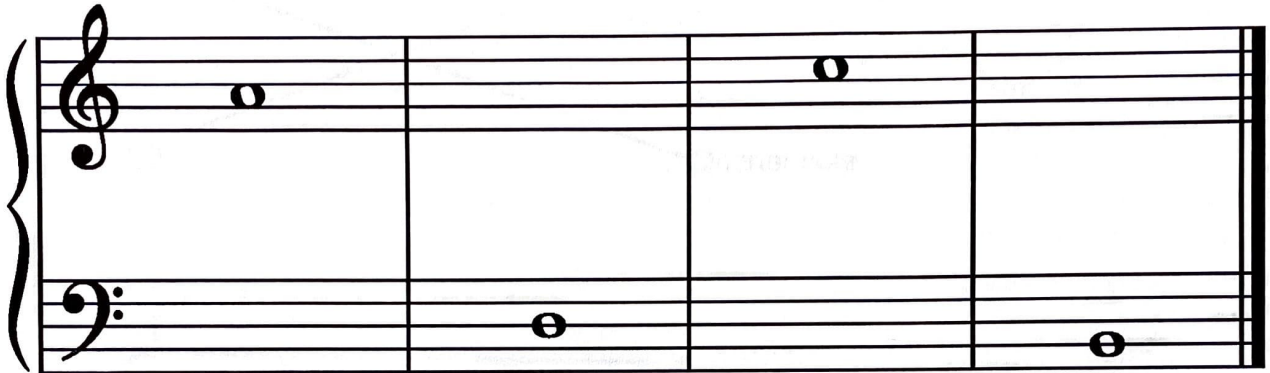
Student's Name Key

Teacher's Name \_\_\_\_\_

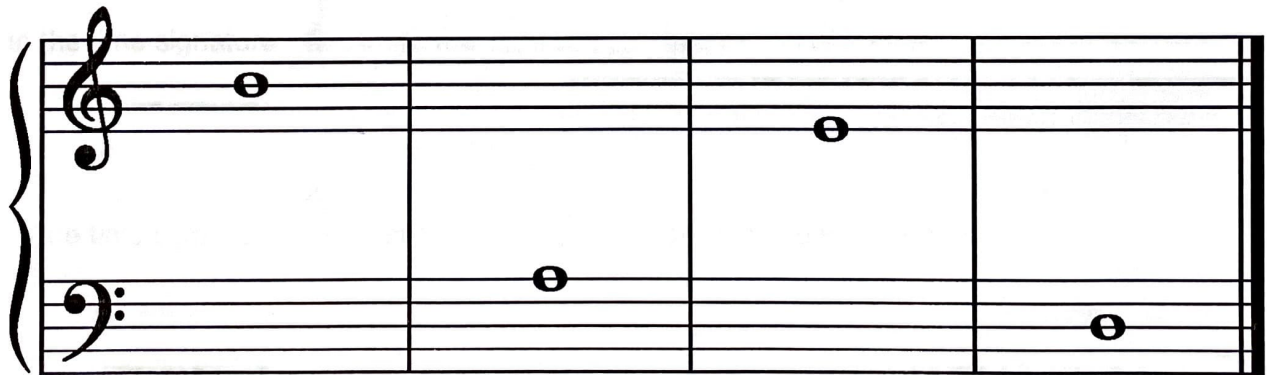
Written Score	90
Aural Score	10
<b>TOTAL SCORE</b>	<b>100</b>

Test code: Mozart

Write the letter name of each note on the line below.



A      D      C      B



B      A      E      D

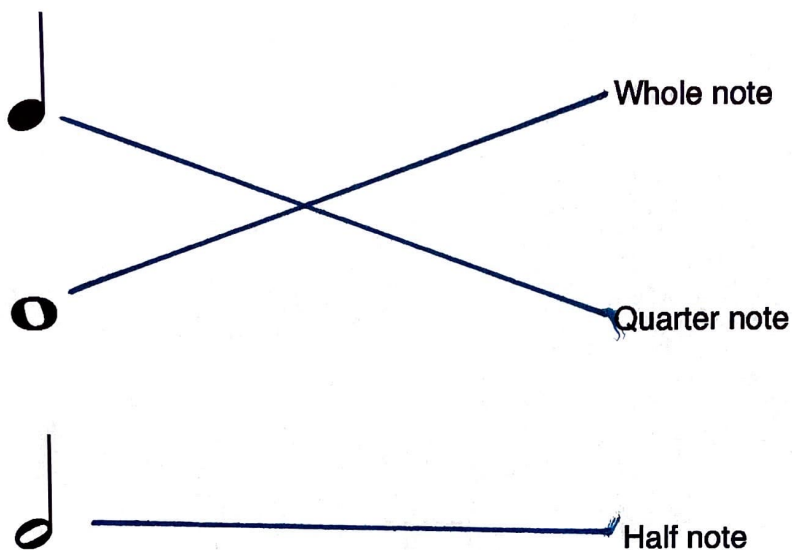
Complete the music alphabet. (2 pts.)

A B C D E F G

TURN TO THE NEXT PAGE

# OMTA THEORY LEVEL ONE — PIANO

Draw a line from each note to its name.



In the time signature  $\frac{3}{4}$ , there are 3 beat(s) in each measure.

In the time signature  $\frac{4}{4}$ , there are 4 beat(s) in each measure.

In the time signature  $\frac{2}{4}$ , there are 2 beat(s) in each measure.

The 4 on the bottom of the time signatures  $\frac{2}{4}$ ,  $\frac{3}{4}$ , and  $\frac{4}{4}$  tells us that the quarter note receives 1 beat(s).

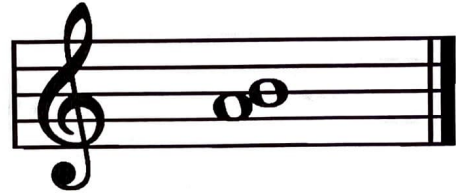
TURN TO THE NEXT PAGE

# OMTA THEORY LEVEL ONE – PIANO

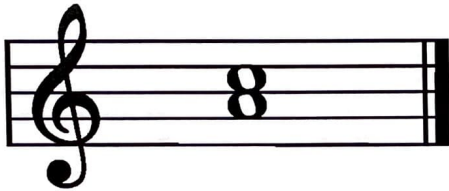
Do these notes step or skip?



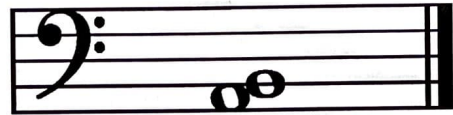
Skip



Step



Skip

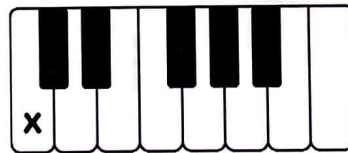


Step

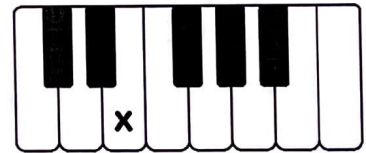
On the line below, write the letter name of the key marked on the keyboard.



G



C



E



A



B



D

TURN TO THE NEXT PAGE

# OMTA THEORY LEVEL ONE — PIANO

Match the terms with the definitions. Write the letter of the correct definition on the blank line.

## Terms

E double bar line

J repeat sign

K 

L legato

F dynamics

G staff

C 

I staccato

H *f*

A bar line

B measure

D *p*

## Definitions

A. A line dividing the staff into measures

B. The space between two bar lines

C. Bass clef, also known as F clef

D. Piano, soft

E. Two bar lines close together indicating the end of a piece of music

F. How loudly or softly to play music

G. Five lines and four spaces

H. Forte, loud

I. A dot placed above or below a note head indicating to play separated or disconnected

J. Two bar lines close together with two dots that means "play again"

K. Treble clef, also known as G clef

L. To play smoothly, connected

TURN TO THE NEXT PAGE

# OMTA THEORY LEVEL ONE – PIANO

Use the music example below to answer the following questions. The measures are numbered. Circle the correct answer or fill in the blank for each question.

1 2 3 4

Which symbol is circled in measure 4?

Bar line

Double bar line

Repeat sign

What is the dynamic marking in measure 1?

Piano, soft

Forte, loud

Play again

How should the quarter notes in measure 3 be played?

Legato

Staccato

How many measures are in the music example? 4

The music example is written in which clef?

Treble clef

Bass clef

Are the two notes circled in measure 2 a step or a skip?

Step

Skip

END OF WRITTEN EXAM

\* Aural Test - Each question is worth one point

## OMTA AURAL AWARENESS LEVELS 1 & 2

Aural Score

10

Student's Name \_\_\_\_\_

1. High Low
2. Forte *f* Piano *p*
3. Same Different
4. Higher Lower
5. Legato Staccato
6. Going higher Going lower
7. Higher Lower
8. Legato Staccato
9. Higher Lower
10. Higher Lower

END OF AURAL AWARENESS EXAM