

OMTA THEORY LEVEL ONE – PIANO

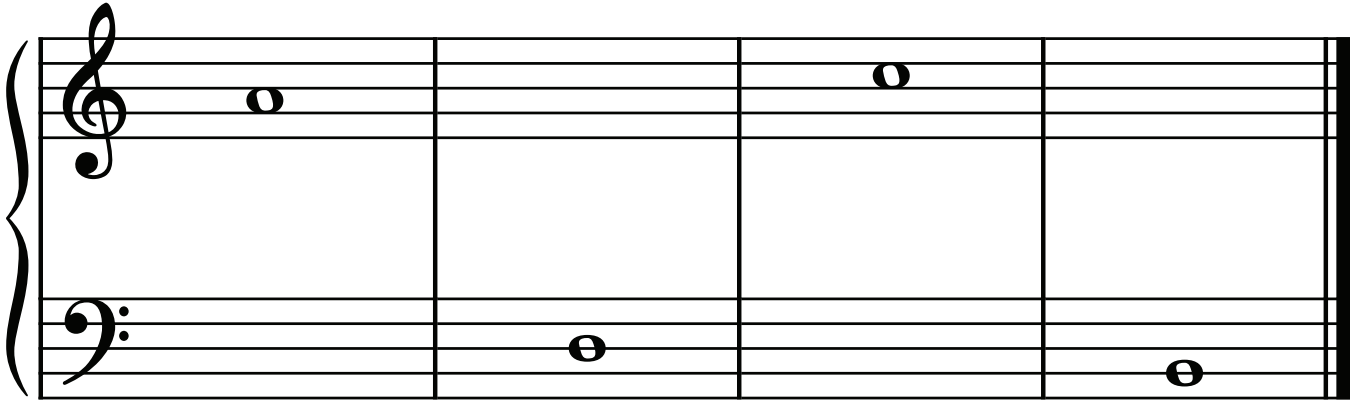
Student's Name _____

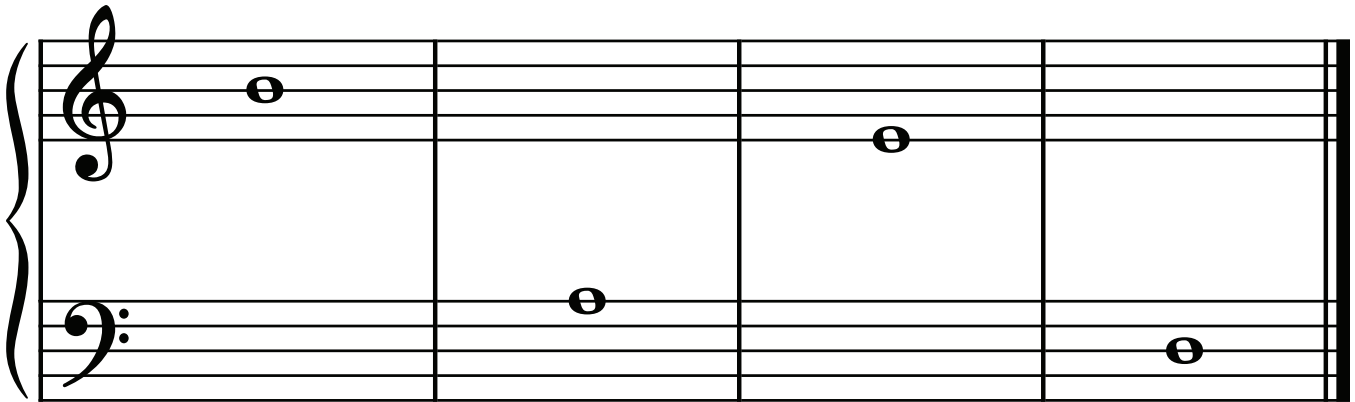
Teacher's Name _____

Written Score	
Aural Score	
TOTAL SCORE	

Test code: Mozart

Write the letter name of each note on the line below.





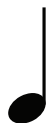
Complete the music alphabet.

A B _____ D _____ F G

TURN TO THE NEXT PAGE

OMTA THEORY LEVEL ONE — PIANO

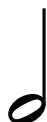
Draw a line from each note to its name.



Whole note



Quarter note



Half note

In the time signature $\frac{3}{4}$, there are _____ beat(s) in each measure.

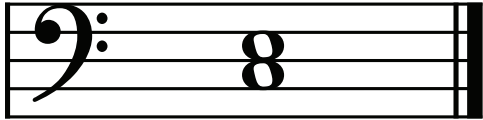
In the time signature $\frac{4}{4}$, there are _____ beat(s) in each measure.

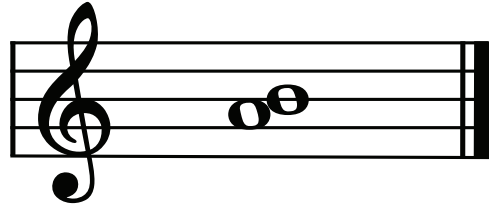
In the time signature $\frac{2}{4}$, there are _____ beat(s) in each measure.

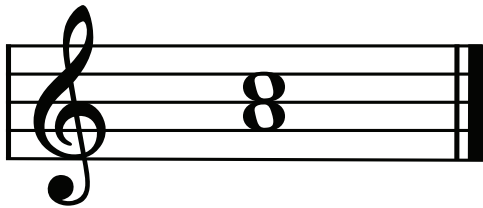
The 4 on the bottom of the time signatures $\frac{2}{4}$, $\frac{3}{4}$, and $\frac{4}{4}$ tells us that the quarter note receives _____ beat(s).

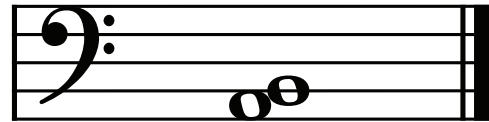
OMTA THEORY LEVEL ONE — PIANO

Do these notes step or skip?

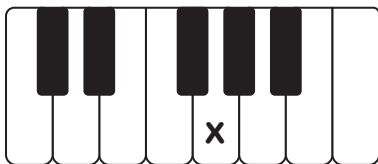








On the line below, write the letter name of the key marked on the keyboard.













TURN TO THE NEXT PAGE


OMTA THEORY LEVEL ONE — PIANO

Match the terms with the definitions. Write the letter of the correct definition on the blank line.

Terms

_____ double bar line

_____ repeat sign

_____ 

_____ legato

_____ dynamics

_____ staff

_____ 

_____ staccato

_____ *f*

_____ bar line

_____ measure

_____ *p*

Definitions

A. A line dividing the staff into measures

B. The space between two bar lines

C. Bass clef, also known as F clef

D. Piano, soft

E. Two bar lines close together indicating the end of a piece of music

F. How loudly or softly to play music

G. Five lines and four spaces

H. Forte, loud

I. A dot placed above or below a note head indicating to play separated or disconnected

J. Two bar lines close together with two dots that means “play again”

K. Treble clef, also known as G clef

L. To play smoothly, connected

OMTA THEORY LEVEL ONE – PIANO

Use the music example below to answer the following questions. The measures are numbered. Circle the correct answer or fill in the blank for each question.

1 2 3 4

Which symbol is circled in measure 4?

Bar line

Double bar line

Repeat sign

What is the dynamic marking in measure 1?

Piano, soft

Forte, loud

Play again

How should the quarter notes in measure 3 be played?

Legato

Staccato

How many measures are in the music example? _____

The music example is written in which clef?

Treble clef

Bass clef

Are the two notes circled in measure 2 a step or a skip?

Step

Skip

OMTA AURAL AWARENESS LEVELS 1 & 2

Aural Score

Student's Name _____

1. High Low
2. Forte *f* Piano *p*
3. Same Different
4. Higher Lower
5. Legato Staccato
6. Going higher Going lower
7. Higher Lower
8. Legato Staccato
9. Higher Lower
10. Higher Lower