

* Written Test - Each question is worth two points.

OMTA THEORY LEVEL TWO — PIANO

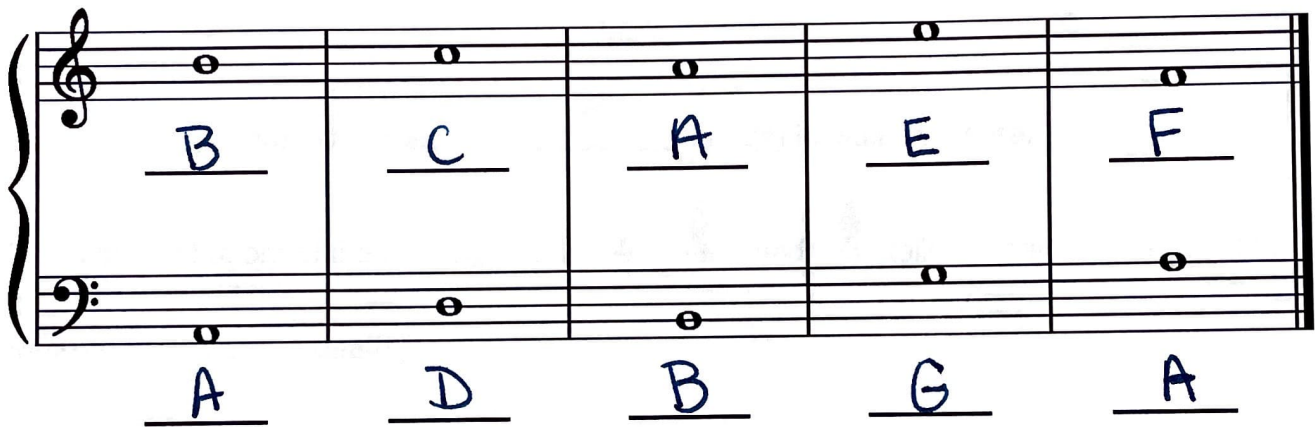
Student's Name Key

Teacher's Name _____

Written Score	90
Aural Score	10
TOTAL SCORE	100

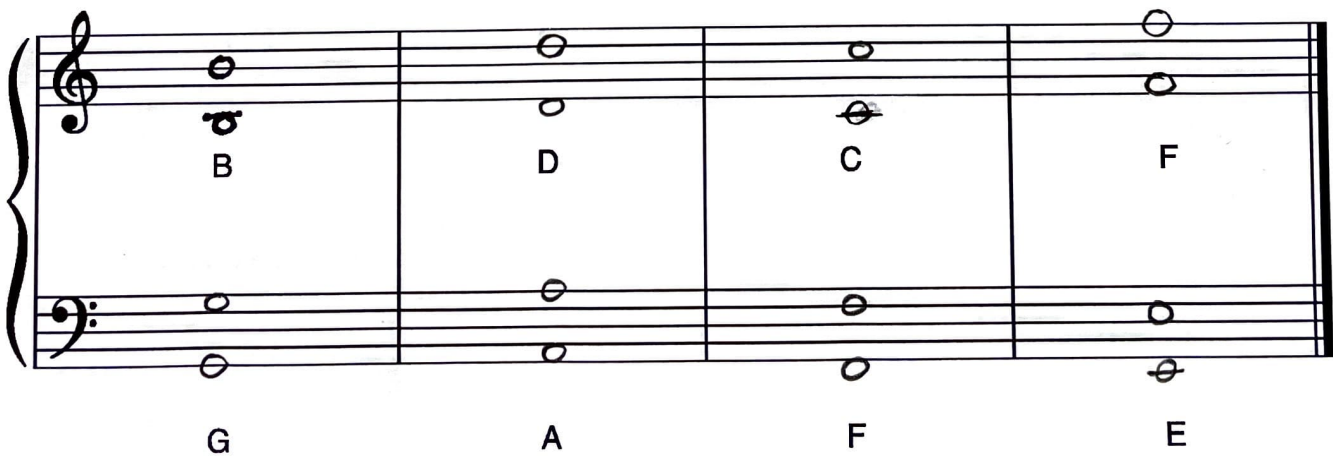
Test code: Mozart

Write the letter name of each note on the line below.



A musical staff with five measures. The top staff (treble clef) contains whole notes with handwritten letter names: B, C, A, E, F. The bottom staff (bass clef) contains whole notes with handwritten letter names: A, D, B, G, A.

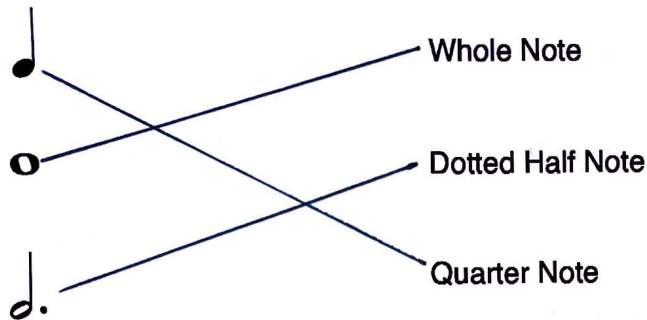
Draw the notes on the staff. Use whole notes.



A musical staff with five measures. The top staff (treble clef) contains whole notes with letter names: B, D, C, F. The bottom staff (bass clef) contains whole notes with letter names: G, A, F, E.

OMTA THEORY LEVEL TWO – PIANO

Draw a line from each note to its name.



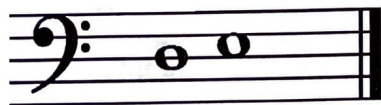
In the time signature $\frac{3}{4}$, there are 3 beat(s) in each measure.

The 4 on the bottom of the time signatures $\frac{2}{4}$, $\frac{3}{4}$, and $\frac{4}{4}$ tells us that the quarter note receives 1 beat(s).

Circle the correct time signature for each music example.



Do these notes step or skip?



Step

TURN TO THE NEXT PAGE

OMTA THEORY LEVEL TWO – PIANO

Match the terms with the definitions. Write the letter of the correct definition on the blank line.

TERMS

F ritardando, ritard, or rit.

B whole step

E dynamics

A legato

C interval

D half step

DEFINITIONS

A. To play smoothly, connected

B. Equal to two half steps

C. The distance between two notes

D. The closest distance between two notes

E. How loudly or softly to play music

F. To play gradually slower

Use a word from the word list to complete each sentence.

WORD LIST

mp
sharp
tempo

treble clef
mf
flat


A sign that lowers a note one half step is a Flat

Medium or moderately soft is mp

A sign that raises a note one half step is a Sharp

Medium or moderately loud is mf

The speed of a music composition is the tempo

 is the symbol for the treble clef

TURN TO THE NEXT PAGE

OMTA THEORY LEVEL TWO – PIANO

Use the music example below to answer the following questions. The measures are numbered. Circle the correct answer or fill in the blank for each question.

1 *mf* 2 3 *ritardando* 4

The time signature for the music example indicates there are 4 beats in each measure.

The music example is written in which clef?

Treble clef

Bass clef

What is the definition of the dynamic marking below measure 1?

Loud

Medium soft

Medium loud

What is the interval between the notes circled in measure 1?

Step

Skip

What is the accidental circled in measure 3?

Sharp

Flat

What is the definition of the change in tempo marking above measure 3?

To play smooth and connected

To play gradually slower

What is the interval between the notes circled in measure 3?

Step

Skip

END OF WRITTEN EXAM

★ Aural Test = 1 point each question

OMTA AURAL AWARENESS LEVELS 1 & 2

Student's Name Key

Aural Score
10

1. High Low
2. Forte *f* Piano *p*
3. Same Different
4. Higher Lower
5. Legato Staccato
6. Going higher Going lower
7. Higher Lower
8. Legato Staccato
9. Higher Lower
10. Higher Lower