

OMTA THEORY LEVEL THREE—PIANO

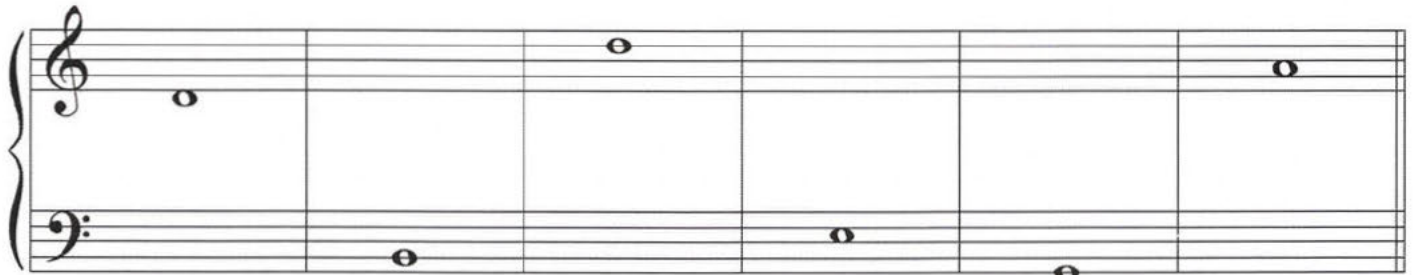
Student's Name Key

Teacher's Name _____

Written Score	90
Aural Score	10
TOTAL SCORE	100

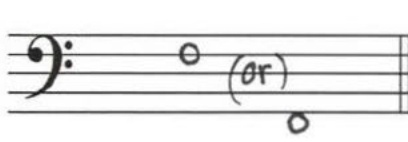
Test code: Mozart

Write the letter name of each note on the line below.



D B D E G A

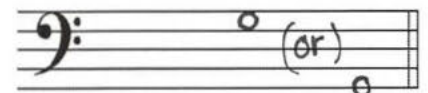
Draw the notes on the staff. Use whole notes.



F



C



G

Label the Major key signatures.



C Major
(c)



F Major
(f)

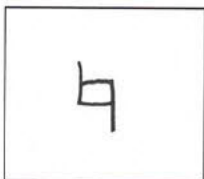


G Major
(g)

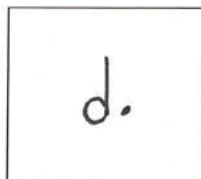
OMTA THEORY LEVEL THREE—PIANO

Draw the correct answer in the box.

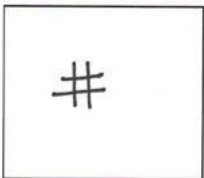
Natural sign



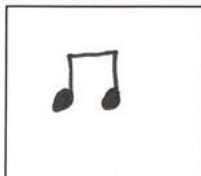
Dotted half note



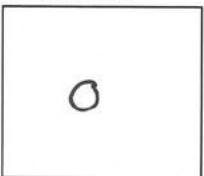
Sharp



Two eighth notes beamed



Whole note



Quarter note



Whole rest



Circle the correct time signature for each music example.



TURN TO THE NEXT PAGE

OMTA THEORY LEVEL THREE—PIANO

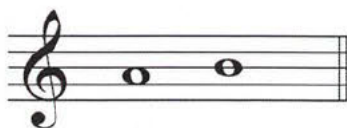
Circle the correct pattern of whole steps and half steps used in a Major scale.

WWHWWWH

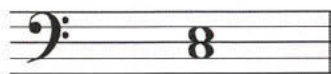
WHWWWHW

WWHHWWH

Label the intervals as a second (2nd) or third (3rd).



second (2nd)



third (3rd)

Use a word from the word list to complete each sentence.

WORD LIST

harmonic interval	crescendo
natural	fermata
triad	ritardando

A natural _____ cancels a sharp or a flat.

is the symbol for fermata _____, which means to hold a note or rest for extra value.

A harmonic interval _____ is the distance between two notes which are played together, creating harmony.


A triad _____ is a chord of three notes, consisting of a root, 3rd, and 5th above the root.

TURN TO THE NEXT PAGE

OMTA THEORY LEVEL THREE—PIANO

Match the terms with the definitions. Write the letter of the correct definition on the blank line.

TERMS

C crescendo (cresc. )

F key signature

E fermata

A natural

D ritardando (rit.)

B half step

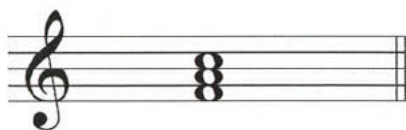
G root

H whole step

DEFINITIONS

- A. Cancels a sharp or a flat
- B. The closest distance between two notes
- C. To play gradually louder
- D. To play gradually slower
- E. To hold a note or rest for extra value
- F. Sharps or flats in a specific order and pattern after a clef sign
- G. The note in any chord that gives the chord its name
- H. Equal to two half steps

Name the Major triads.



F Major
(f)



G Major
(g)

TURN TO THE NEXT PAGE

OMTA THEORY LEVEL THREE—PIANO

Use the music example below to answer the following questions. The measures are numbered. Circle the correct answer or fill in the blank for each question.

The time signature for the music example indicates there are 4 beats in each measure.

What is the meaning of the sign circled in measure 5?

The end

To play again

What is the definition of the dynamic marking below measure 1?

Loud

Soft

Medium loud

Medium soft

The music example is written in which clef?

Treble Clef

Bass Clef

How should the notes in measures 1 and 2 be played?

Legato

Staccato

What is the interval circled in measure 2?

2nd

3rd

The dots in measure 3 indicate to play the music legato or staccato?

Legato

Staccato

TURN TO THE NEXT PAGE

★ Aural Test = 1 point each question

OMTA AURAL AWARENESS LEVELS 3 & 4

Aural Score

Student's Name Key

1. Same

Different

2. Staccato

Legato

3. Higher

Lower

4. Piano, *p*

Forte, *f*

5. Legato

Staccato

6. High

Low

7. Higher

Lower

8. Second

Third

9. Gradually louder

Gradually softer

10. Higher

Lower