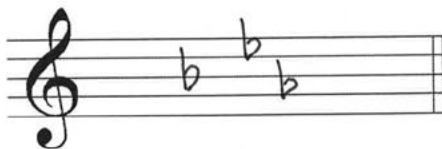


OMTA THEORY LEVEL SEVEN—PIANO

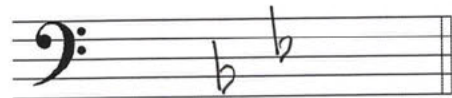
Draw the key signatures.



f# minor

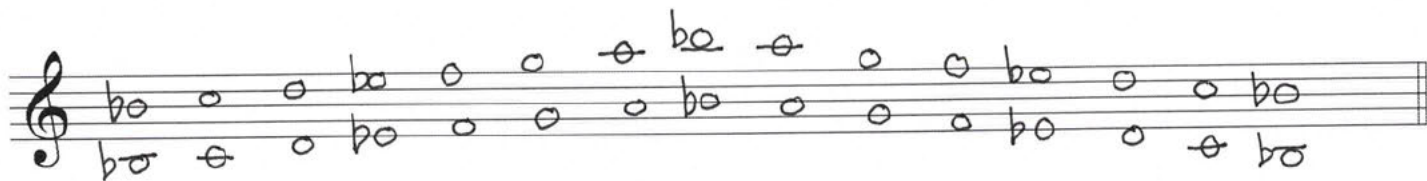


Eb Major

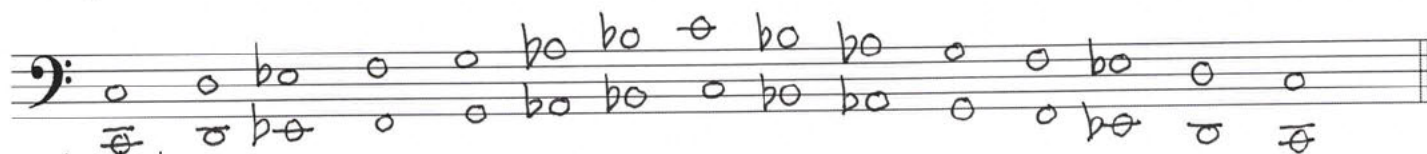


g minor

Draw the scales one octave ascending and descending using whole notes. Use accidentals as needed in both directions. Do not use a key signature.

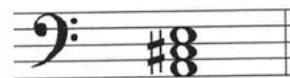
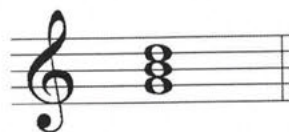
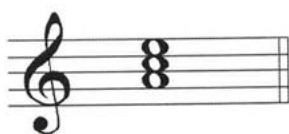


Bb Major



c natural minor

On the blank line, write the root of the triads and circle whether the triads are Major or minor.



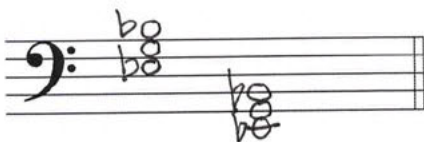
a Major
(A) minor

b Major
(B) minor

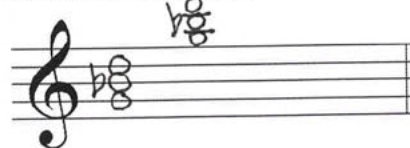
G Major
(g) minor

A Major
(a) minor

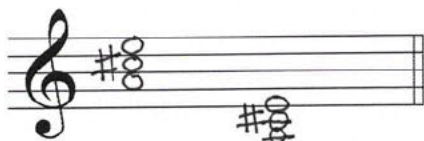
Draw the triads in root position using whole notes. Use accidentals as needed.



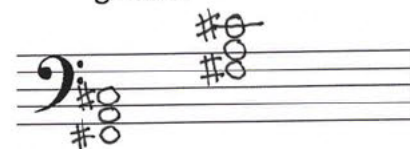
E-flat Major



g minor



A Major

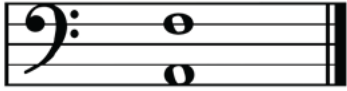


f-sharp minor

TURN TO THE NEXT PAGE

OMTA THEORY LEVEL SEVEN—PIANO

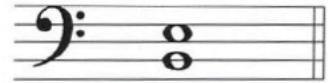
Circle the correct answer.



Perfect 5th
 minor 6th
 Major 6th

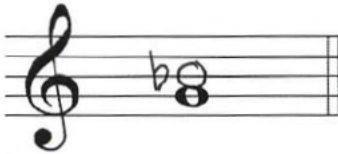


Perfect 4th
 Perfect 5th
 Major 6th

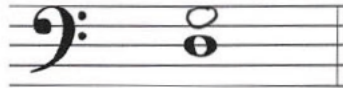


Perfect 4th
 Perfect 5th
 minor 6th

Draw the interval above each note using a whole note. Use accidentals as needed.



minor 3rd



Perfect 4th



Major 6th

Match the terms with the definitions. Write the letter of the correct definition on the blank line.

TERMS

- H lento
E subito
I phrase
G con moto
F perfect intervals
D allargando (allarg.)
A cantabile
C presto
B fortepiano, *fp*

DEFINITIONS

- A. In a singing style
 B. Loud followed immediately by soft
 C. A very fast tempo, faster than allegro
 D. Broadening or slowing
 E. Suddenly
 F. Unison, 4th, 5th, and octave
 G. With motion
 H. A slow tempo
 I. A musical idea similar to a sentence

TURN TO THE NEXT PAGE

OMTA THEORY LEVEL SEVEN—PIANO

Use the music example below to answer the following questions. The measures are numbered. Circle the correct answer or fill in the blank for each question.

Adagio

The example is in the key of d minor. Include Major or minor in the answer.
(D)

What should be the time signature for this piece?

6
8

3
4

4
4

What is the meaning of *marcato* in measure 1?

Sweetly

Marked, emphasized

Tranquil, in a quiet style

What is the meaning of *accel.* in measure 3?

To play gradually slower

To play gradually louder

To play gradually faster

Which type of scale is circled in measure 4?

Major

natural minor

harmonic minor

END OF WRITTEN EXAM

★ Aural Test = 1 point each question

OMTA AURAL AWARENESS LEVELS 7 & 8

Aural Score

Student's Name Key

1. natural minor harmonic minor melodic minor

2. natural minor harmonic minor melodic minor

3. Presto Lento Moderato

4. $\frac{4}{4}$ $\frac{6}{8}$

5. Perfect 4th Perfect 5th Major 6th

6. 

7. Major minor

8. 

9. 

10. Interval 1 Interval 2