

# Theory Level 1 – Note Naming Set 1

Write the letter name of each note on the line below.

A musical staff with a grand staff (treble and bass clefs). The notes are: Treble clef, second line (D); Bass clef, first space (F); Treble clef, second space (E); Bass clef, second space (G).

\_\_\_\_\_

A musical staff with a grand staff (treble and bass clefs). The notes are: Treble clef, first space (D); Bass clef, second space (E); Treble clef, third space (F); Bass clef, third space (A).

\_\_\_\_\_

A musical staff with a grand staff (treble and bass clefs). The notes are: Treble clef, second space (E); Bass clef, second space (G); Treble clef, third space (F); Bass clef, third space (A).

\_\_\_\_\_

# Theory Level 1 – Note Naming Set 2

Write the letter name of each note on the line below.

A musical staff with a grand staff (treble and bass clefs). The notes are: Treble clef, second line (D); Bass clef, first space (F); Treble clef, second space (E); Bass clef, second space (G).

\_\_\_\_\_

A musical staff with a grand staff (treble and bass clefs). The notes are: Treble clef, first space (F); Bass clef, second space (G); Treble clef, second space (E); Bass clef, first space (F).

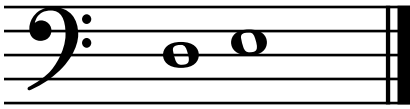
\_\_\_\_\_

A musical staff with a grand staff (treble and bass clefs). The notes are: Treble clef, second space (E); Bass clef, first space (F); Treble clef, second line (D); Bass clef, second space (G).

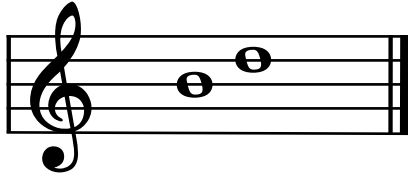
\_\_\_\_\_

# Theory Level 1 – Steps and Skips

Is each set of notes a step or a skip?



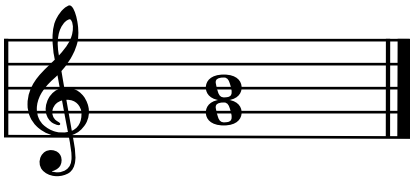
\_\_\_\_\_



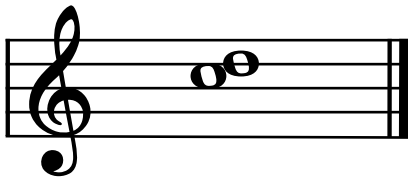
\_\_\_\_\_



\_\_\_\_\_



\_\_\_\_\_



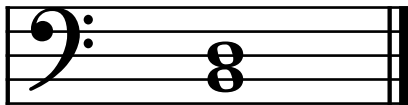
\_\_\_\_\_



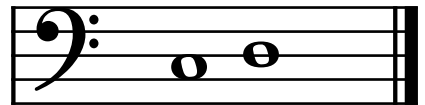
\_\_\_\_\_



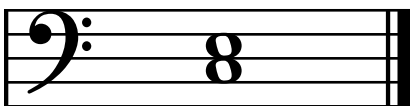
\_\_\_\_\_



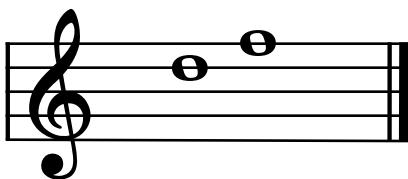
\_\_\_\_\_



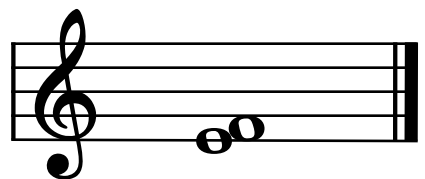
\_\_\_\_\_



\_\_\_\_\_



\_\_\_\_\_



\_\_\_\_\_

# Theory Level 1 – Keyboard Note Naming

On the line below, write the letter name of each key marked on the keyboard.



\_\_\_\_\_

\_\_\_\_\_

\_\_\_\_\_

\_\_\_\_\_



\_\_\_\_\_

\_\_\_\_\_

\_\_\_\_\_

\_\_\_\_\_



\_\_\_\_\_

\_\_\_\_\_

\_\_\_\_\_

\_\_\_\_\_



\_\_\_\_\_

\_\_\_\_\_

\_\_\_\_\_

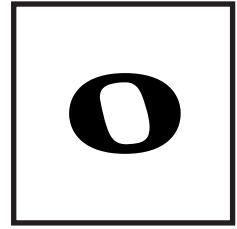
\_\_\_\_\_

# Theory Level 1 – Music Symbol Identification

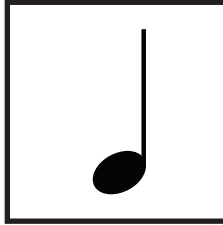
Draw a line from the music symbol to its name.



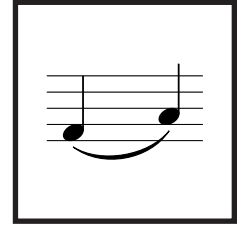
Staccato



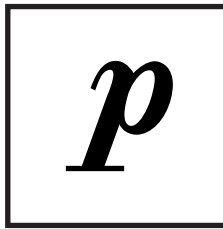
Quarter note



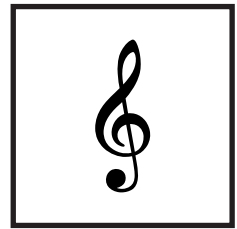
Piano



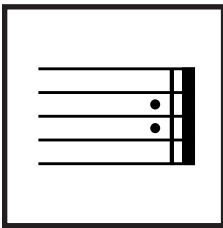
Slur



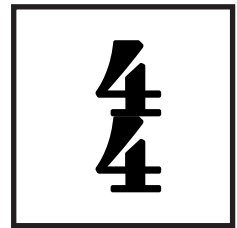
Repeat sign



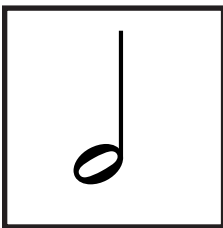
Treble clef



Time signature



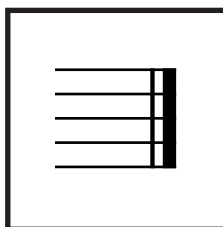
Whole note



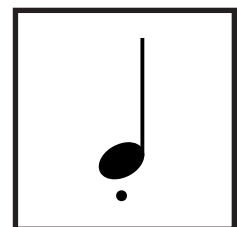
Forte



Double Bar Line



Bass clef



Half note