

Theory Level 2 – Note Naming Set 1

Write the letter name of each note on the line below.

A musical staff with a treble clef and a bass clef. The treble clef staff contains five whole notes: G4, A4, B4, C5, and D5. The bass clef staff contains five whole notes: G3, A3, B3, C4, and D4. Below each measure, there is a horizontal line for writing the letter name of the note.

A musical staff with a treble clef and a bass clef. The treble clef staff contains five whole notes: E4, F4, G4, A4, and B4. The bass clef staff contains five whole notes: E3, F3, G3, A3, and B3. Below each measure, there is a horizontal line for writing the letter name of the note.

A musical staff with a treble clef and a bass clef. The treble clef staff contains five whole notes: C5, D5, E5, F5, and G5. The bass clef staff contains five whole notes: C4, D4, E4, F4, and G4. Below each measure, there is a horizontal line for writing the letter name of the note.

Theory Level 2 – Note Naming Set 2

Write the letter name of each note on the line below.

A musical staff with a treble clef and a bass clef. The treble clef staff contains five whole notes: G4, A4, B4, C5, and D5. The bass clef staff contains five whole notes: G2, A2, B2, C3, and D3. Below each measure, there is a horizontal line for writing the letter name of the note.

A musical staff with a treble clef and a bass clef. The treble clef staff contains five whole notes: E4, F4, G4, A4, and B4. The bass clef staff contains five whole notes: E2, F2, G2, A2, and B2. Below each measure, there is a horizontal line for writing the letter name of the note.

A musical staff with a treble clef and a bass clef. The treble clef staff contains five whole notes: C5, D5, E5, F5, and G5. The bass clef staff contains five whole notes: C3, D3, E3, F3, and G3. Below each measure, there is a horizontal line for writing the letter name of the note.

Theory Level 2 – Note Writing

Draw one note on the staff for each of the notes below. Use whole notes.

A musical staff with five measures. The top staff has a treble clef and the bottom staff has a bass clef. The notes to be written are: A, F, D, Middle C, and B.

F G A C D

A musical staff with five measures. The top staff has a treble clef and the bottom staff has a bass clef. The notes to be written are: A, D, C, B, and Middle C.

E Middle C B G F

A musical staff with five measures. The top staff has a treble clef and the bottom staff has a bass clef. The notes to be written are: B, G, F, E, and G.

A C E Middle C D

Theory Level 2 – Time Signatures

In the time signature $\frac{2}{4}$, there are _____ beat(s) in each measure.

In the time signature $\frac{3}{4}$, there are _____ beat(s) in each measure.


In the time signature $\frac{4}{4}$, there are _____ beat(s) in each measure.


The 4 on the bottom of the time signatures $\frac{2}{4}$, $\frac{3}{4}$, and $\frac{4}{4}$ tells us that the quarter note receives _____ beat(s).


Circle the correct time signature for each music example.

$\frac{2}{4}$ $\frac{3}{4}$ $\frac{4}{4}$ 

$\frac{2}{4}$ $\frac{3}{4}$ $\frac{4}{4}$ 

$\frac{2}{4}$ $\frac{3}{4}$ $\frac{4}{4}$ 

$\frac{2}{4}$ $\frac{3}{4}$ $\frac{4}{4}$ 

$\frac{2}{4}$ $\frac{3}{4}$ $\frac{4}{4}$ 

Theory Level 2 – Music Symbol Identification

Using the word list, write the name of each music symbol on the lines below.

Word List

forte
repeat sign
bass clef
mezzo forte

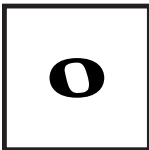
double bar line
sharp
dotted half note
quarter note
whole note

mezzo piano
half note
time signature
staccato
slur

piano
treble clef
ritard
flat

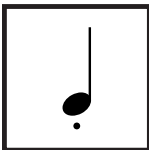




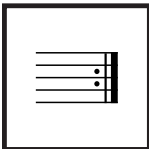






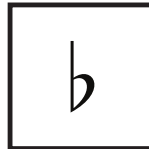


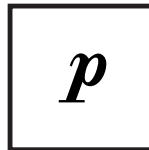


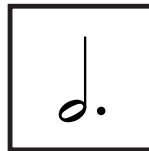




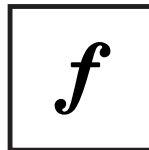


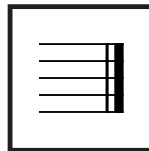


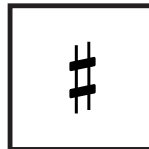


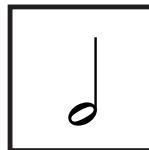












Theory Level 2 – Terms and Definitions

This set includes a review of terms from level 1. Match the terms with the definitions.

Write the letter of the correct definition on the blank line.

- | | |
|------------------------------|---|
| _____ bass clef | A. Also known as F clef; most music written below Middle C is notated in this clef (low) |
| _____ bar line | B. Also known as G clef; most music written above Middle C is notated in this clef (high) |
| _____ treble clef | C. A line dividing the staff into measures |
| _____ measure | D. Two numbers, one placed on top of the other, at the beginning of a piece of music |
| _____ staff | E. Medium or moderately loud |
| _____ forte | F. To play gradually slower |
| _____ piano | G. Raises a note one half step |
| _____ legato | H. To play smoothly, connected |
| _____ mezzo forte | I. A curved line over or under notes which means to play legato |
| _____ ritardando | J. A dot placed above or below a notehead telling us to play separated or disconnected |
| _____ tempo | K. The speed of a music composition |
| _____ mezzo piano | L. The closest distance between two notes, can be represented as “H” |
| _____ time signature | M. The distance between two notes |
| _____ dynamics | N. Lowers a note one half step |
| _____ slur | O. Medium or moderately soft |
| _____ sharp | P. Equal to two half steps, can be represented as “W” |
| _____ interval | Q. Two bar lines close together at the end of a piece of music |
| _____ half step | R. The space between two bar lines |
| _____ flat | S. Five lines and four spaces |
| _____ repeat sign | T. Soft |
| _____ whole step | U. Loud |
| _____ double bar line | V. Two bar lines close together with two dots meaning to “play again” |
| _____ staccato | W. How loudly or softly to play music |