

Theory Level 3 – Note Naming Review

Write the letter name of each note on the line below.

A musical staff with a grand staff (treble and bass clefs) containing five measures. The notes are: Treble clef (G4, A4, B4, C5, D5); Bass clef (G3, A3, B3, C4, D4).

A musical staff with a grand staff (treble and bass clefs) containing five measures. The notes are: Treble clef (G4, A4, B4, C5, D5); Bass clef (G3, A3, B3, C4, D4).

A musical staff with a grand staff (treble and bass clefs) containing five measures. The notes are: Treble clef (G4, A4, B4, C5, D5); Bass clef (G3, A3, B3, C4, D4).

Theory Level 3 – Key Signature Identification

Write the name of the Major key shown by each key signature.



_____ Major



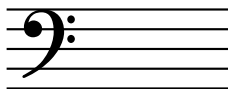
_____ Major



_____ Major



_____ Major



_____ Major



_____ Major



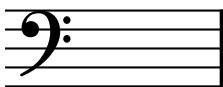
_____ Major



_____ Major



_____ Major



_____ Major



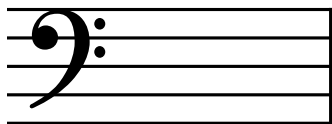
_____ Major



_____ Major

Theory Level 3 – Key Signature Writing

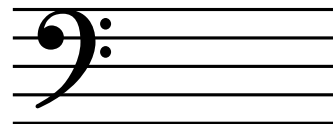
Draw the correct key signature for each Major key.



F Major



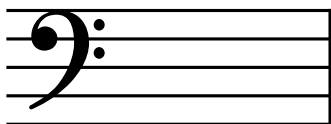
G Major



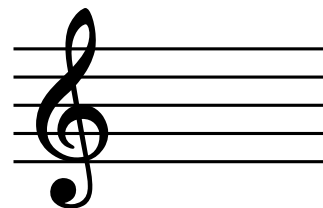
C Major



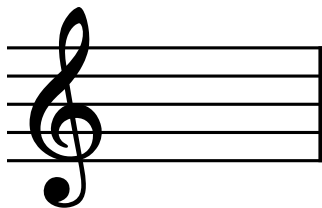
C Major



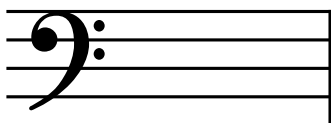
G Major



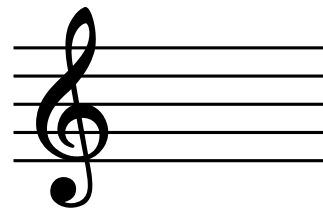
F Major



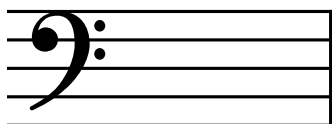
G Major



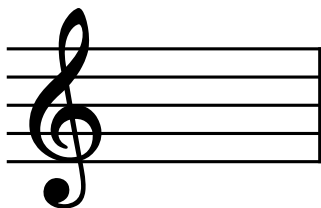
F Major



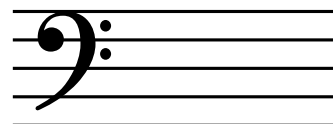
C Major



G Major



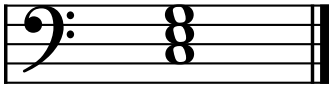
F Major



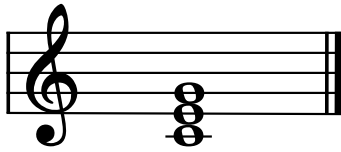
C Major

Theory Level 3 – Triad Identification

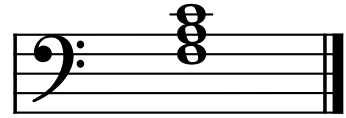
Name the Major triads.



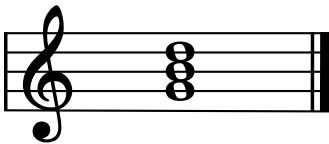
_____ Major



_____ Major



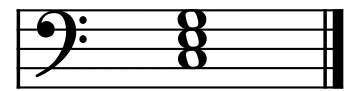
_____ Major



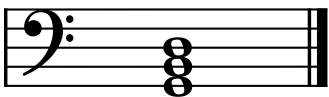
_____ Major



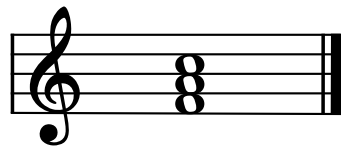
_____ Major



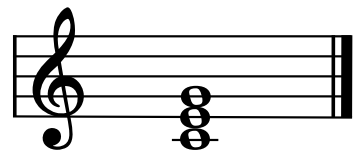
_____ Major



_____ Major



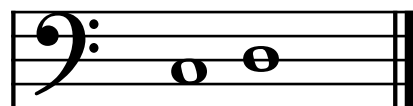
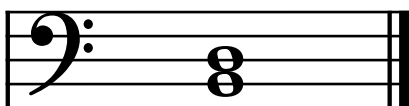
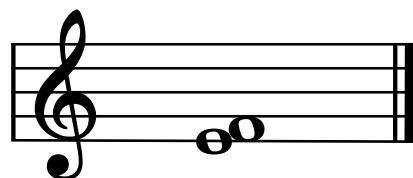
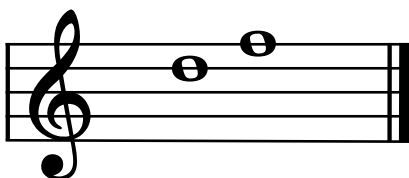
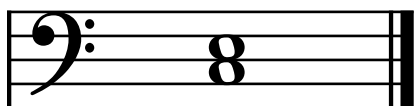
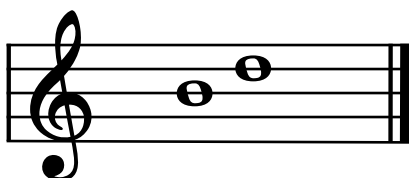
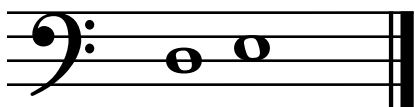
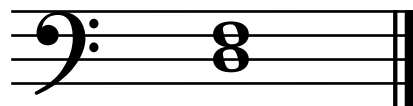
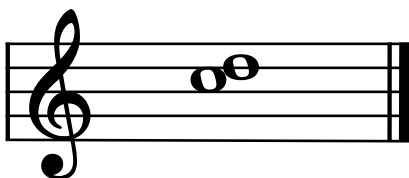
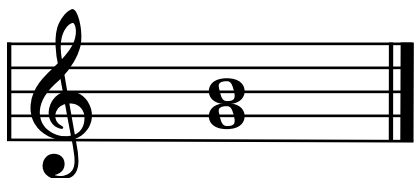
_____ Major



_____ Major

Theory Level 3 – Intervals

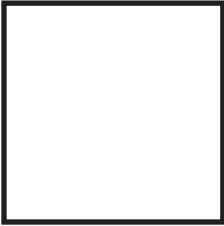
Write second (2nd) or third (3rd) for each interval.



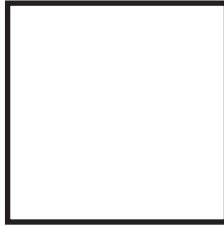
Theory Level 3 – Music Symbol Drawing

Draw the correct music symbol in each box.

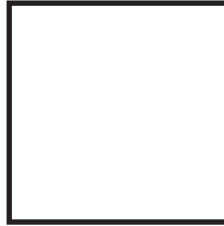
Fermata



Half rest



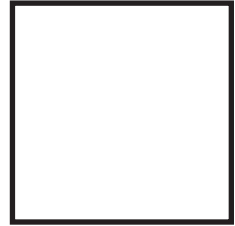
Natural



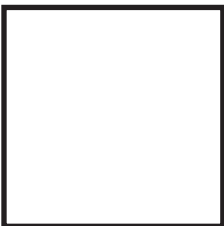
Mezzo forte



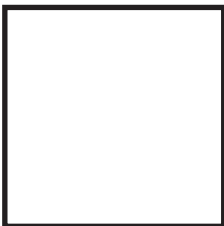
Whole note



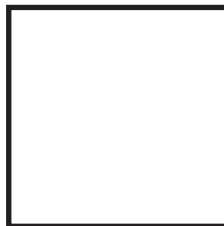
Flat



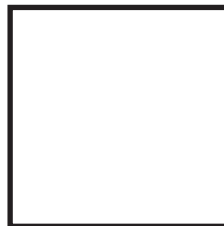
Two eighth notes
beamed



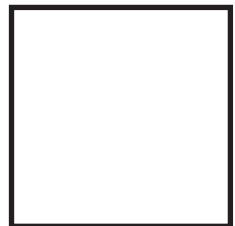
Whole rest



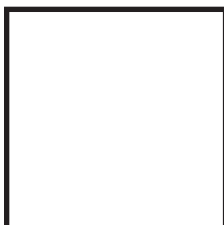
Mezzo piano



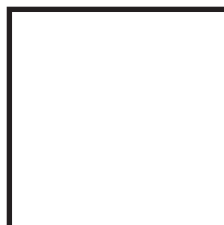
Half note



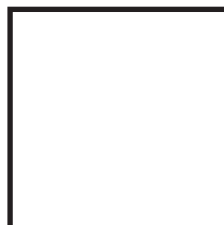
Dotted half note



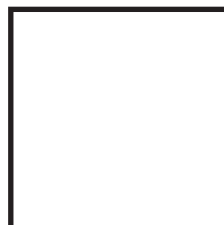
Sharp



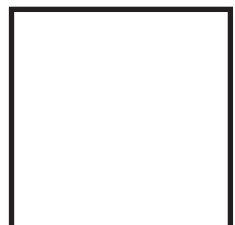
Crescendo



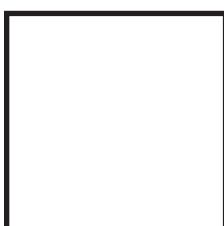
Ritardando



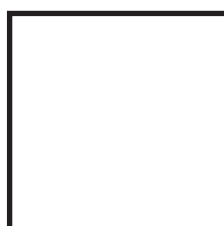
Quarter note



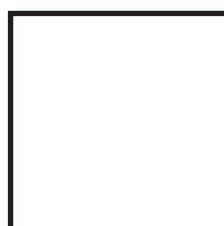
Diminuendo



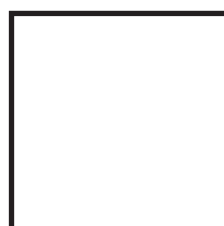
Octave sign



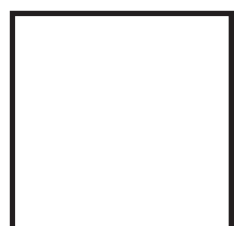
Quarter rest



Treble clef



Bass clef



Theory Level 3 – Terms and Definitions

Match the terms with the definitions.

Write the letter of the correct definition on the blank line.

- | | |
|-------------------------|--|
| _____ chord | A. In the written octave |
| _____ natural | B. The distance between two notes which are played together, creating “harmony” |
| _____ triad | C. An interval of eight notes |
| _____ crescendo | D. To hold a note or rest for extra value |
| _____ fermata | E. To play gradually softer |
| _____ root | F. Sharps or flats in a specific order and pattern after a clef sign |
| _____ 8va | G. A sharp, flat, or natural sign used in front of a note to change the note for one measure |
| _____ loco | H. The distance between two notes which are played separately, creating a “melody” |
| _____ octave | I. The note in any chord that gives the chord its name |
| _____ harmonic interval | J. When written above notes, it means to play the notes one octave higher. When written below notes, it means to play the notes one octave lower |
| _____ key signature | K. Cancels a sharp or flat |
| _____ melodic interval | L. Chord of three tones, consisting of a root, 3rd, and 5th above the root |
| _____ accidental | M. To play gradually louder |
| _____ diminuendo | N. Three or more tones sounding together |