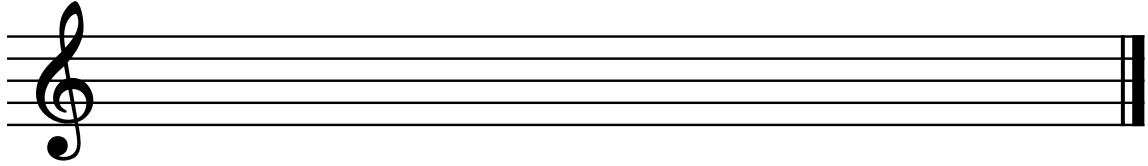


# Theory Level 7 – Scale Writing

## A, E-flat Major and f-sharp, c minor

Draw the scales one octave ascending and descending. Use whole notes. Use accidentals as needed. Do not use a key signature.

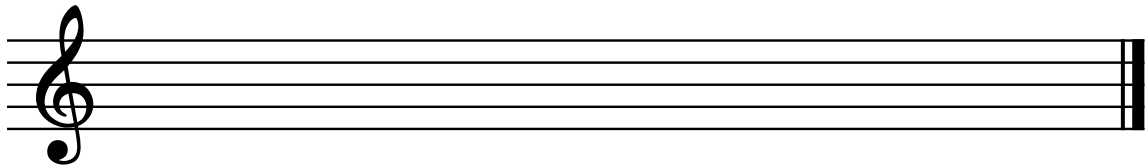
f-sharp  
natural minor



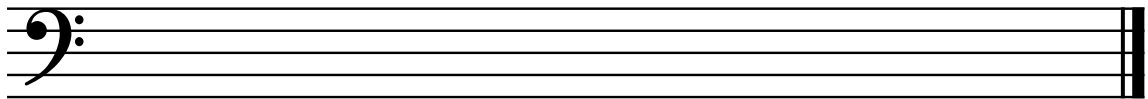
c harmonic  
minor



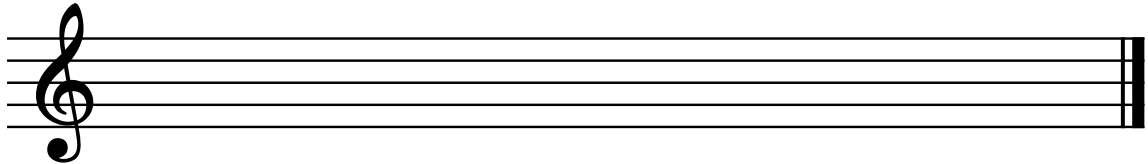
f-sharp  
melodic  
minor



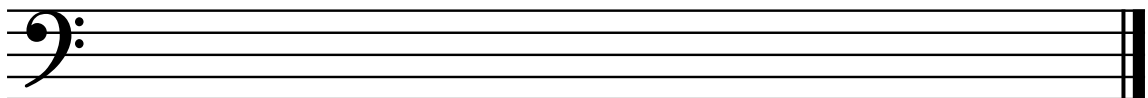
c natural  
minor



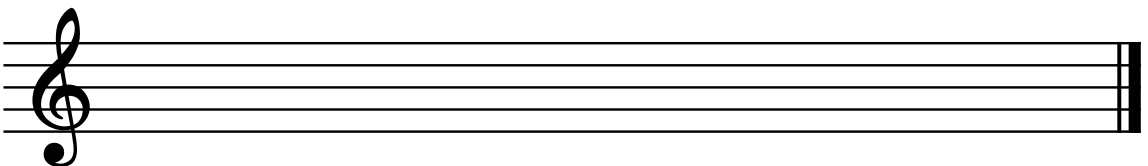
f-sharp  
harmonic  
minor



c melodic  
minor



A Major



E-flat Major

