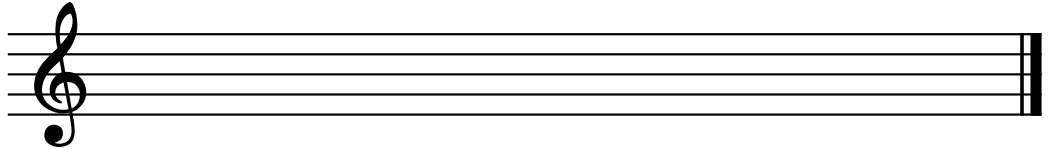


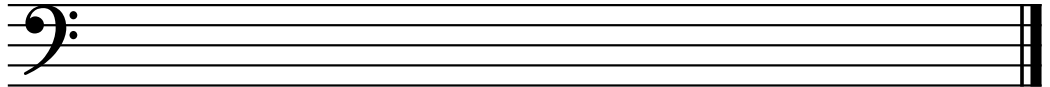
Theory Level 13 – Modes Practice

Draw the modes one octave going up. Use whole notes. Use accidentals as needed. Do not use a key signature. **This list is not complete. Be prepared to write any mode in any key.**

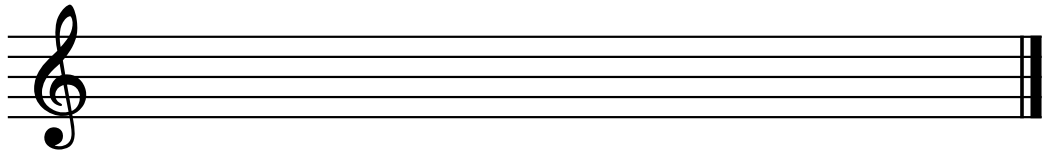
F Lydian



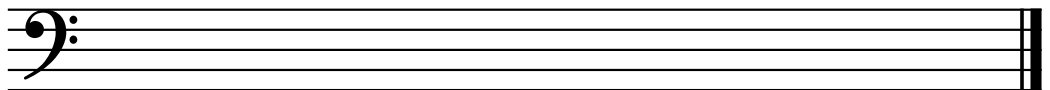
B \flat Mixolydian



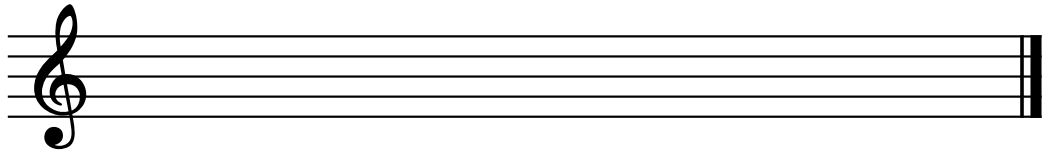
D Dorian



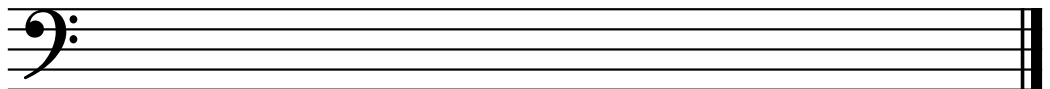
G Phrygian



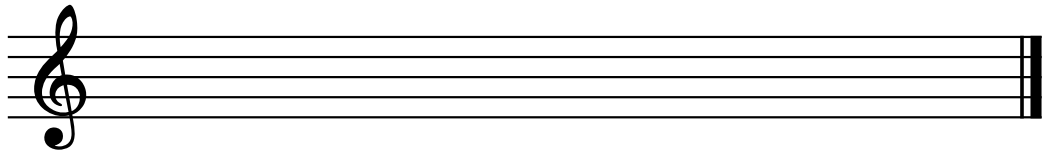
B Locrian



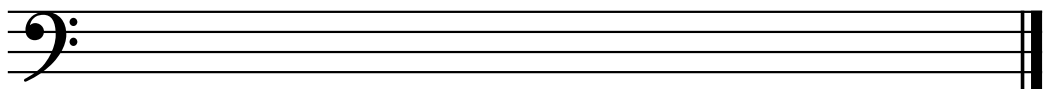
A \flat Lydian



C Lydian



C \sharp Dorian



F \sharp Mixolydian

