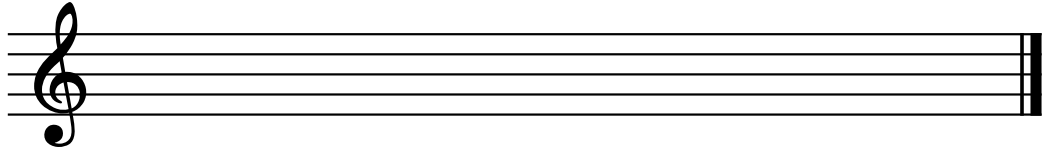


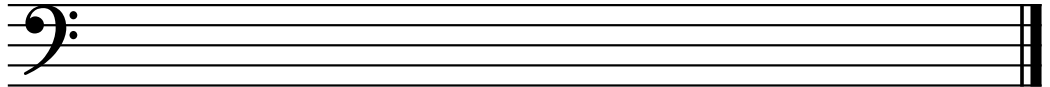
Theory Level 13 – Whole-Tone Scale Practice

Draw the whole tone scales one octave going up. Use whole notes. Use accidentals as needed. Do not use a key signature.

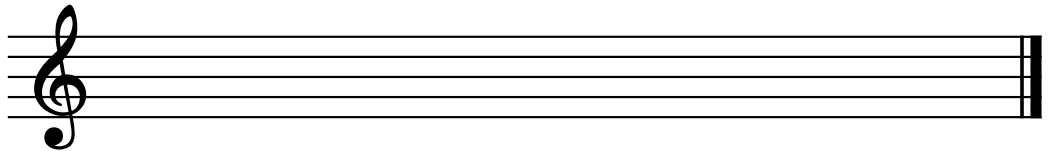
C Whole Tone



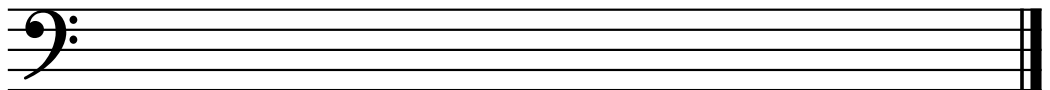
D# Whole Tone



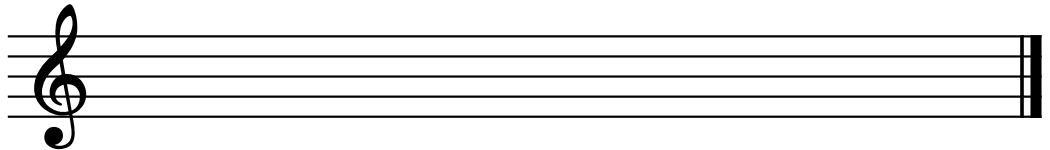
D \flat Whole Tone



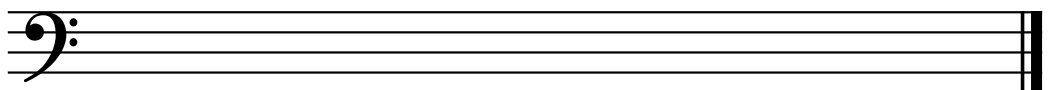
G Whole Tone



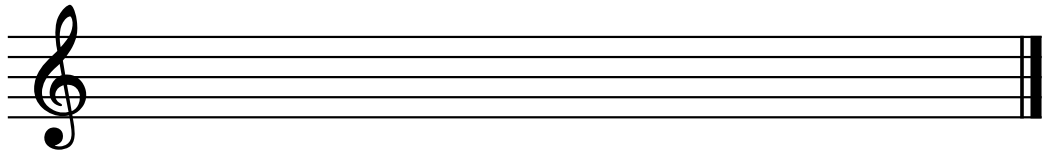
F# WholeTone



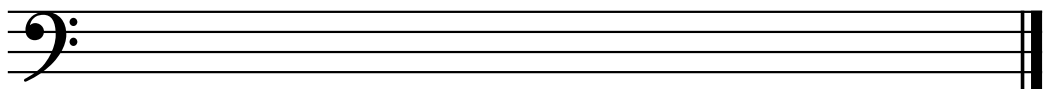
D Whole Tone



G Whole Tone



E# Whole Tone



E \flat Whole Tone

