

Written Test = 2 points each question

OMTA THEORY LEVEL 5 – PIANO

Student's Name KEY

Teacher's Name _____

Written Score	90
Aural Score	10
TOTAL SCORE	100

Test code: Clara Schumann

Write the letter name of each note on the line below. Use accidentals.

A musical staff with four measures. The notes are: Bb (first measure), Cb (second measure), A# (third measure), and Db (fourth measure). Below the staff, the letter names are written on lines: Bb, Cb, A#, and Db.

Draw each note on the staff. Use whole notes. Use accidentals, including naturals.

Four musical staves, each with a whole note. The notes are: A natural (first staff), C# (second staff), B natural (third staff), and Db (fourth staff). Below each staff, the letter name is written: A natural, C#, B natural, and Db.

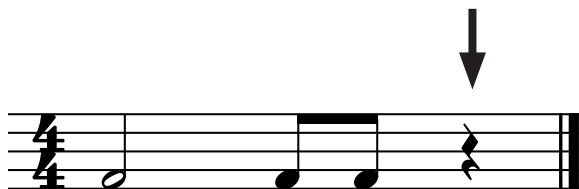
Draw one **note** under each arrow to complete the measures in the given time signatures.

Three musical staves. The first staff is in 3/4 time and has a partial note (quarter note) with an arrow pointing down to it. The second staff is in 2/4 time and has a partial note (quarter note) with an arrow pointing down to it. The third staff is in 4/4 time and has a partial note (quarter note) with an arrow pointing down to it.

TURN TO THE NEXT PAGE


OMTA THEORY LEVEL 5 — PIANO


Draw one **rest** under each arrow to complete the measures in the given time signatures.




On the lines below, write the total time value of the note(s) and rest(s) in $\frac{4}{4}$ time.

NOTES AND RESTS

 1 1/2 beats

 2 beats

 3 beats

 4 beats

 1 beat

TIME VALUE LIST

1/2 beat

1 beat

1 1/2 beats

2 beats

3 beats

4 beats

Which Major key signature has one flat? Circle the correct answer.

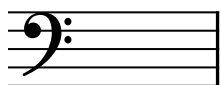


C Major

F Major

G Major

Which minor key signature has no sharps or flats? Circle the correct answer.



d minor

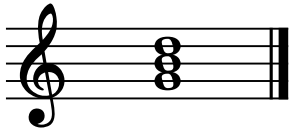
a minor

e minor

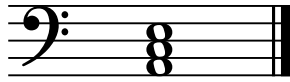
TURN TO THE NEXT PAGE

OMTA THEORY LEVEL 5 – PIANO

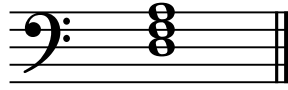
On the blank lines, write the root of each triad and circle whether the triad is Major or minor.



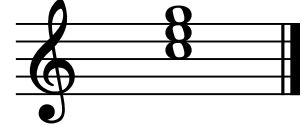
G Major
(g) minor



a Major
(A) minor

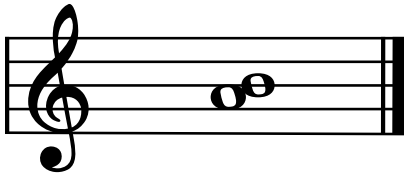


d Major
(D) minor

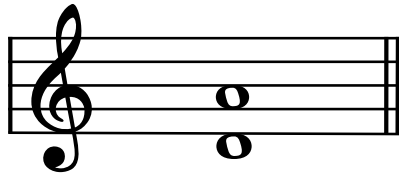


C Major
(c) minor

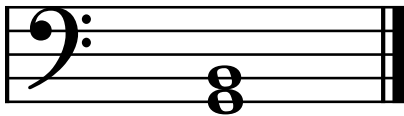
Draw the interval above each note using a whole note. Use accidentals as needed.



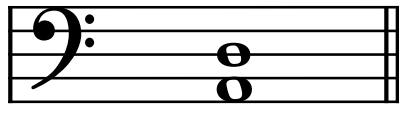
Major 2nd



5th

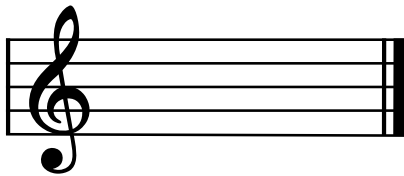


Major 3rd

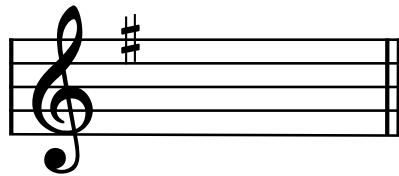


4th

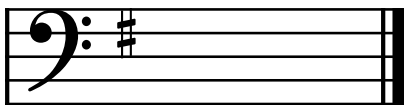
Draw the key signatures.



C Major



G Major



e minor



d minor

OMTA THEORY LEVEL 5 — PIANO

Which scale degree is raised in the harmonic minor scale? Circle the correct answer.

Second

Seventh

Sixth

Draw the a harmonic minor scale one octave going up, one note above each arrow. Use whole notes. Use accidentals as needed. Do not use a key signature.

(2 pts.)

A musical staff with a bass clef. Below the staff are eight upward-pointing arrows. Above each arrow is a whole note. The notes from left to right are: G (below the staff), F (below the staff), E (below the staff), D (below the staff), C (below the staff), B (below the staff, with a sharp sign #), A (below the staff), and G (below the staff).

Match the terms with the definitions. Write the letter of the correct definition on the blank line.

TERMS

 B ledger (leger) lines

 F relative major and minor keys

 D accelerando (accel.)

 C scale degree

 E major triad

 A minor triad

DEFINITIONS

A. Triad with three half steps between the notes in the lower third and four half steps between the notes in the upper third

B. Added above or below the staff to extend the staff

C. Name or number given to each note of the scale

D. To play gradually faster

E. Triad with four half steps between the notes in the lower third and three half steps between the notes in the upper third

F. Share the same key signature

OMTA THEORY LEVEL 5 – PIANO

Use the music example below to answer the following questions. The measures are numbered. Circle the correct answer or fill in the blank for each question.

1 *Allegro* 2 3 4 5

p *pp* *rit.*

What is the time signature for this music example?

2
4

3
4

4
4

What is the meaning of the tempo marking?

A quick, fast tempo

A moderate tempo

A walking tempo

What is the key of the music example?

F Major

d minor

a minor

What is the interval circled in measure 2?

Major 3rd

minor 3rd

4th

What is the meaning of the dynamic marking in measure 3?

Very soft

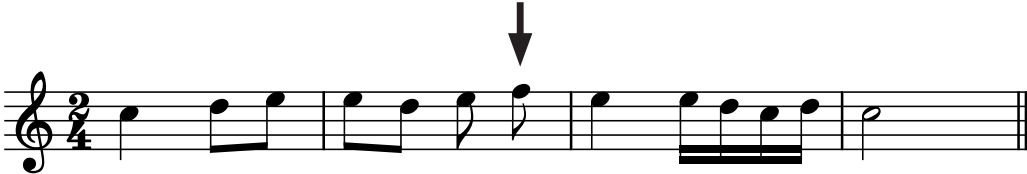
Soft

Medium soft

Aural Test = 1 point each question

OMTA AURAL AWARENESS LEVELS 5 & 6

Aural Score
10

1. 

2. 

3. Andante Allegro

4. Parallel motion Contrary motion

5. 3rd 4th

6.  Same Different

7. Crescendo Diminuendo

8. Accelerando Ritardando

9. 

10. 