

OMTA THEORY LEVEL 6 — PIANO

Label the Major or minor key shown by each key signature.



g minor
(G)



F Major
(f)

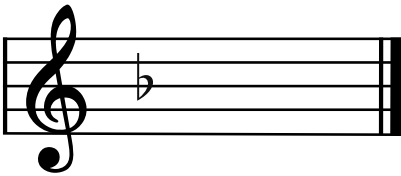


D Major
(b)

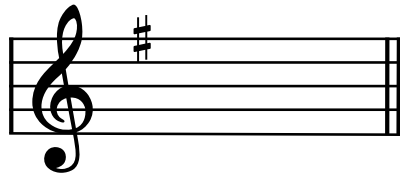


e minor
(E)

Draw the key signatures.



d minor



G Major

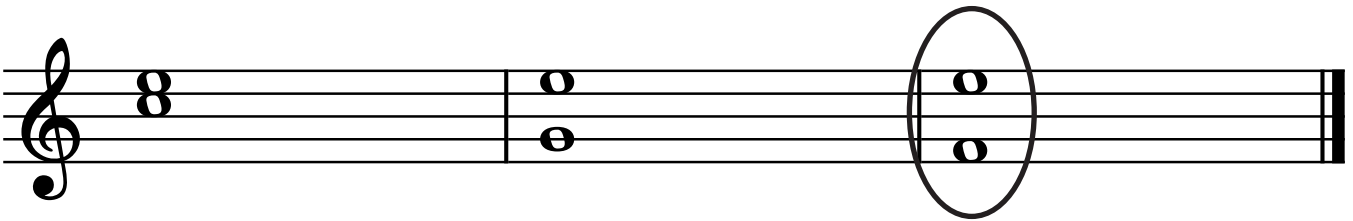


B-flat Major



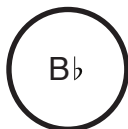
b minor

Circle the interval of a 7th.



What is the subdominant in the key of F Major? Circle the correct answer.

F

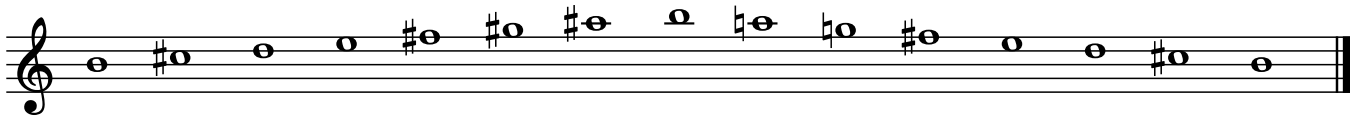


C

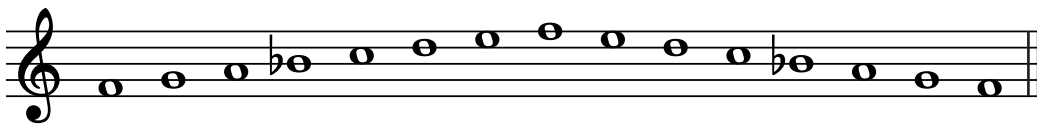
TURN TO THE NEXT PAGE

OMTA THEORY LEVEL 6 — PIANO

Write the name of the tonic note of each scale and circle whether the scale is Major, natural minor, harmonic minor, or melodic minor.



Tonic: b Major
 natural minor
 (B) (B) harmonic minor
 melodic minor



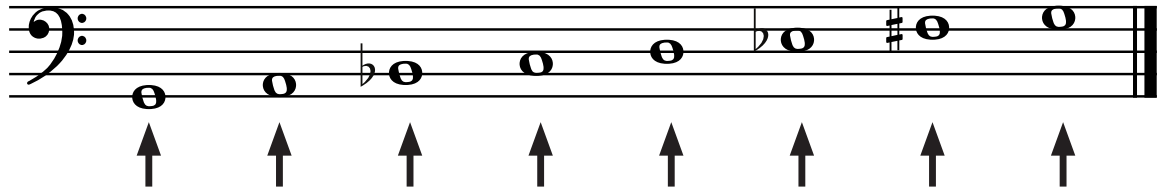
Tonic: F Major
 natural minor
 (f) harmonic minor
 melodic minor



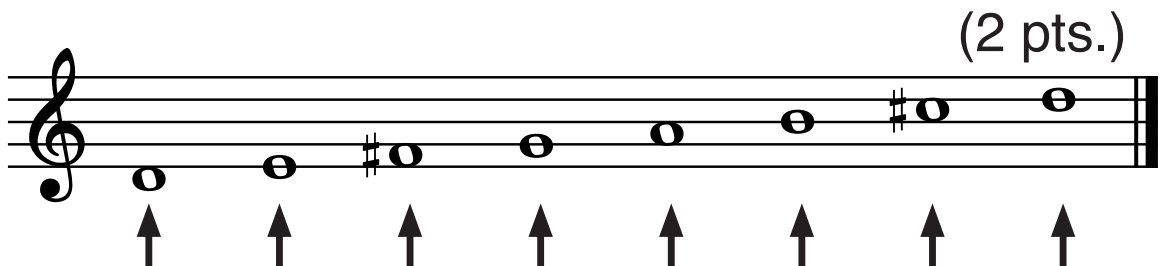
Tonic: a Major
 natural minor
 (A) (A) harmonic minor
 melodic minor

Draw the scales one octave ascending (going up), one note above each arrow. Use whole notes. Use accidentals as needed. Do not use a key signature. (2 pts.)

g harmonic minor



D Major



OMTA THEORY LEVEL 6 — PIANO

Complete the minor triads above the given root using whole notes. Use accidentals as needed.

Complete the Major triads above the given root using whole notes. Use accidentals as needed.

Draw the correct interval above each note using a whole note. Use accidentals as needed.

minor 3rd
6th
7th
5th

Match the terms with the definitions. Write the letter of the correct definition on the blank line.

TERMS

- E adagio
- C con spirito
- D marcato
- A poco a poco
- B dolce

DEFINITIONS

- A. little by little
- B. sweetly
- C. with spirit
- D. marked, emphasized
- E. a slow tempo, slower than andante

OMTA THEORY LEVEL 6 – PIANO

Use the music example below to answer the following questions. The measures are numbered. Circle the correct answer or fill in the blank for each question.

Giocoso

What is the time signature for this music example?

$\frac{2}{4}$

$\frac{3}{4}$

$\frac{4}{4}$

What is the meaning of *giocoso*?

Joyful or playful

Sweetly

Slowly and sadly

The music example is in the key of Bb Major. Include Major or minor in the answer.

(b♭ major)

What is the meaning of the symbols circled in measure 4?

To play the notes louder

To hold the notes for extra value

Repeat the section

In measure 4, the melody ends on what scale degree?

Tonic

Subdominant

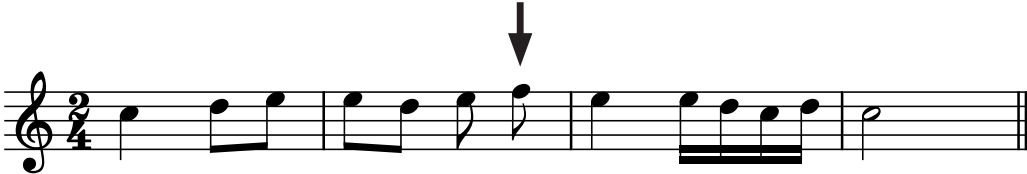
Dominant

END OF WRITTEN EXAM

Aural Test = 1 point each question

OMTA AURAL AWARENESS LEVELS 5 & 6

Aural Score
10

1. 

2. 

3. Andante Allegro

4. Parallel motion Contrary motion

5. 3rd 4th

6.  Same Different

7. Crescendo Diminuendo

8. Accelerando Ritardando

9. 

10. 