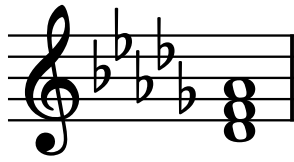


# Theory Level 10 – Tonic, Subdominant, Dominant 7th

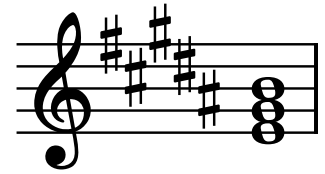
In the Major keys, label the chords as Tonic (I), Subdominant (IV), or Dominant 7th (V7).



\_\_\_\_\_



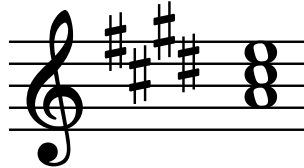
\_\_\_\_\_



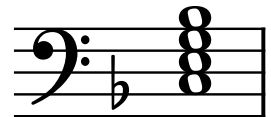
\_\_\_\_\_



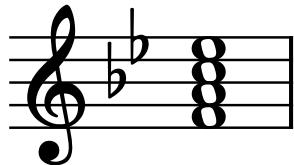
\_\_\_\_\_



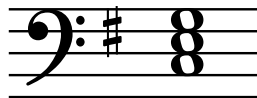
\_\_\_\_\_



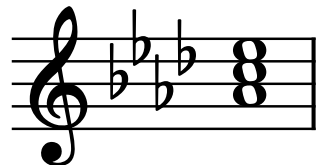
\_\_\_\_\_



\_\_\_\_\_

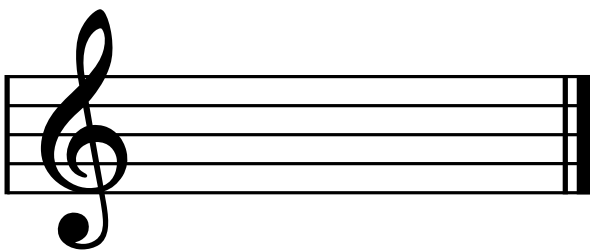


\_\_\_\_\_

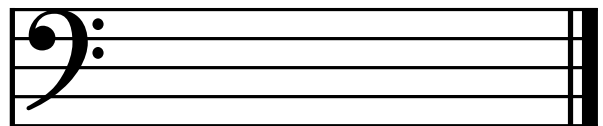


\_\_\_\_\_

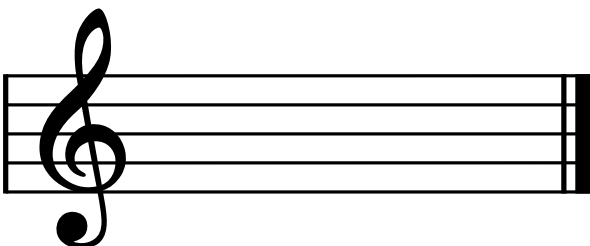
Draw the Tonic (I), Subdominant (IV), and Dominant (V) triads in root position. Use whole notes. Use accidentals as needed.



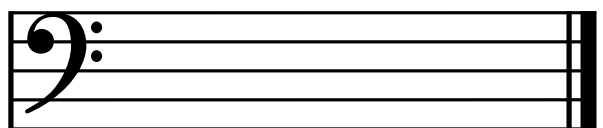
f# minor:      i      iv      V



D $\flat$  Major:      I      IV      V



B Major:      I      IV      V



e $\flat$  minor:      i      iv      V