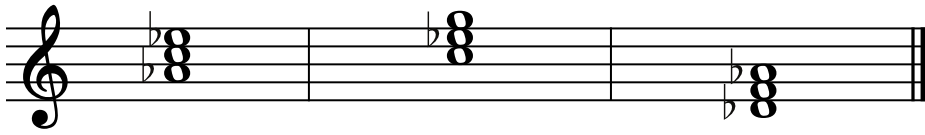


# Theory Level 12 – Chord Scale Degrees

In each given key, circle the correct scale degree for each chord.

## A $\flat$ Major



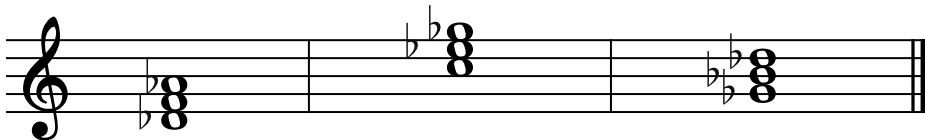
Subdominant	Submediant	Dominant
Dominant	Mediant	Subdominant
Tonic	Dominant	Supertonic

## C# Major



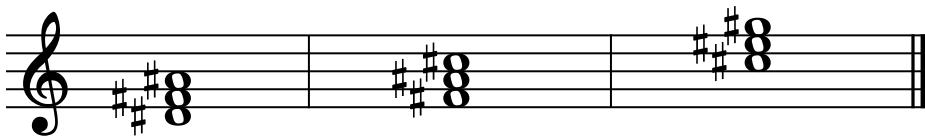
Leading tone	Tonic	Mediant
Supertonic	Dominant	Leading tone
Submediant	Subdominant	Submediant

## D $\flat$ Major



Subdominant	Leading tone	Subdominant
Tonic	Mediant	Dominant
Dominant	Dominant	Tonic

## F# Major



Supertonic	Dominant	Dominant
Submediant	Subdominant	Tonic
Leading tone	Tonic	Subdominant