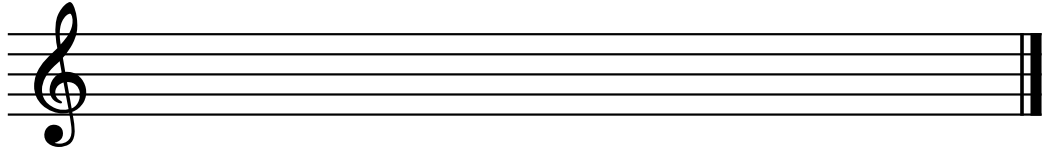




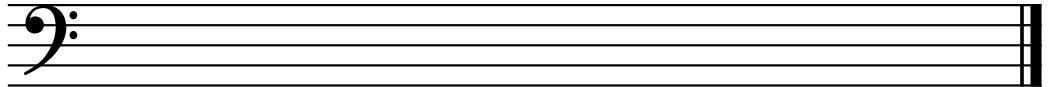
# Theory Level 13 – Whole-Tone Scale Practice

Draw the whole tone scales one octave going up. Use whole notes. Use accidentals as needed. Do not use a key signature.

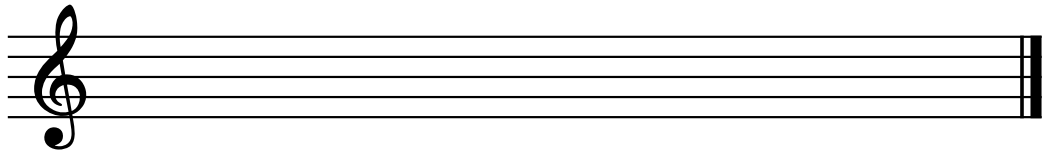
C Whole Tone



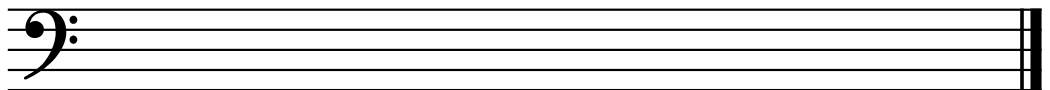
D# Whole Tone



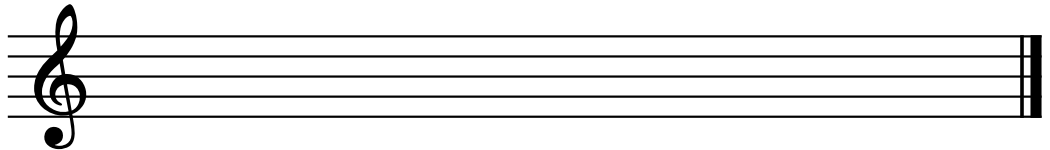
D $\flat$  Whole Tone



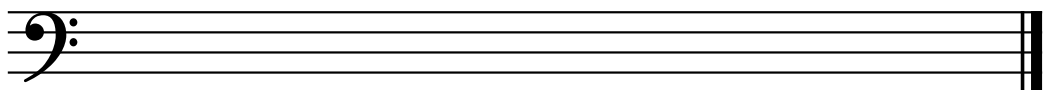
G Whole Tone



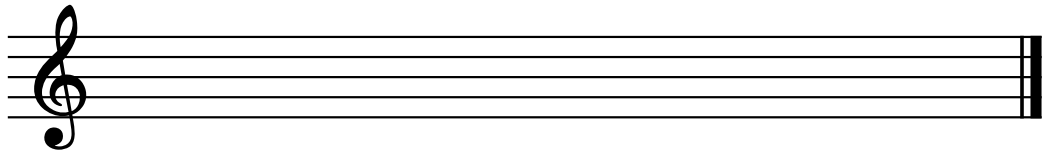
F# WholeTone



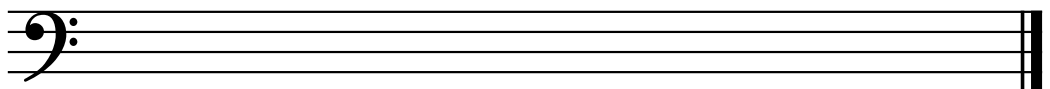
D Whole Tone



G Whole Tone



E# Whole Tone



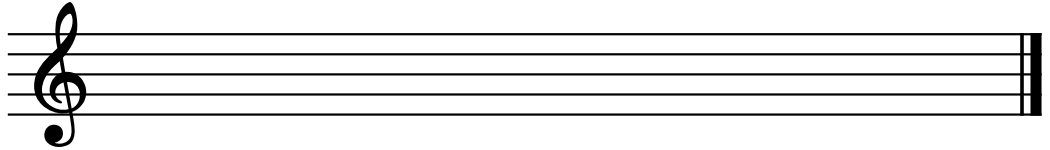
E $\flat$  Whole Tone



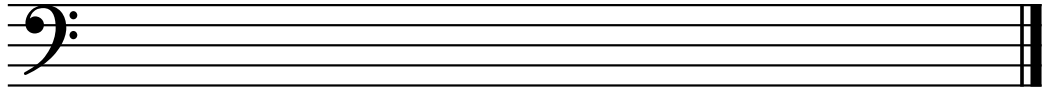
# Theory Level 13 – Pentatonic Scale Practice

Draw the major pentatonic scales one octave going up. Use whole notes. Use accidentals as needed. Do not use a key signature. **This list is not complete. Be prepared to write a pentatonic scale starting on any note by memorizing the structure of the pentatonic scale.**

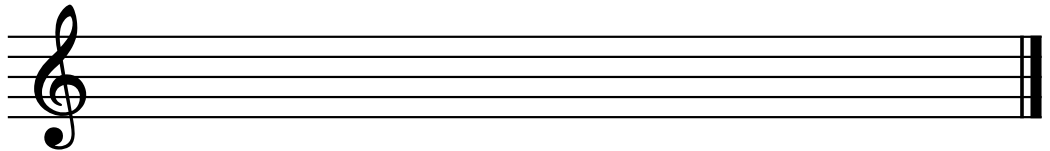
D Pentatonic



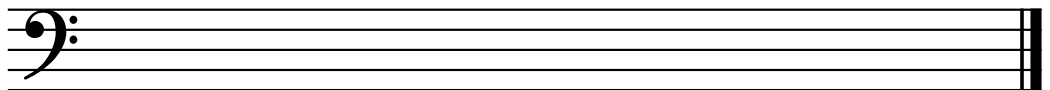
A $\flat$  Pentatonic



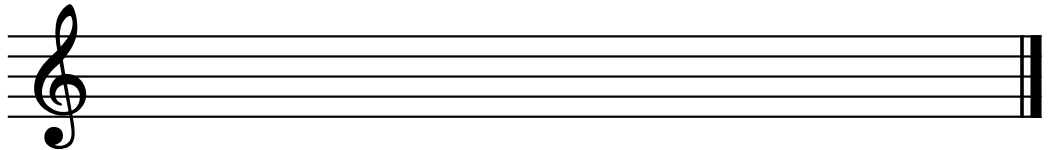
C Pentatonic



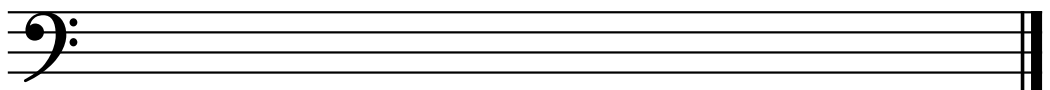
G Pentatonic



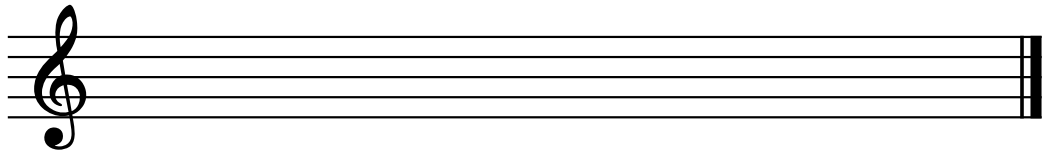
B $\flat$  Pentatonic



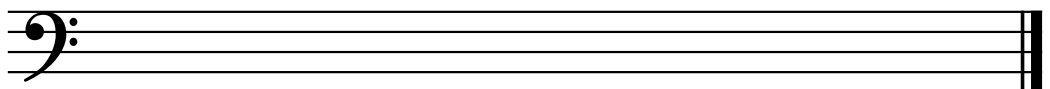
F Pentatonic



A Pentatonic



C $\sharp$  Pentatonic



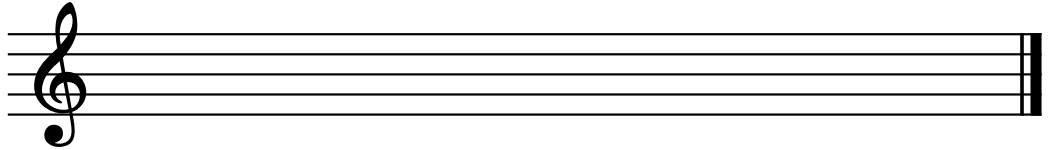
D $\sharp$  Pentatonic



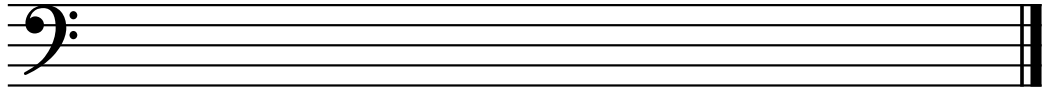
# Theory Level 13 – Modes Practice

Draw the modes one octave going up. Use whole notes. Use accidentals as needed. Do not use a key signature. **This list is not complete. Be prepared to write any mode in any key.**

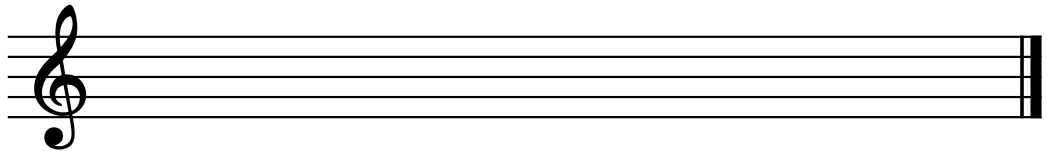
F Lydian



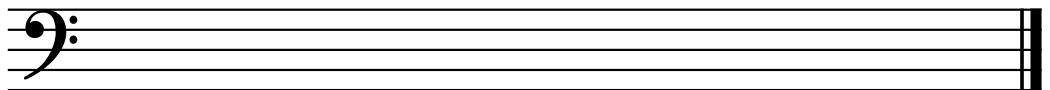
B $\flat$  Mixolydian



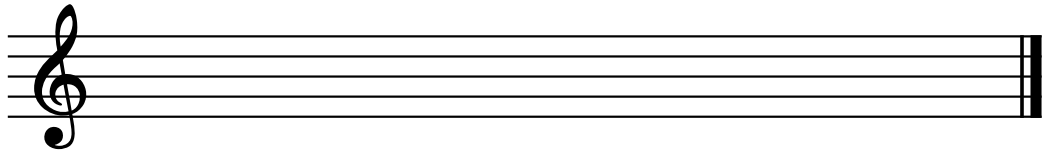
D Dorian



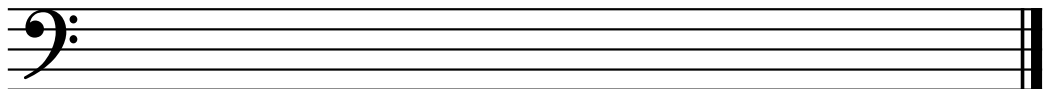
G Phrygian



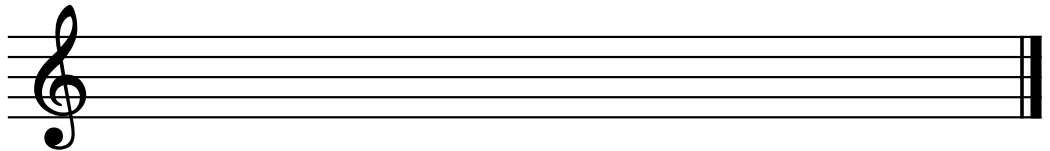
B Locrian



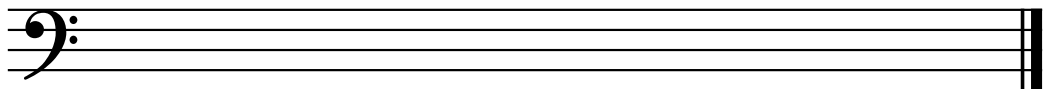
A $\flat$  Lydian



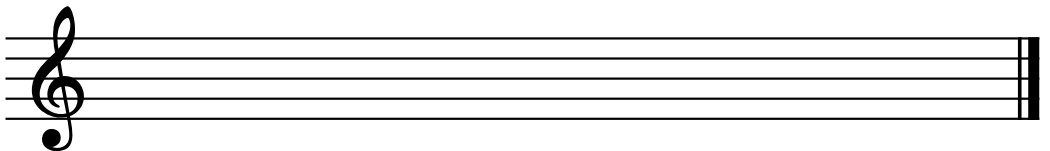
C Lydian



C $\sharp$  Dorian



F $\sharp$  Mixolydian

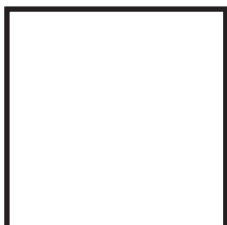




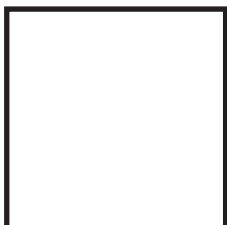
# Theory Level 13 – Music Symbol Drawing

Draw the correct music symbol in each box.

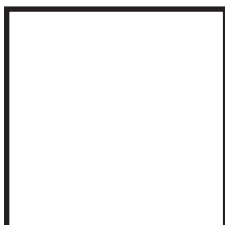
Main gauche



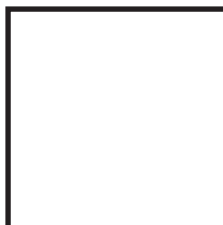
Main droite



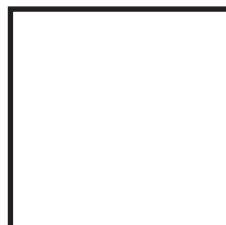
Portato



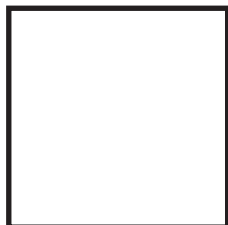
Mano sinistra



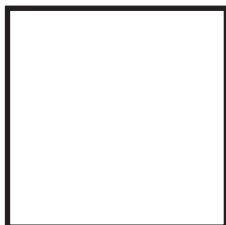
Mano destra



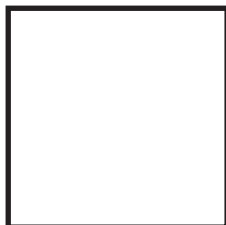
Binary form  
pattern



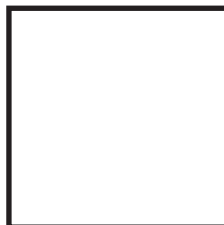
Thirty-second rest



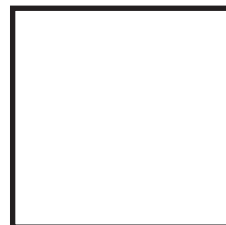
Ternary form  
pattern



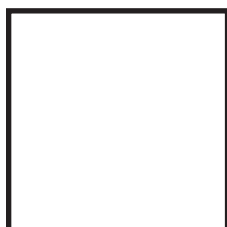
Rondo form  
pattern



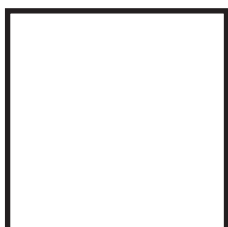
Turn



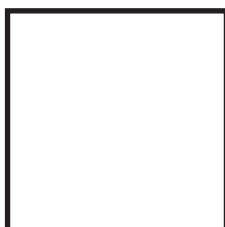
Double-dotted  
eighth rest



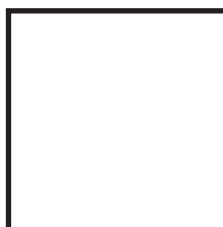
Rounded binary  
form pattern



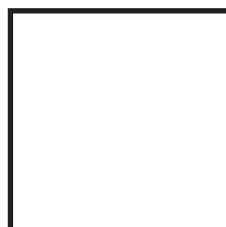
Mordent



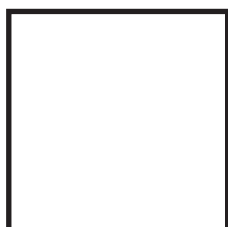
Augmented chord  
symbol



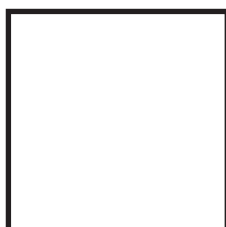
Sostenuto



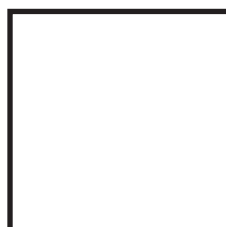
Short trill



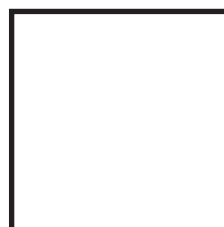
Grace note



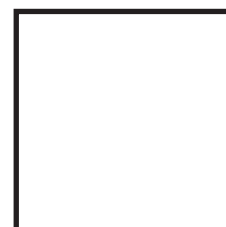
Appoggiatura



Diminished chord  
symbol



Tenuto



# Theory Level 13 – Terms and Definitions

Match the terms with the definitions. Write the letter of the correct definition on each blank line.

## Modes

\_\_\_\_\_ Ionian

\_\_\_\_\_ Lydian

\_\_\_\_\_ Mixolydian

\_\_\_\_\_ Aeolian

\_\_\_\_\_ Dorian

\_\_\_\_\_ Phrygian

\_\_\_\_\_ Locrian

A. Minor with a lowered 2nd scale degree

B. Same as the natural minor scale

C. Minor with a lowered 2nd and 5th scale degree

D. Major with a lowered 7th scale degree

E. Major with a raised 4th scale degree

F. Minor with a raised 6th scale degree

G. Same as Major scale

## Forms

\_\_\_\_\_ Sonata-Allegro form

\_\_\_\_\_ Binary

\_\_\_\_\_ Ternary

\_\_\_\_\_ Rondo

\_\_\_\_\_ Rounded Binary

A. A-B-A-C-A

B. A-B or A-A-B-B

C. Exposition, Development, Recapitulation

D. A-B-A

E. A-B-a

## Meters

\_\_\_\_\_ Asymmetrical meter

\_\_\_\_\_ Simple meter

\_\_\_\_\_ Compound meter

\_\_\_\_\_ Duple meter

\_\_\_\_\_ Triple meter

\_\_\_\_\_ Quadruple meter

A. Meter with two beats in each measure

B. Meter in which beats are not grouped into units divisible by two or three.

C. Meter with three beats in each measure

D. Meter with four beats in each measure

E. Music in which the beat can be divided by two.

F. Music in which the beat can be divided by three.

# Theory Level 13 – Terms and Definitions

Fill in each blank with the correct word from the word list.

## Word List

transposition	modes	main gauche	homophonic
whole-tone scale	atonality	main droite	monophonic
major pentatonic scale	bitonality	mano sinistra	polyphonic
parallel keys	contrapuntal	mano destra	

_____	“Many voices” two or more parts each having a melody of its own; contrapuntal
_____	Italian, left hand
_____	Consisting of a single musical line without accompanying harmony or chords
_____	Music having two tonal centers or keys at the same time
_____	French, left hand
_____	Having one melodic line at a time, the other voices or parts serving as accompaniment
_____	Italian, right hand
_____	French, right hand
_____	Two or more independent lines played at the same time
_____	The absence of functional harmony as a primary structural element
_____	The same pattern of intervals beginning on a different note
_____	Seven scales with different arrangements of whole- and half-step patterns
_____	A scale with five pitches
_____	A six-tone scale moving by whole steps.
_____	Major and minor keys that have the same tonic



# Theory Level 13 – Terms and Definitions

Match the terms with the definitions. Write the letter of the correct definition on each blank line.

## Ornaments

\_\_\_\_\_ Turn

\_\_\_\_\_ Mordent

\_\_\_\_\_ Short trill

\_\_\_\_\_ Grace note

\_\_\_\_\_ Appoggiatura

A. a quick alternation between the written note and a step above; usually begins on the upper note but may begin on the written note depending on the usual context and period

B. A music ornament usually played just before the main beat and printed smaller to indicate it is melodically and harmonically nonessential

C. Begins on the written note, steps down, and returns to the written note; should be played quickly and begins on the beat

D. Play the note above the written note, the written note, the note below the written note, and the written note again

E. Is an added note that is important melodically and suspends the principal note by a portion of its time-value, often about half

## Musical Periods

Write the starting and ending year for each musical period.

The periods are not listed in any particular order.

Classical \_\_\_\_\_ to \_\_\_\_\_

Contemporary \_\_\_\_\_ to \_\_\_\_\_

Baroque \_\_\_\_\_ to \_\_\_\_\_

Romantic \_\_\_\_\_ to \_\_\_\_\_

## Blues Progression

Write the chord progression for the 12-bar blues.

\_\_\_\_\_

\_\_\_\_\_

\_\_\_\_\_