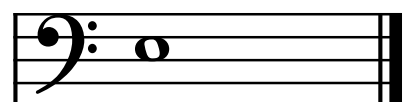
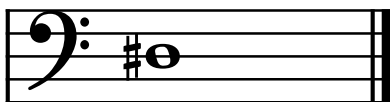
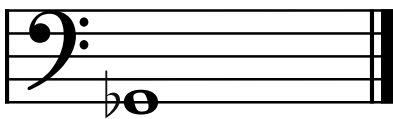
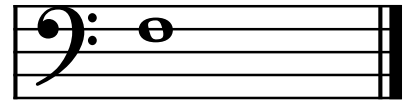
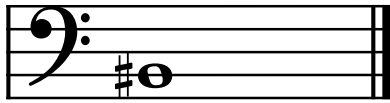
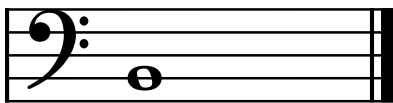
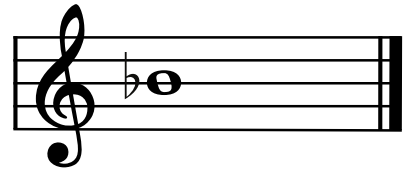
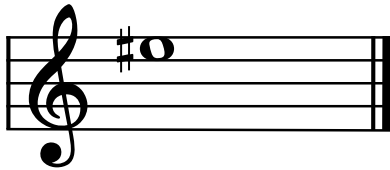
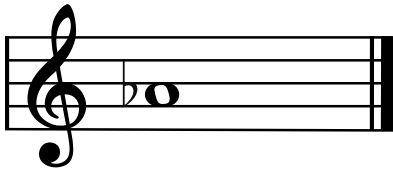
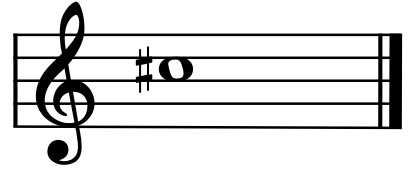
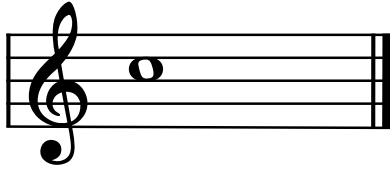
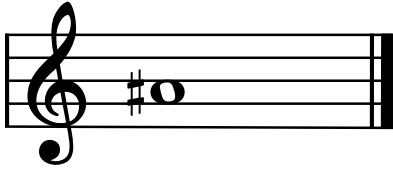


Theory Level 6 – Enharmonic Notes

Draw an enharmonic note next to each note using whole notes.
Use accidentals as needed.



Theory Level 6 – Rhythms

Draw **one note** under the arrow to complete each measure in the given time signatures.

4/4

3/4

2/4

Draw **one rest** under the arrow to complete each measure in the given time signatures.

4/4

3/4

2/4

Theory Level 6 – Key Signature Identification

Write the name of the Major or minor key shown by each key signature.



_____ Major



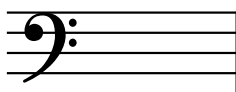
_____ minor



_____ minor



_____ Major



_____ Major



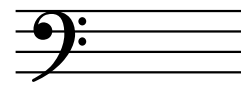
_____ minor



_____ Major



_____ Major



_____ minor



_____ Major



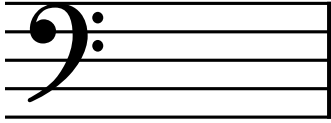
_____ minor



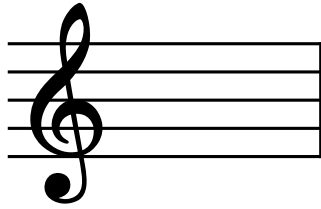
_____ minor

Theory Level 6 – Key Signature Writing

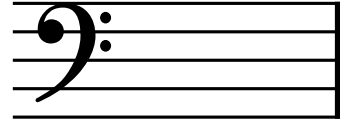
Draw the correct key signature for each Major or minor key.



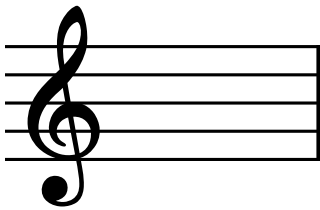
D Major



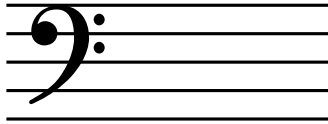
b minor



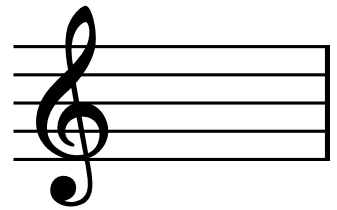
g minor



B-flat Major



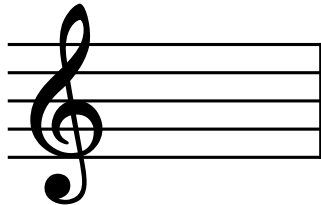
C Major



d minor



F Major



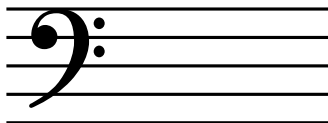
D Major



a minor



e minor



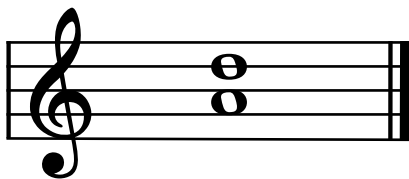
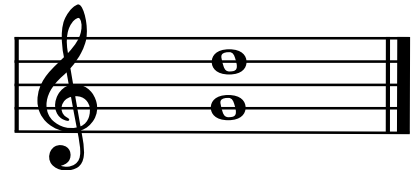
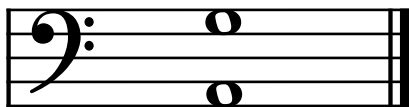
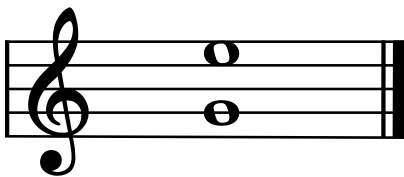
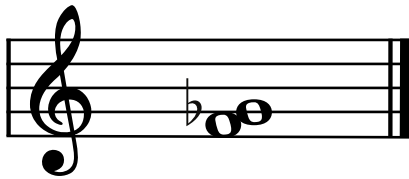
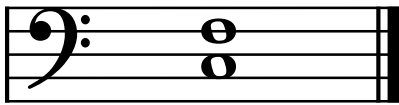
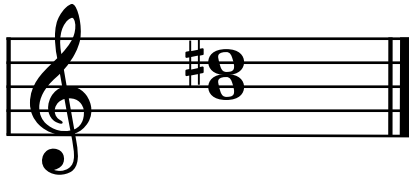
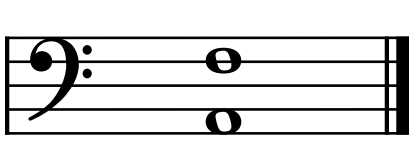
G Major



g minor

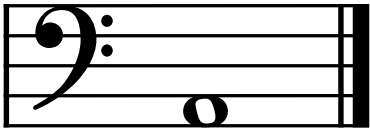
Theory Level 6 – Interval Identification

Label the intervals as Major 2nd, minor 2nd, Major 3rd, minor 3rd, 4th, 5th, 6th, or 7th.
(no distinction between perfect and non-perfect 4ths and 5ths or Major and minor 6ths and 7ths)

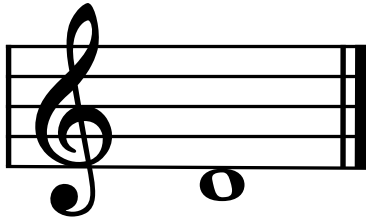


Theory Level 6 – Interval Writing

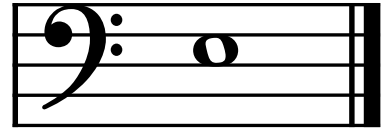
Draw the correct interval above each note using a whole note. Use accidentals as needed.



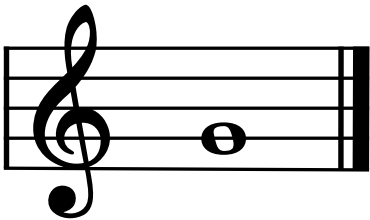
minor 3rd



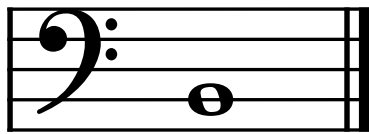
Major 3rd



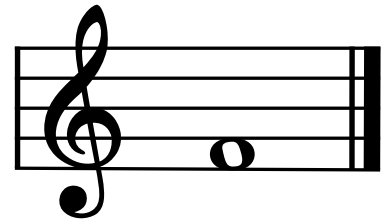
5th



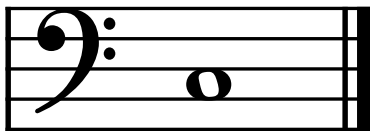
6th



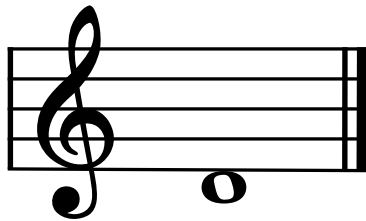
4th



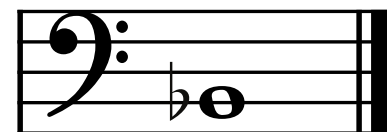
7th



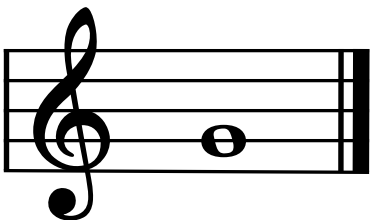
Major 2nd



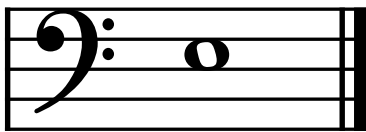
minor 3rd



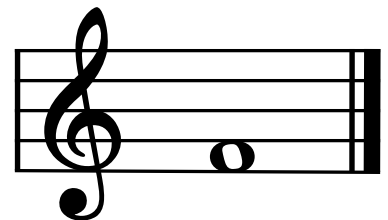
minor 2nd



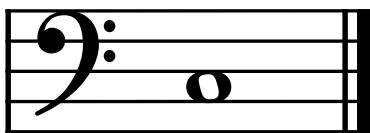
5th



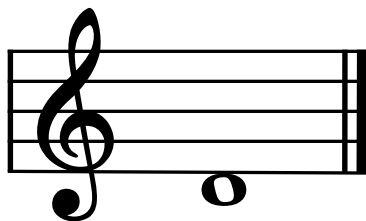
7th



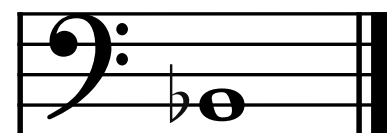
Major 3rd



6th



4th



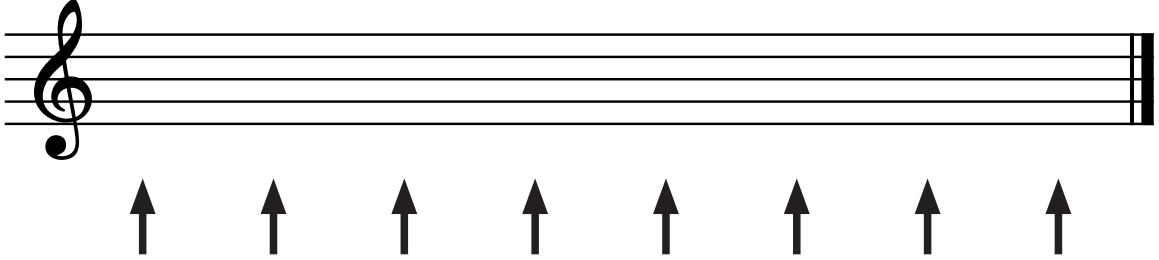
minor 3rd

Theory Level 6 – Major Scale Writing Review

C, F, G Major

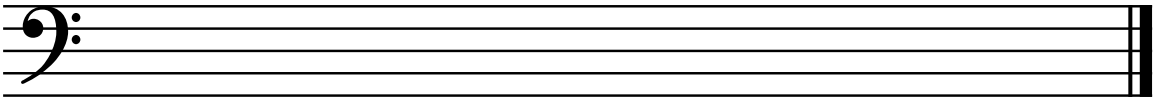
Draw the scales one octave going up. Use whole notes. Use the arrows as a guide for note spacing. Use accidentals as needed. Do not use a key signature.

C Major



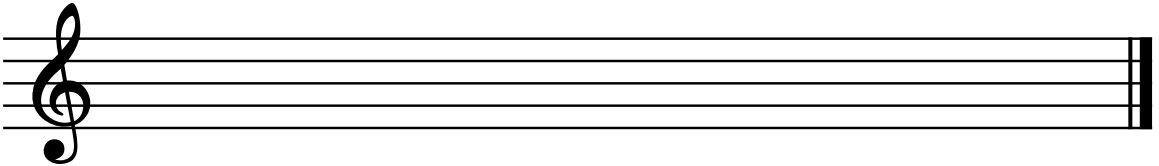
A musical staff in treble clef with a C-clef. Below the staff are eight upward-pointing arrows, evenly spaced, indicating the positions for notes in an ascending scale.

F Major



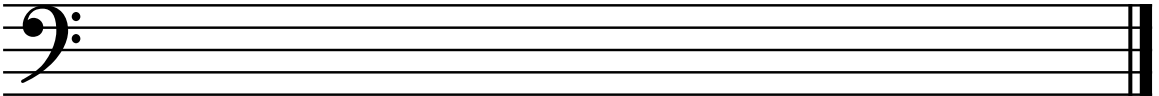
A musical staff in bass clef with an F-clef.

G Major



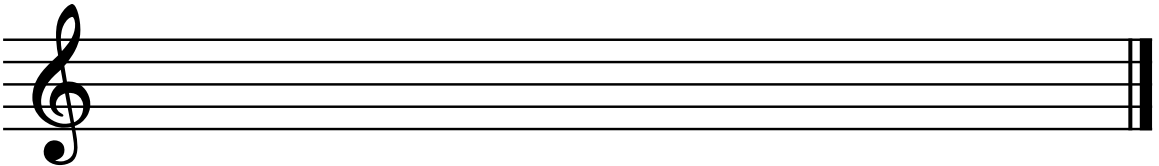
A musical staff in treble clef with a C-clef.

C Major



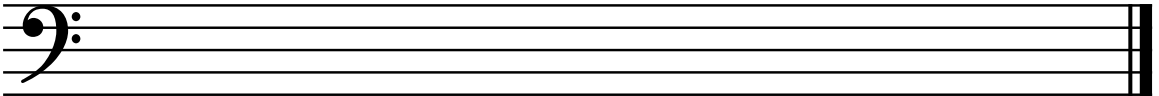
A musical staff in bass clef with an F-clef.

F Major



A musical staff in treble clef with a C-clef.

G Major



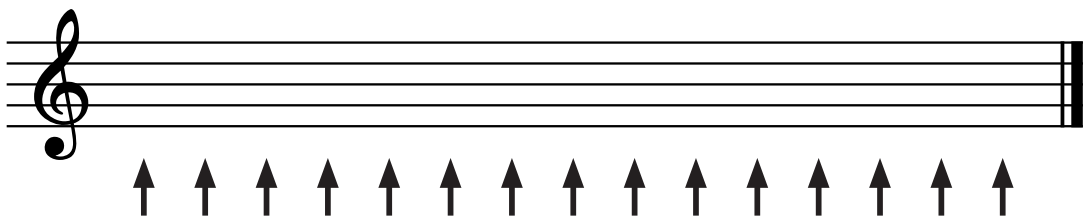
A musical staff in bass clef with an F-clef.

Theory Level 6 – Minor Scale Review

a, d, e, minor

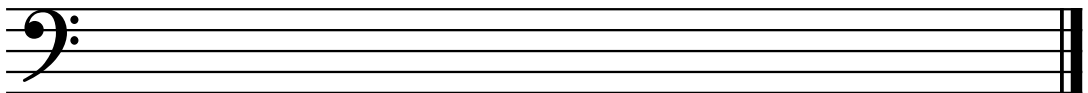
Draw the scales one octave ascending (going up) and descending (going down). Use the arrows as a guide for note spacing. Use whole notes. Use accidentals as needed. Do not use a key signature.

e natural minor



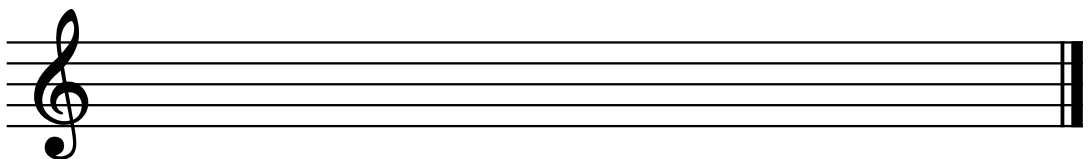
A musical staff in treble clef with 14 upward-pointing arrows below it, indicating the positions for notes in an ascending scale.

d harmonic minor



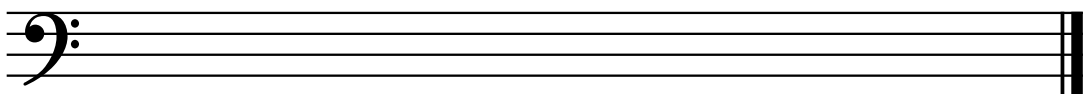
A musical staff in bass clef, empty for writing the d harmonic minor scale.

e melodic minor



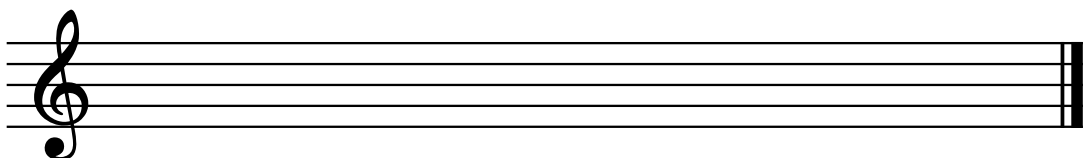
A musical staff in treble clef, empty for writing the e melodic minor scale.

a natural minor



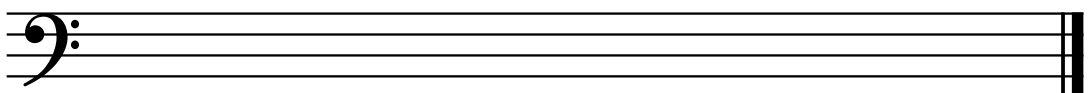
A musical staff in bass clef, empty for writing the a natural minor scale.

e harmonic minor



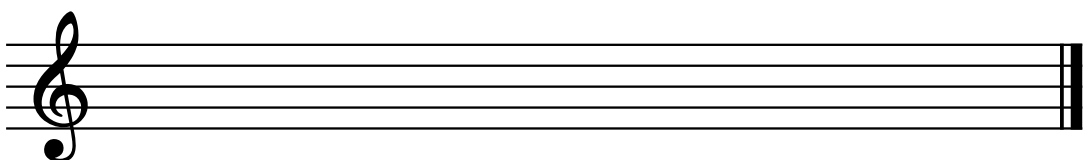
A musical staff in treble clef, empty for writing the e harmonic minor scale.

a harmonic minor



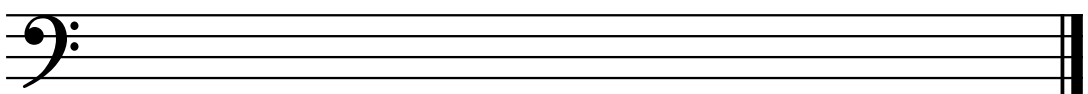
A musical staff in bass clef, empty for writing the a harmonic minor scale.

d melodic minor



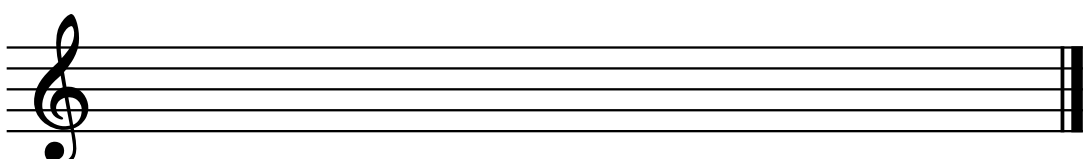
A musical staff in treble clef, empty for writing the d melodic minor scale.

a melodic minor



A musical staff in bass clef, empty for writing the a melodic minor scale.

d natural minor



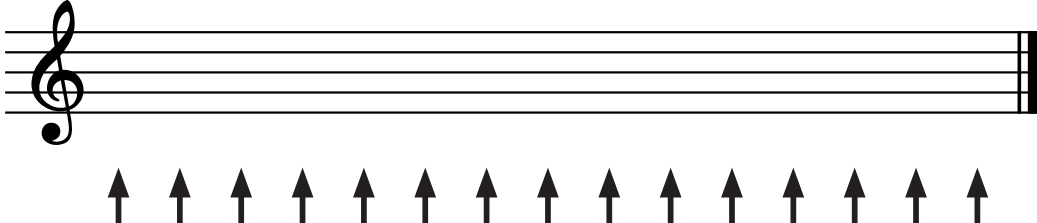
A musical staff in treble clef, empty for writing the d natural minor scale.

Theory Level 6 – Scale Writing

B-flat, D Major and b, g minor

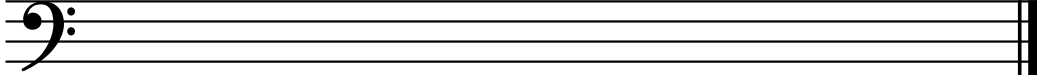
Draw the scales one octave ascending (going up) and descending (going down). Use the arrows as a guide for note spacing. Use whole notes. Use accidentals as needed. Do not use a key signature.

b natural minor



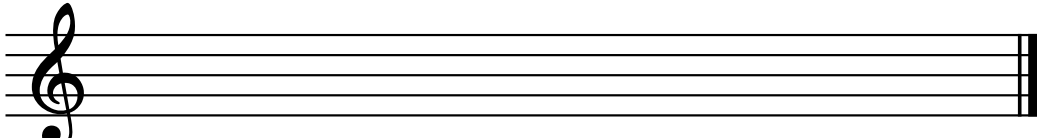
A musical staff with a treble clef. Below the staff are 14 upward-pointing arrows, indicating the spacing for an ascending scale. The staff is otherwise empty.

g harmonic minor



An empty musical staff with a bass clef.

g melodic minor



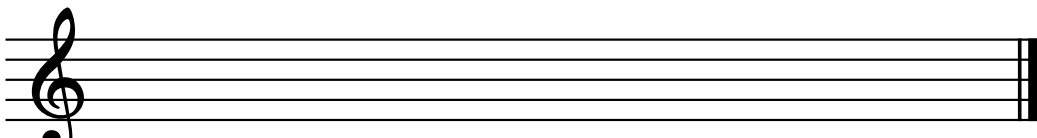
An empty musical staff with a treble clef.

b harmonic minor



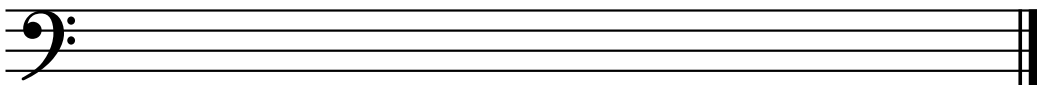
An empty musical staff with a bass clef.

g natural minor



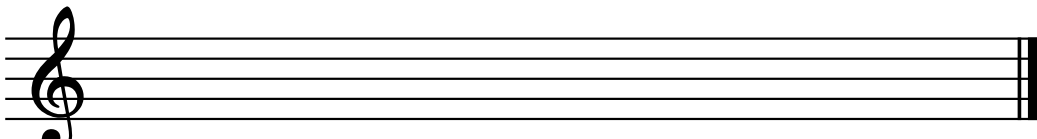
An empty musical staff with a treble clef.

b melodic minor



An empty musical staff with a bass clef.

B-flat Major



An empty musical staff with a treble clef.

D Major




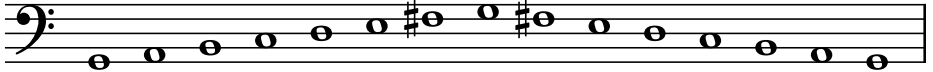
An empty musical staff with a bass clef.

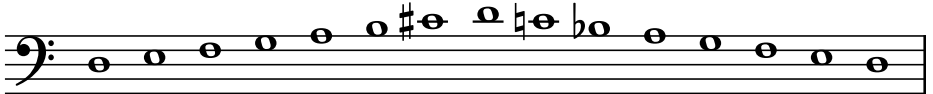
Theory Level 6 – Scale Identification Set 1

Write the name of each scale. Include Major, natural minor, harmonic minor, or melodic minor in your answer.

_____ 

_____ 


_____ 


_____ 

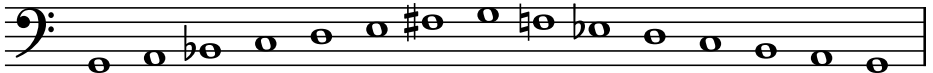
_____ 

_____ 

_____ 

_____ 

_____ 

_____ 


Theory Level 6 – Scale Identification Set 2

Write the name of each scale. Include Major, natural minor, harmonic minor, or melodic minor in your answer.

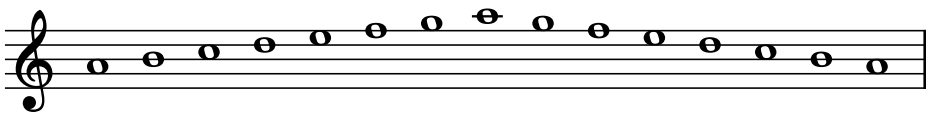
_____ 

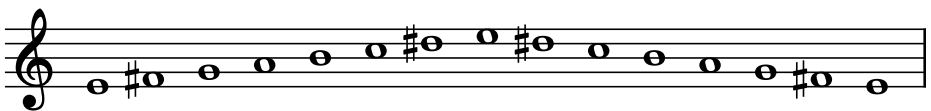
_____ 

_____ 

_____ 

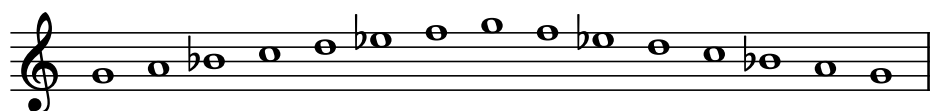
_____ 

_____ 

_____ 

_____ 

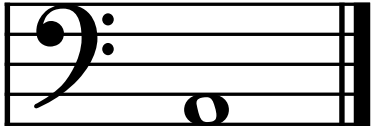
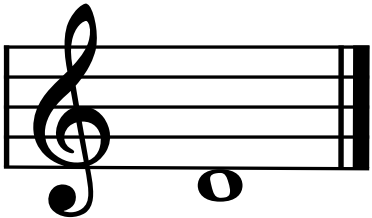
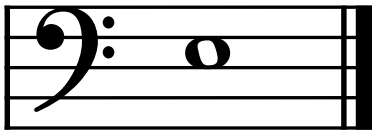
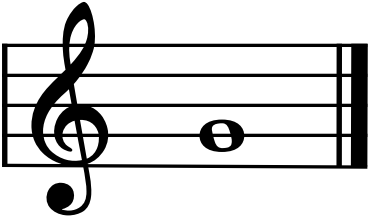
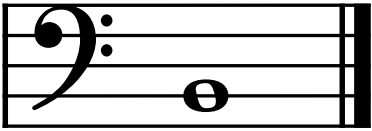
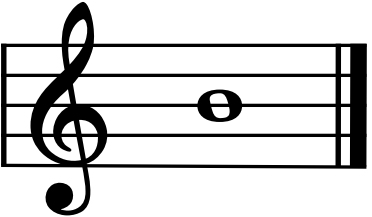
_____ 

_____ 

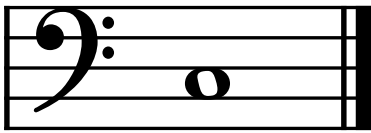
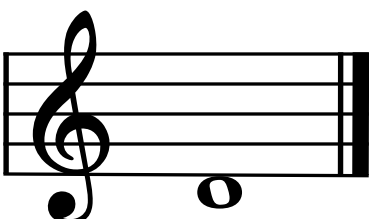
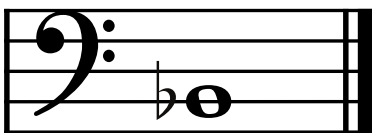
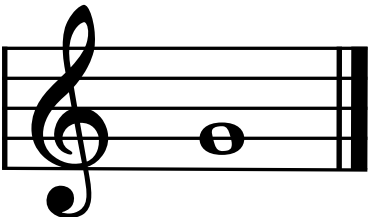

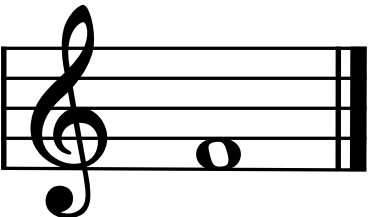
Theory Level 6 – Triad Writing

C, G, F, D, B-flat Major and a, e, d, b, g minor

Complete the **minor** triads above the given root using whole notes. Use accidentals as needed.

Complete the **Major** triads above the given root using whole notes. Use accidentals as needed.

Theory Level 6 – Music Symbol Drawing

Draw the correct music symbol in each box. Then write the number of beats each box containing notes would receive in 4/4 time on the line below.

Sharp

Single eighth note

Flat

Two eighth notes beamed

Octave sign

Accent

Dotted quarter note

Eighth rest

Whole rest

Half rest

Dotted half note

Two sixteenth notes beamed

Fortissimo

Natural

Four sixteenth notes beamed

Pianissimo

Crescendo

Fermata

Bass clef

Eighth-note triplet

Theory Level 6 – Terms and Definitions

Match the terms with the definitions. Write the letter of the correct definition on the blank line.

- | | |
|----------------------------|--|
| _____ eighth-note triplet | A. A slow tempo, slower than Andante |
| _____ marcato | B. With |
| _____ enharmonic | C. With spirit |
| _____ adagio | D. Sweetly |
| _____ dolce | E. Scale degree one |
| _____ dominant | F. Scale degree four |
| _____ tonic triad I | G. Scale degree five |
| _____ subdominant triad IV | H. Used to represent chords in music; upper case = Major, lower case = minor |
| _____ giocoso | I. Major triad built on scale degree one |
| _____ poco a poco | J. Minor triad built on scale degree one |
| _____ roman numerals | K. Major triad built on scale degree four |
| _____ subdominant triad iv | L. Minor triad built on scale degree four |
| _____ con | M. Major triad built on scale degree five |
| _____ subdominant | N. Notes spelled differently but sound the same |
| _____ con spirito | O. Joyful or playful |
| _____ tonic triad i | P. Marked, emphasized |
| _____ tonic | Q. Little by little |
| _____ dominant triad V | R. Three eighth notes played in the same time of one quarter note |