

Written Test = 2 points each question

OMTA THEORY LEVEL ONE – PIANO

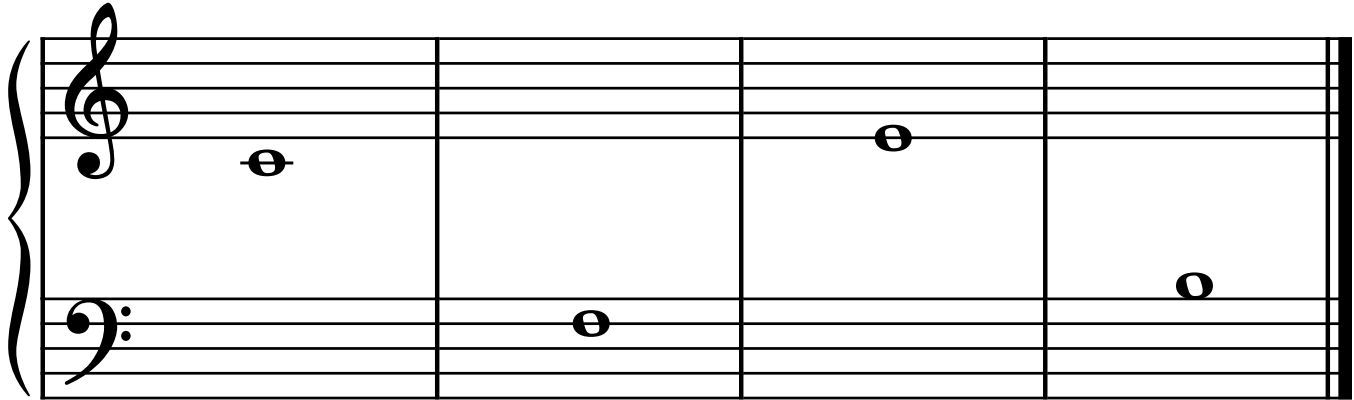
Student's Name KEY

Teacher's Name _____

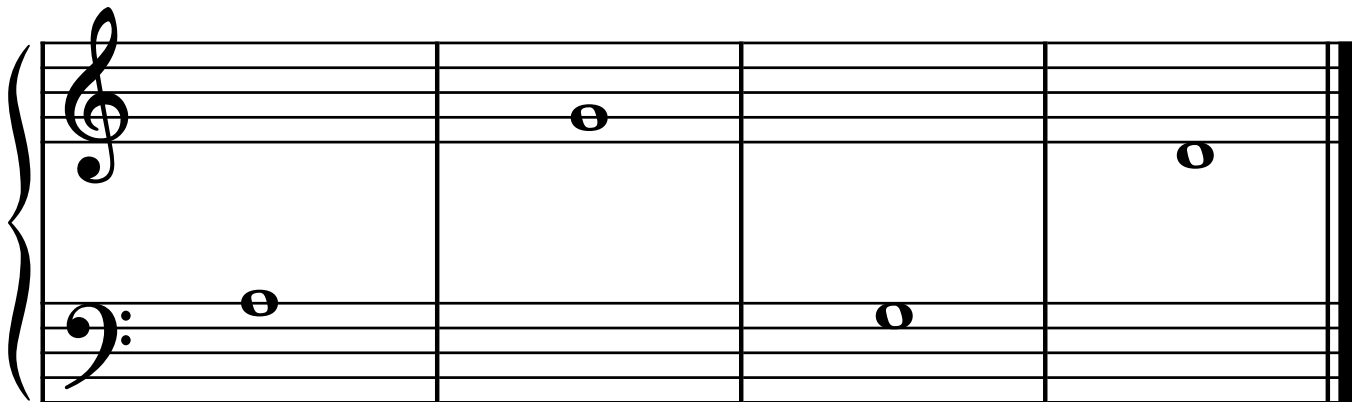
Written Score	90
Aural Score	10
TOTAL SCORE	100

Test code: Clara Schumann

Write the letter name of each note on the line below.



 C F E B



 A G G D

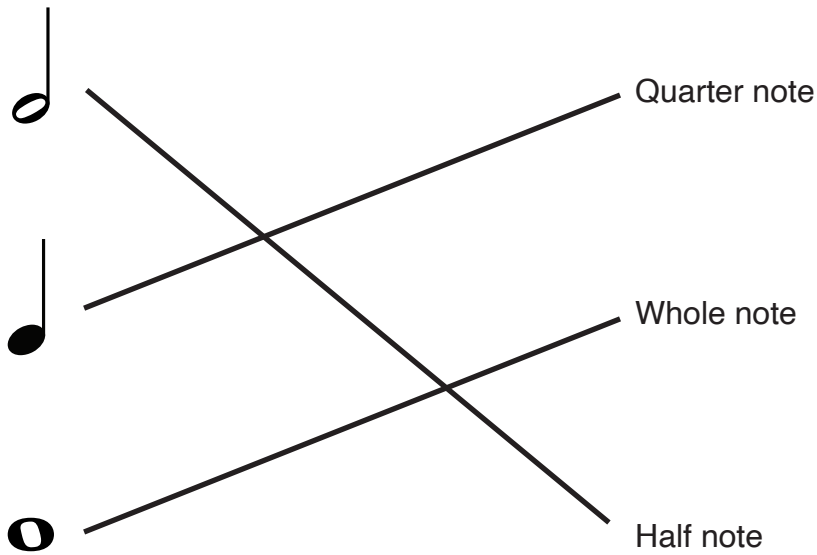
Complete the music alphabet.

A B C D E F G
(2 pts.) (2 pts.)

TURN TO THE NEXT PAGE

OMTA THEORY LEVEL ONE — PIANO

Draw a line from each note to its name.



In the time signature $\frac{2}{4}$, there are 2 beat(s) in each measure.

In the time signature $\frac{3}{4}$, there are 3 beat(s) in each measure.

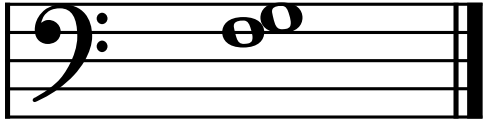
In the time signature $\frac{4}{4}$, there are 4 beat(s) in each measure.

The 4 on the bottom of the time signatures $\frac{2}{4}$, $\frac{3}{4}$, and $\frac{4}{4}$ tells us that the quarter note receives 1 beat(s).

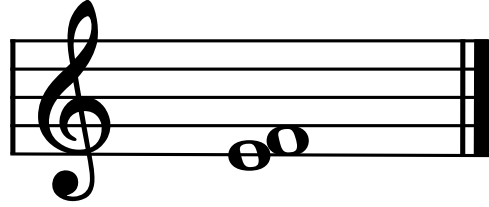
TURN TO THE NEXT PAGE

OMTA THEORY LEVEL ONE – PIANO

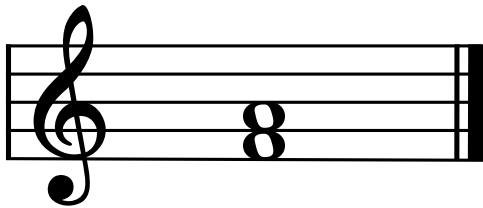
Do these notes step or skip?



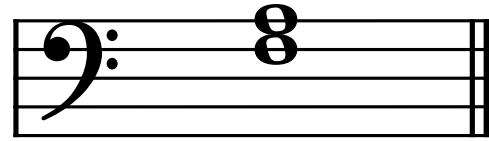
step



step

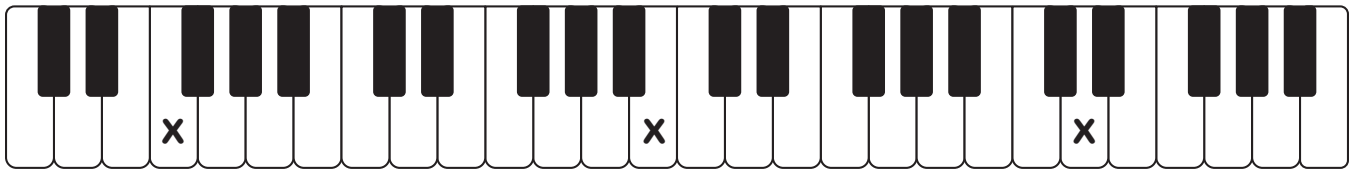


skip



skip

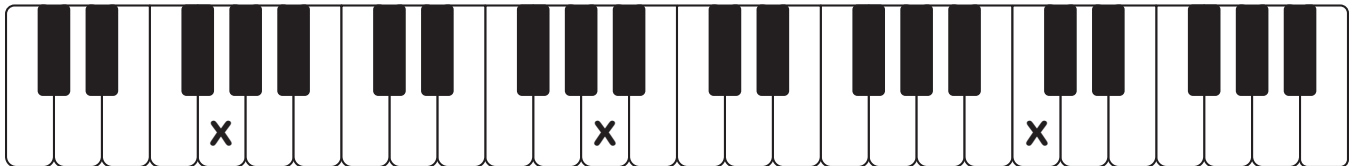
On the lines below, write the letter name of each key marked on the keyboard.



F

B

D



G

A

C

OMTA THEORY LEVEL ONE — PIANO

Match the terms with the definitions. Write the letter of the correct definition on the blank line.

Terms

 G repeat sign

 A step

 I bar line

 E staccato

 C dynamics

 H measure

 D piano, *p*

 B staff

 J legato

 K double bar line

 L time signature

 F skip

Definitions

A. From a line to a space or a space to a line on the staff

B. Five lines and four spaces

C. How loudly or softly to play music

D. Soft

E. A dot placed above or below a note head telling us to play separated or disconnected

F. From a line to a line or a space to a space on the staff

G. Two bar lines close together with two dots meaning to "play again"

H. The space between two bar lines

I. A line dividing the staff into measures

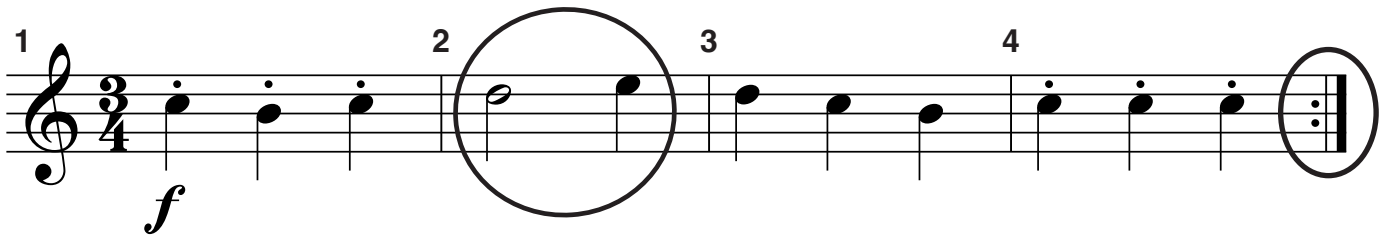
J. To play smoothly, connected

K. Two bar lines close together meaning the end of a piece of music

L. Two numbers, one placed on top of the other, at the beginning of a piece of music

OMTA THEORY LEVEL ONE – PIANO

Use the music example below to answer the following questions. The measures are numbered. Circle the correct answer or fill in the blank for each question.



What is the name of the dynamic marking in measure 1?

Forte

Fast

Piano

How many beats are in each measure of the music example? 3

Are the notes circled in measure 2 a step or a skip?

Step

Skip

How should the quarter notes in measure 1 be played?

Legato

Staccato

Which symbol is circled in measure 4?

Repeat sign

Double bar line

Bar line

The music example is written in which clef?

Treble clef

Bass clef

END OF WRITTEN EXAM

Aural Test = 1 point each question

OMTA AURAL AWARENESS LEVELS 1 & 2

Aural Score

10

1. Staccato

Legato

2. Higher

Lower

3. Same

Different

4. Forte

Piano

5. High

Low

6. Staccato

Legato

7. Higher

Lower

8. Going Higher

Going Lower

9. Higher

Lower

10. Going Higher

Going Lower

END OF AURAL AWARENESS EXAM