

Written Test = 2 points each question

OMTA THEORY LEVEL 3 – PIANO

Student's Name KEY

Teacher's Name _____

Written Score	90
Aural Score	10
TOTAL SCORE	100

Test code: Clara Schumann

Write the letter name of each note on the line below.

 D G C A B E

Draw the notes on the staff. Use whole notes.

G

F

C

Write the name of the Major key shown by each key signature.

 G Major
(g)

 F Major
(f)

 C Major
(c)

TURN TO THE NEXT PAGE

OMTA THEORY LEVEL 3 — PIANO

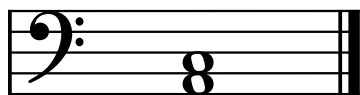
Circle the correct pattern of whole steps and half steps used in a Major scale.

W W H H W W W

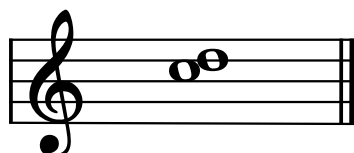
W W H W W W H

W H W H W W W

Label the intervals as a second (2nd) or third (3rd).



third (3rd)



second (2nd)

Fill in each blank with the correct word from the word list.

WORD LIST

key signature

sharp

accidental

flat

A sharp, flat, or natural sign used in front of a note accidental

Lowers a note one half step flat

Raises a note one half step sharp

Sharps or flats in a specific order and pattern after a clef sign key signature

OMTA THEORY LEVEL 3 — PIANO

Match the terms with the definitions. Write the letter of the correct definition on the blank line.


TERMS

 B root

 E octave


 G triad

 F natural

 D diminuendo (dim. )

 H chord

 C fermata

 A crescendo (cresc. )

DEFINITIONS

A. To play gradually louder

B. The note in any chord that gives the chord its name

C. To hold a note or rest for extra value

D. To play gradually softer

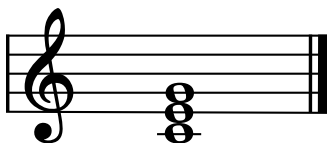
E. An interval of eight notes

F. Cancels a sharp or a flat

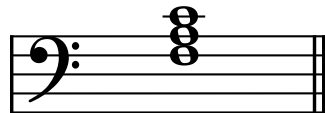
G. Chord of three tones, consisting of a root, 3rd, and 5th above the root

H. Three or more tones sounding together

Name the Major triads.



 C Major
(c)



 F Major
(f)

TURN TO THE NEXT PAGE

OMTA THEORY LEVEL 3 – PIANO

Use the music example below to answer the following questions. The measures are numbered. Circle the correct answer or fill in the blank for each question.

The time signature for the music example indicates there are 3 beats in each measure.

The music example is written in which clef?

Treble clef

Bass clef

What is the definition of the dynamic marking below measure 1?

Loud

Medium loud

Mega loud

What is the interval between the notes circled in measures 3-4?

2nd

3rd

What is the key of the music example?

F Major

G Major

C Major

What is the definition of the word loco above measure 3?

To play crazily

To play gradually faster

In the written octave

The octave sign above measures 1 and 2 means the notes should be played?

One octave higher

One octave lower

END OF WRITTEN EXAM

Aural Test = 1 point each question

OMTA AURAL AWARENESS LEVELS 3 & 4

Aural Score

10

1. Same Different
2. Piano Forte
3. Higher Lower
4. Staccato Legato
5. High Low
6. Staccato Legato
7. Higher Lower
8. Gradually louder Gradually softer
9. Second Third
10. Higher Lower

END OF AURAL AWARENESS EXAM