

\*Written Test = 2 points each question\*

## OMTA THEORY LEVEL 4 – PIANO

Student's Name KEY

Teacher's Name \_\_\_\_\_

Written Score	90
Aural Score	10
<b>TOTAL SCORE</b>	<b>100</b>

Test code: Clara Schumann

Write the letter name of each note on the line below. Use accidentals as needed.

\_\_\_\_\_

B      Gb      C#      F      E      D

Draw the notes on the staff. Use whole notes.

A

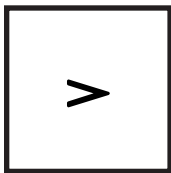
E

G

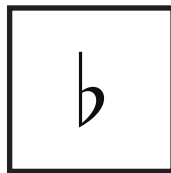
F

Draw the correct symbol in each box.

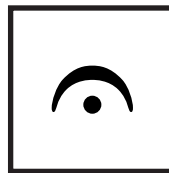
Accent



Flat



Fermata



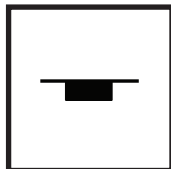
Natural



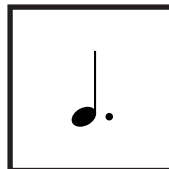
Single eighth note



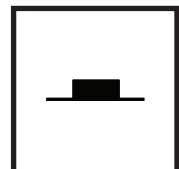
Whole rest



Dotted quarter note



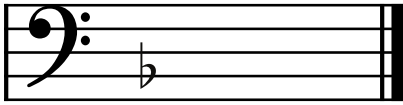
Half rest



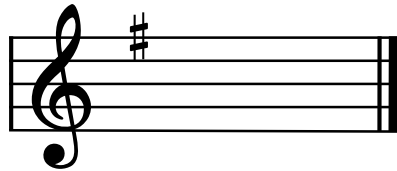
TURN TO THE NEXT PAGE

# OMTA THEORY LEVEL 4 — PIANO

Draw the correct key signature for each Major key.

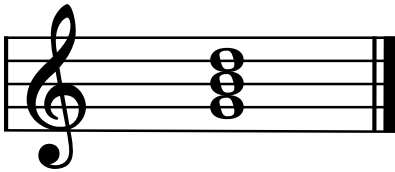


F Major

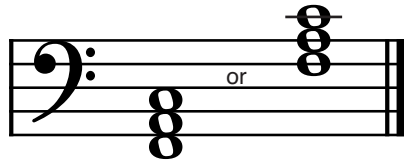


G Major

Draw the Major triads. Use whole notes.



G Major



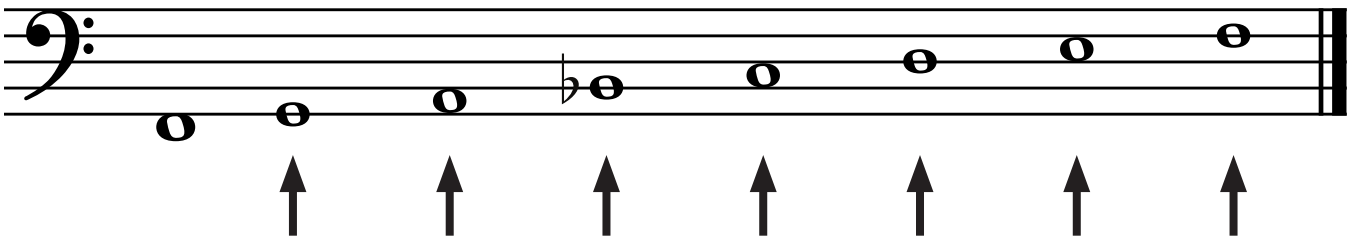
F Major

Write the pattern of whole steps and half steps used in a Major scale. Write **W** for whole step and **H** for half step.

W   W   H   W   W   W   H  
(2 pts.)

Draw a Major scale one octave going up starting with the note provided. Draw one whole note on the staff above each arrow. Use accidentals as needed. Do not use a key signature.

(2 pts.)

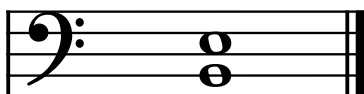


## OMTA THEORY LEVEL 4 — PIANO

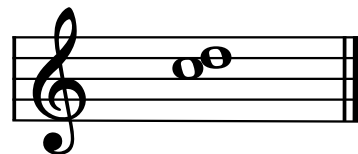
Label the intervals as a second (2nd), third (3rd), or fourth (4th).



third (3rd)

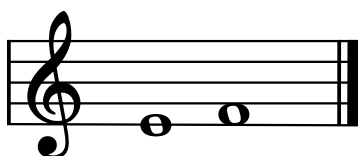


fourth (4th)

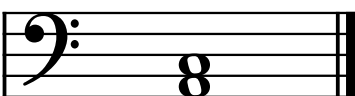


second (2nd)

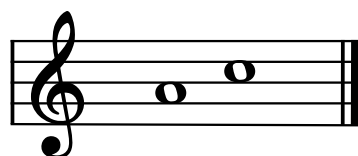
Label the intervals as harmonic or melodic.



melodic



harmonic



melodic

Match the terms with the definitions. Write the letter of the correct definition on the blank line.

### TERMS

C allegro

E andante

F tie

G slur

B fine

A contrary motion

H fermata

D parallel motion

### DEFINITIONS

A. Music moving in opposite directions

B. The end

C. A quick, fast tempo

D. Music moving in the same direction

E. A walking tempo

F. Two notes of the same pitch that are joined together by a curved line

G. A curved line over or under notes which means to play legato

H. To hold a note or rest for extra value

# OMTA THEORY LEVEL 4 – PIANO

Use the music example below to answer the following questions. The measures are numbered. Circle the correct answer or fill in the blank for each question.

Moderato

1 2 3 4 *D.C. al Fine*

The time signature for the music example tells us there are 4 beats in each measure.

What is the key of the music example?

G Major

F Major

C Major

What is the meaning of the music term above measure 4?

Use dynamic contrast

The end

Return to the beginning and play to Fine

What is the name of the accidental circled in measure 2?

Natural

Sharp

Flat

What is the meaning of the accent circled in measure 3?

Play the note louder than the notes around it

Gradually get softer

The notes circled in measure 4 are an example of a(an) \_\_\_\_\_.

Tie

Octave

Triad

What is the meaning of the tempo marking?

A moderate tempo

A quick, fast tempo

A slow tempo

END OF WRITTEN EXAM

\*Aural Test = 1 point each question\*

## OMTA AURAL AWARENESS LEVELS 3 & 4

Aural Score

10

1. Same Different
2. Piano Forte
3. Higher Lower
4. Staccato Legato
5. High Low
6. Staccato Legato
7. Higher Lower
8. Gradually louder Gradually softer
9. Second Third
10. Higher Lower

END OF AURAL AWARENESS EXAM