

Theory Level 11 – Note Naming Review

Write the letter name of each note on the line below. Do not use enharmonic spellings. Use accidentals as needed.

A musical staff with a grand staff (treble and bass clefs). The notes are: Treble clef, 4th line (G); Bass clef, 2nd space (D); Treble clef, 3rd space (F); Bass clef, 4th space (A); Treble clef, 5th line (C); Bass clef, 5th space (G).

#-o

o

A musical staff with a grand staff (treble and bass clefs). The notes are: Treble clef, 4th line (G#); Bass clef, 3rd space (F#); Treble clef, 3rd space (F); Bass clef, 3rd space (F#); Treble clef, 4th line (G); Bass clef, 4th space (A).

o

A musical staff with a grand staff (treble and bass clefs). The notes are: Treble clef, 3rd space (F#); Bass clef, 3rd space (F#); Treble clef, 4th line (G); Bass clef, 3rd space (F); Treble clef, 4th line (G); Bass clef, 4th space (A).

o

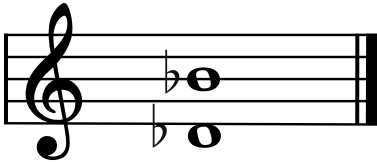
Theory Level 11 – Time Signature Identification

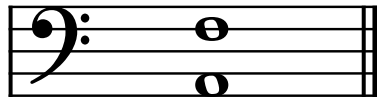
Draw the correct time signature for each music example.

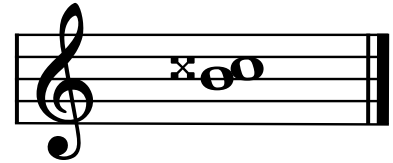


Theory Level 11 – Interval Identification

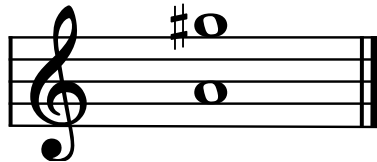
Label the intervals. Use Major, minor, Perfect, Augmented, or diminished in the answer.

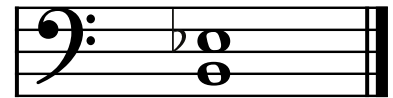


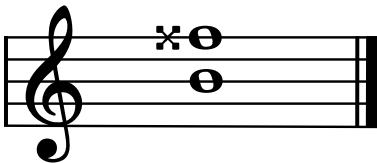




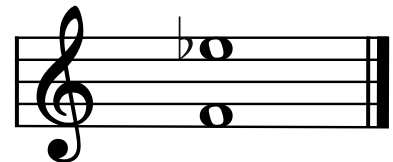




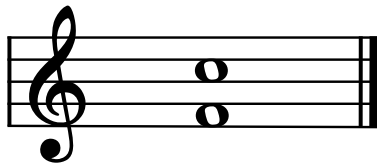


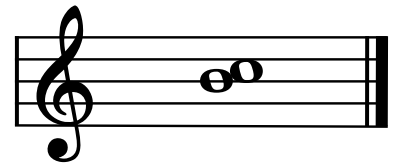






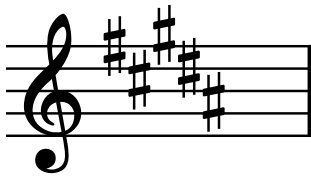






Theory Level 11 – Key Signature Identification

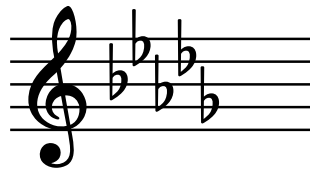
Write the name of the Major or minor key shown by each key signature.



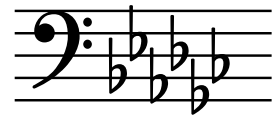
_____ minor



_____ minor



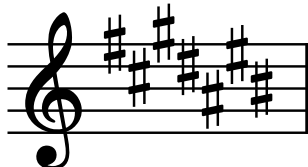
_____ minor



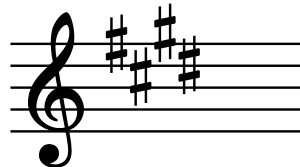
_____ Major



_____ Major



_____ Major



_____ minor



_____ minor



_____ minor



_____ minor



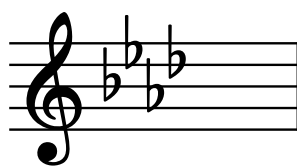
_____ Major



_____ Major



_____ minor



_____ Major



_____ Major



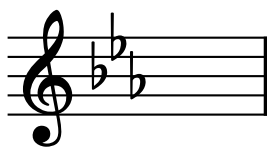
_____ Major

Theory Level 11 – Key Signature Identification Review

Write the name of the Major or minor key shown by each key signature.



_____ Major



_____ minor



_____ Major



_____ Major



_____ Major



_____ minor



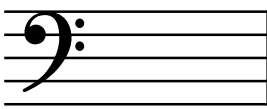
_____ minor



_____ Major



_____ minor



_____ Major



_____ minor



_____ minor



_____ Major



_____ minor



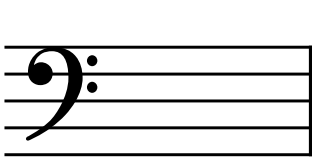
_____ minor



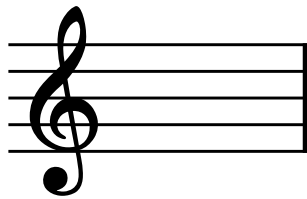
_____ Major

Theory Level 11 – Key Signature Writing

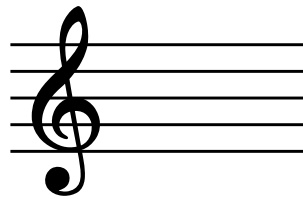
Draw the correct key signature for each Major or minor key.



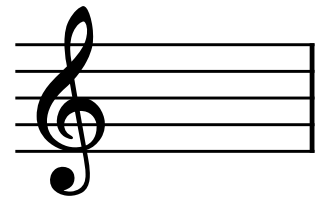
C-flat Major



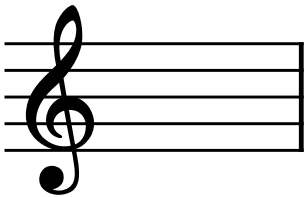
G-flat Major



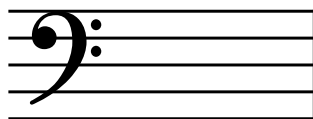
F-sharp Major



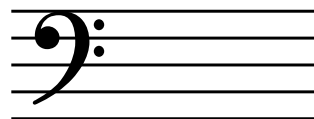
c-sharp minor



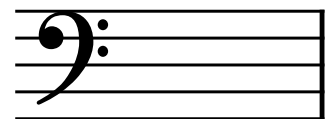
B Major



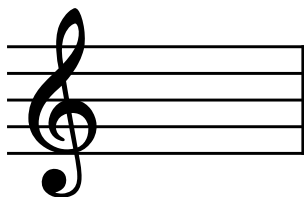
D-flat Major



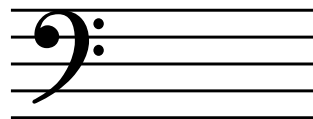
E Major



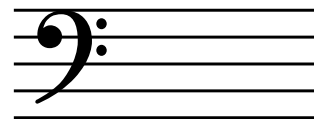
g-sharp minor



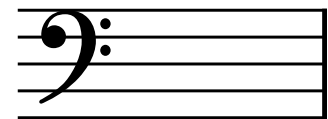
b-flat minor



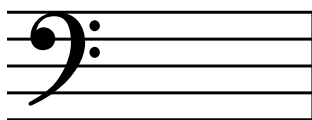
f minor



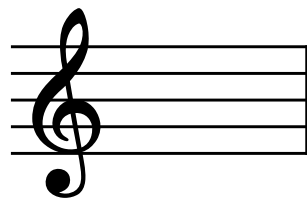
C-sharp Major



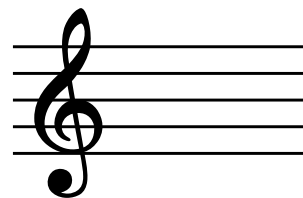
e-flat minor



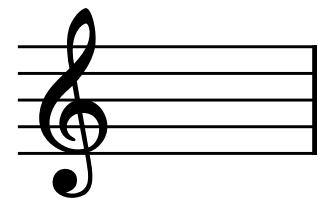
a-sharp minor



A-flat Major



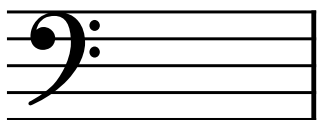
a-flat minor



d-sharp minor

Theory Level 11 – Key Signature Writing Review

Draw the correct key signature for each Major or minor key.



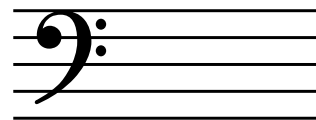
A Major



e minor



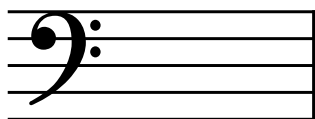
E-flat Major



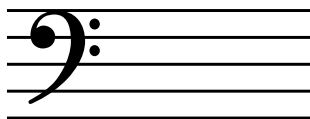
G Major



g minor



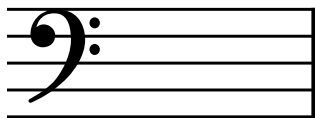
D Major



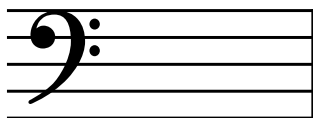
C Major



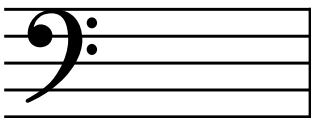
b minor



c minor



F Major



f-sharp minor



c minor



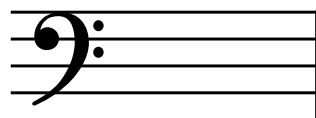
d minor



B-flat Major



a minor



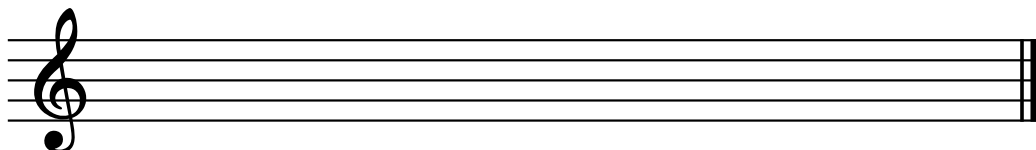
E-flat Major

Theory Level 11 – New Scale Practice

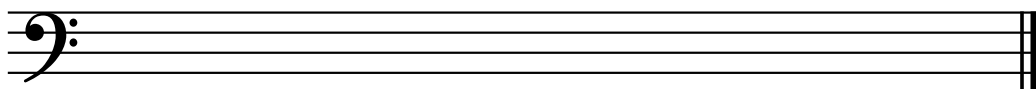
C-sharp, C-flat Major and a-sharp, a-flat minor

Draw the scales one octave ascending and descending. Use whole notes. Use accidentals as needed. Do not use a key signature.

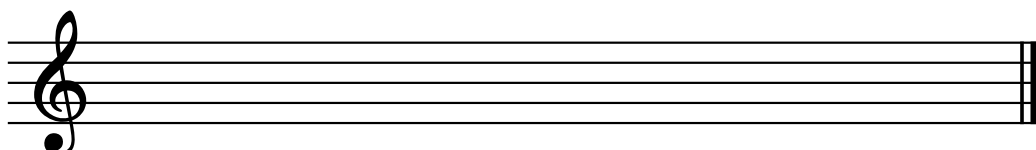
a-sharp
natural minor



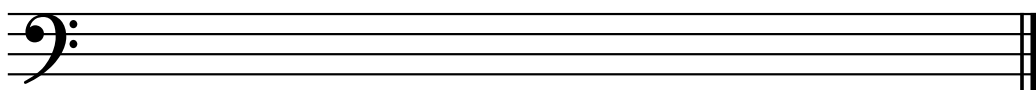
a-flat harmonic minor



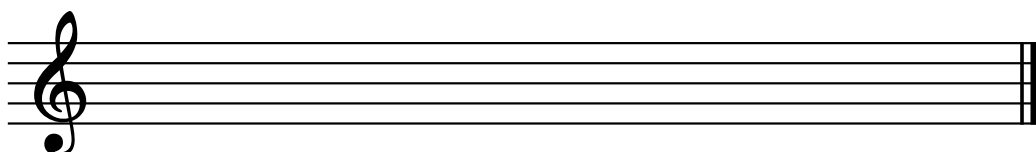
a-sharp
melodic minor



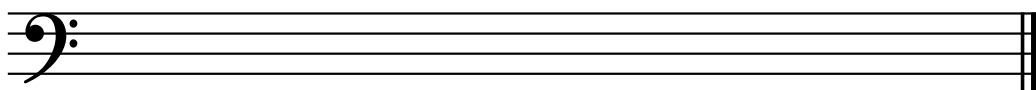
a-flat natural minor



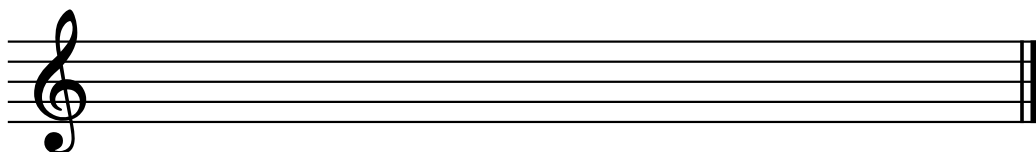
a-sharp
harmonic minor



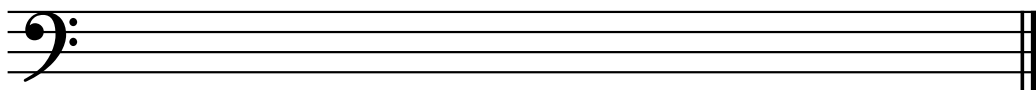
a-flat melodic minor



C-flat Major



C-sharp Major



Theory Level 11 – Scale Identification

Write the name of each scale. Include Major, natural minor, harmonic minor, or melodic minor in your answer.

_____ 

_____ 

_____ 

_____ 

_____ 

_____ 

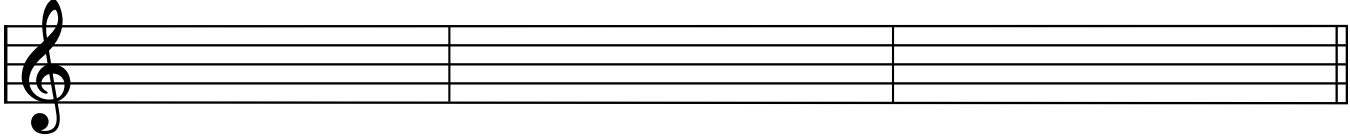
_____ 

_____ 

Theory Level 11 – Tonic, Subdominant, Dominant 7th

Draw root position chords in each given key using whole notes. Use accidentals as needed. Do not draw a key signature.

G \flat Major

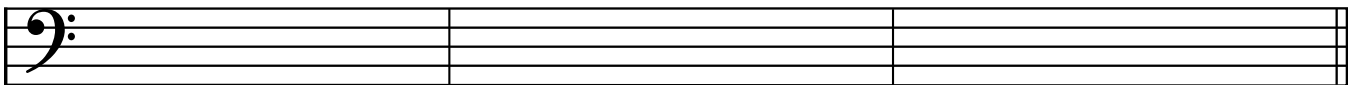


Tonic

Subdominant

Dominant seventh

b \flat minor

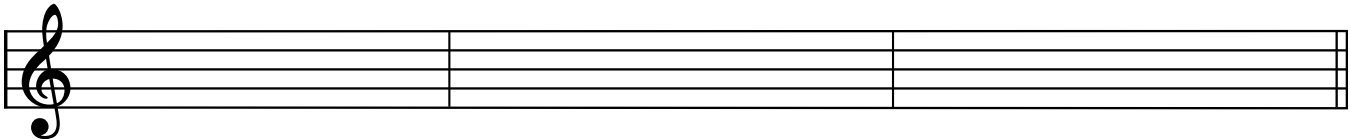


Tonic

Subdominant

Dominant seventh

E Major

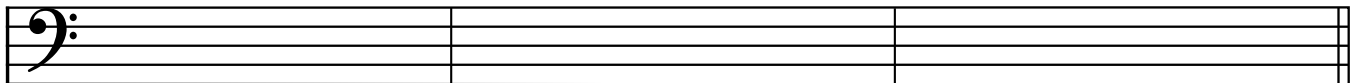


Tonic

Subdominant

Dominant seventh

f minor

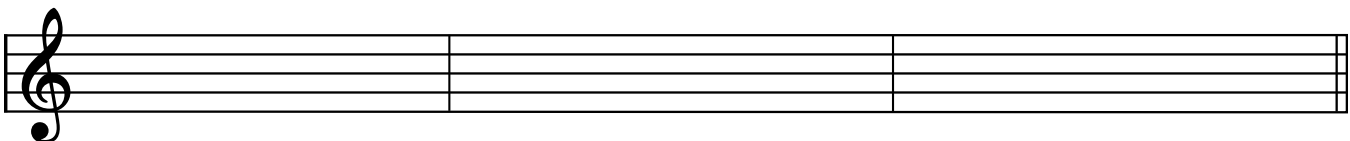


Tonic

Subdominant

Dominant seventh

E \flat Major



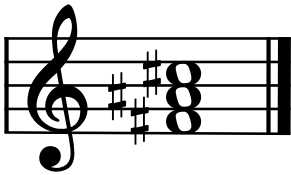
Tonic

Subdominant

Dominant seventh

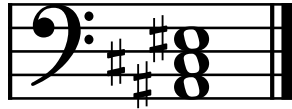
Theory Level 11 – Triad Identification

On the blank lines, write the root of each triad and circle whether the triad is Major or minor.



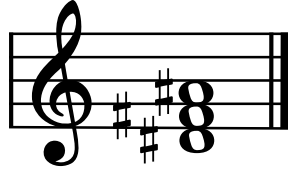
Major

_____ minor



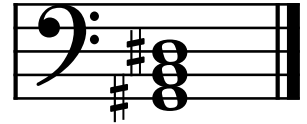
Major

_____ minor



Major

_____ minor



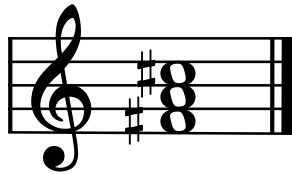
Major

_____ minor



Major

_____ minor



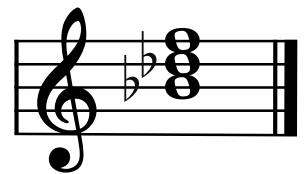
Major

_____ minor



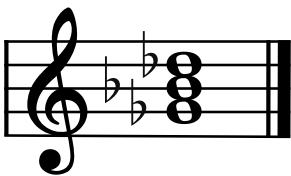
Major

_____ minor



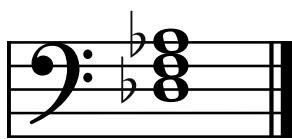
Major

_____ minor



Major

_____ minor



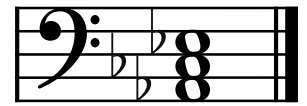
Major

_____ minor



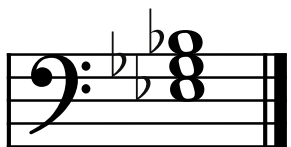
Major

_____ minor



Major

_____ minor



Major

_____ minor



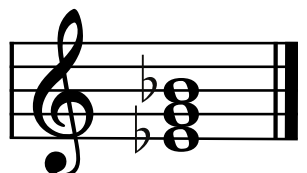
Major

_____ minor



Major

_____ minor



Major

_____ minor

Theory Level 11 – Music Symbol Drawing

Draw the correct music symbol in each box.

Trill

Ad libitum

Portato

Sforzando

Double sharp

Dotted eighth rest

Thirty-second rest

Dotted sixteenth rest

Double-dotted quarter rest

Tre corde

Augmented chord symbol

Two sixteenth notes beamed

Dotted sixteenth note

Thirty-second note

Quarter-note triplet

Accent

Opus

Glissando

Diminished chord symbol

Tenuto

Theory Level 11 – Terms and Definitions

Fill in each blank with the correct word from the word list.

Word List

a cappella
alberti bass
arpeggio
alla breve

assai
calando
chord quality
con fuoco

deceptive cadence
half cadence
diminished intervals
diminished triad

l'istesso tempo
largo
scherzando
Trill

- _____ Playing notes of a chord consecutively in a harp-like manner
- _____ An accompaniment pattern using a broken three-note chord played bottom-top-middle-top
- _____ When the dominant chord (V) resolves to a chord other than the tonic (I), usually V-vi or V-VI
- _____ Unaccompanied
- _____ Alternation of two notes a second apart
- _____ Playful
- _____ Is determined by the intervals between the notes in a chord
- _____ A minor triad with the fifth lowered one half step
- _____ Time signature indicating two beats to the measure with a half note receiving one beat
- _____ Becoming softer and slower
- _____ Very
- _____ Perfect or minor intervals decreased by a half step
- _____ Very slow
- _____ The same tempo
- _____ Any cadence which ends on V
- _____ With fire