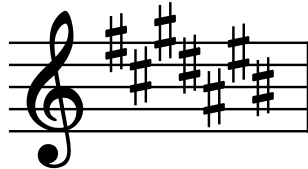


Theory Level 12 – Key Signature Identification Review

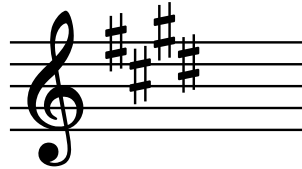
Write the name of the Major or minor key shown by each key signature.



_____ Major



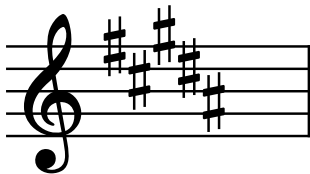
_____ Major



_____ minor



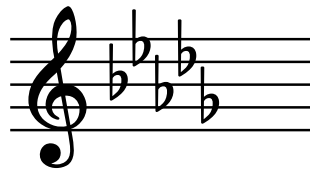
_____ minor



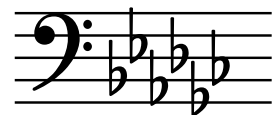
_____ minor



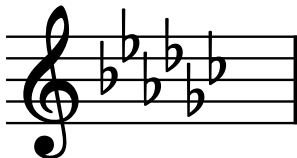
_____ minor



_____ minor



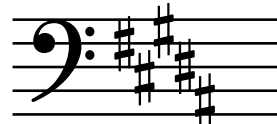
_____ Major



_____ minor



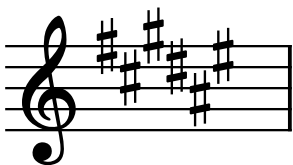
_____ minor



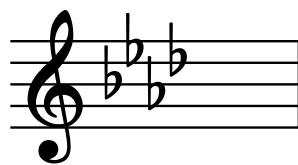
_____ Major



_____ Major



_____ minor



_____ Major



_____ Major



_____ Major

Theory Level 12 – Key Signature Identification Review

Write the name of the Major or minor key shown by each key signature.



_____ Major



_____ minor



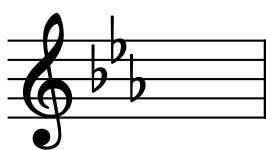
_____ minor



_____ Major



_____ Major



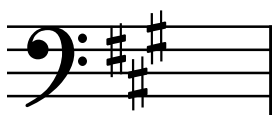
_____ minor



_____ Major



_____ Major



_____ Major



_____ minor



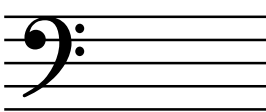
_____ minor



_____ Major



_____ minor



_____ Major



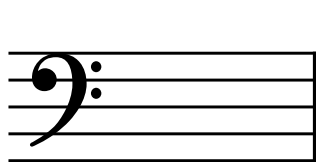
_____ minor



_____ minor

Theory Level 12 – Key Signature Writing Review

Draw the correct key signature for each Major or minor key.



C-flat Major



G-flat Major



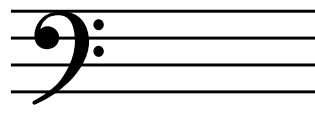
F-sharp Major



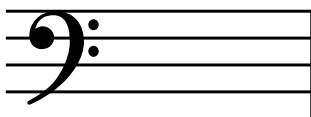
c-sharp minor



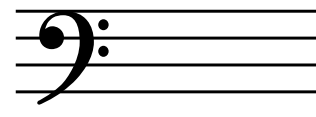
B Major



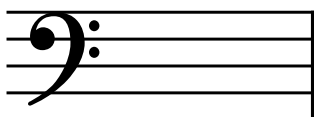
D-flat Major



E Major



g-sharp minor



A-flat Major



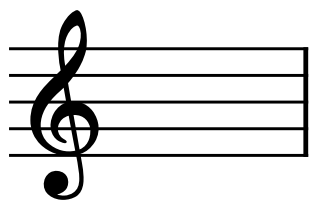
A-flat Major



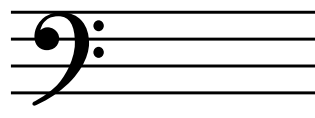
a-flat minor



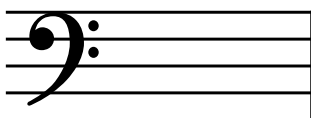
d-sharp minor



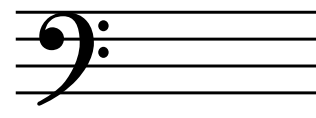
b-flat minor



f minor



C-sharp Major



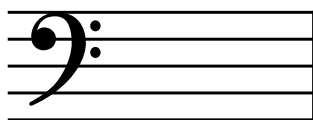
e-flat minor

Theory Level 12 – Key Signature Writing Review

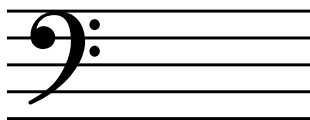
Draw the correct key signature for each Major or minor key.



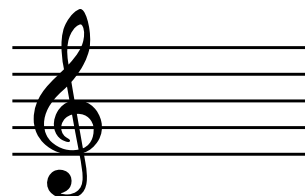
g minor



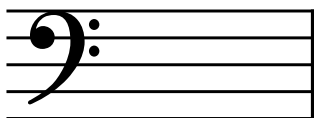
D Major



C Major



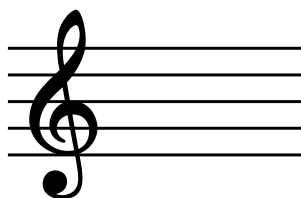
b minor



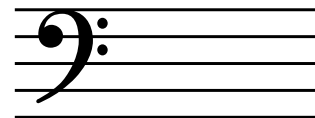
A Major



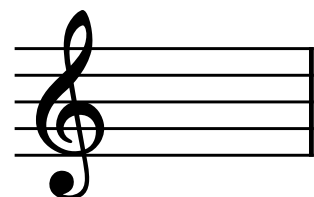
e minor



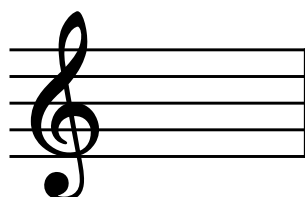
E-flat Major



G Major



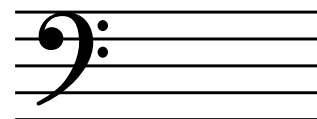
d minor



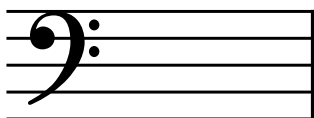
B-flat Major



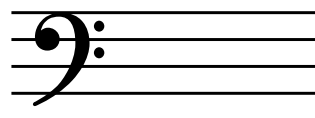
a minor



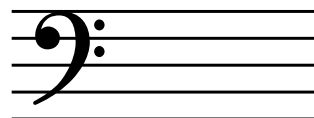
E-flat Major



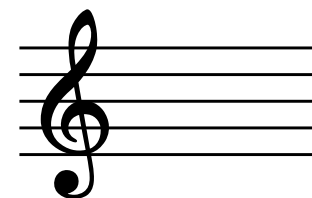
c minor



F Major



f-sharp minor

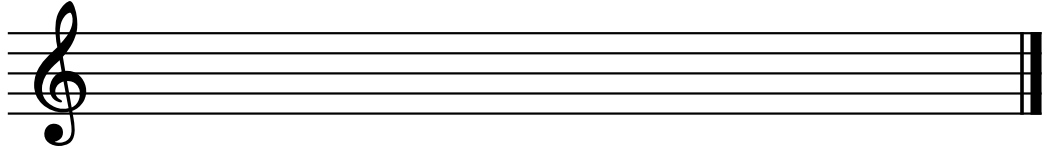


C Major

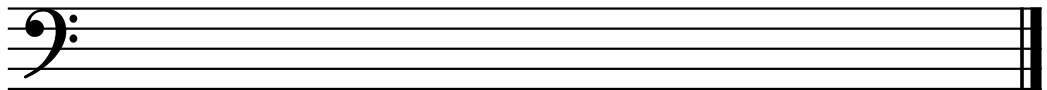
Theory Level 12 – Scale Writing Review Page 1

Draw the scales one octave ascending and descending. Use whole notes. Use accidentals as needed. Do not use a key signature.

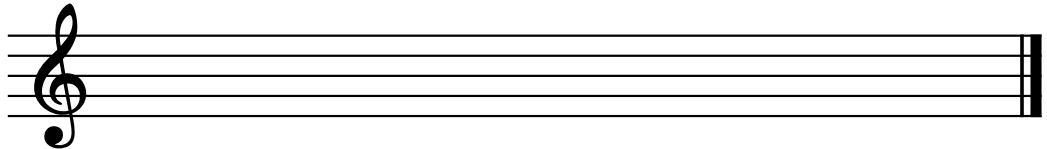
c natural minor



C-sharp Major



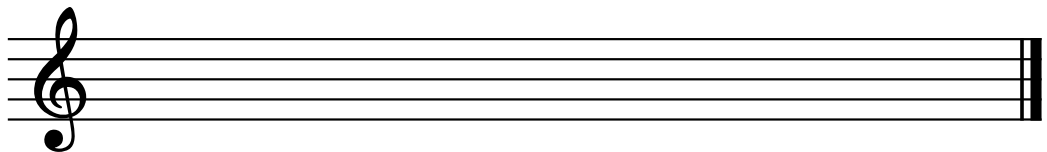
b-flat harmonic minor



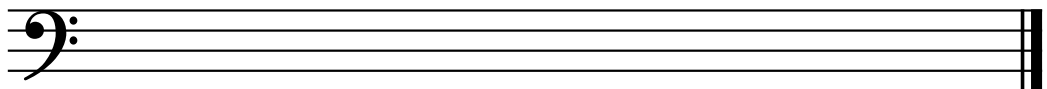
D-flat Major



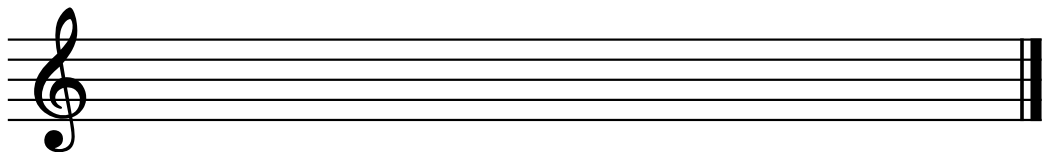
a-sharp harmonic minor



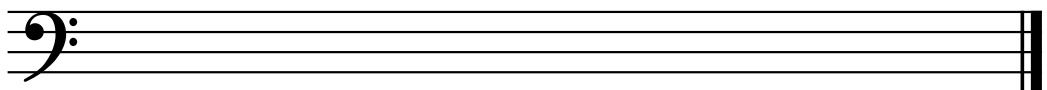
a-flat melodic minor



C-flat Major



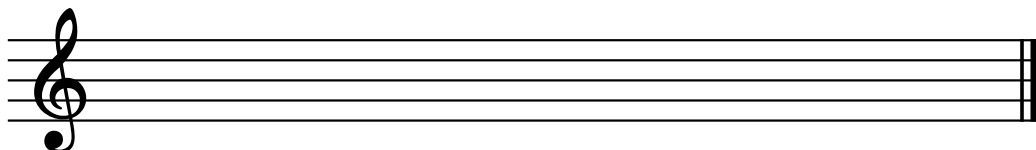
B Major



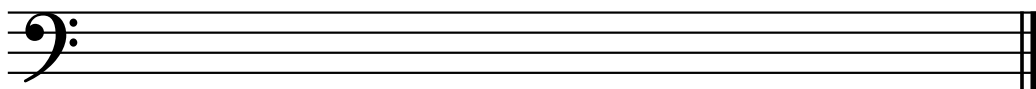
Theory Level 12 – Scale Writing Review Page 2

Draw the scales one octave ascending and descending. Use whole notes. Use accidentals as needed. Do not use a key signature.

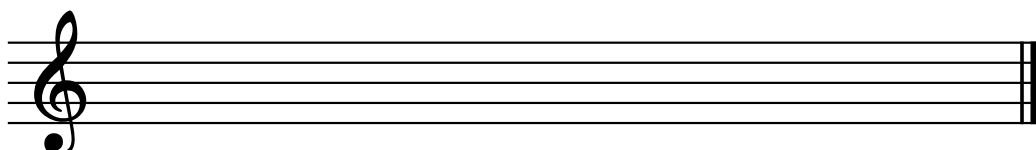
C-sharp melodic minor



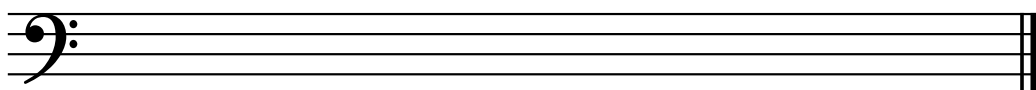
A-flat Major



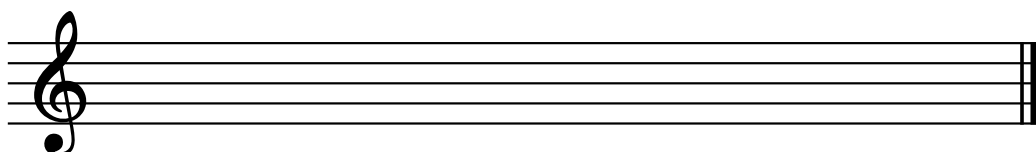
f-sharp melodic minor



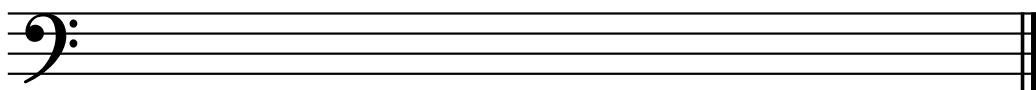
E-flat Major



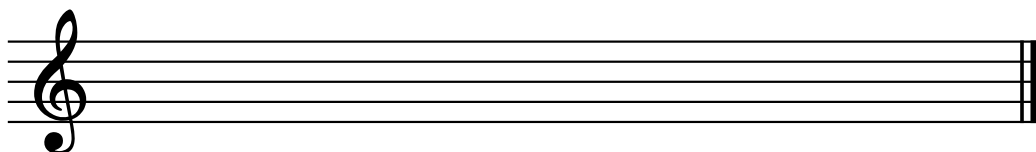
G-flat Major



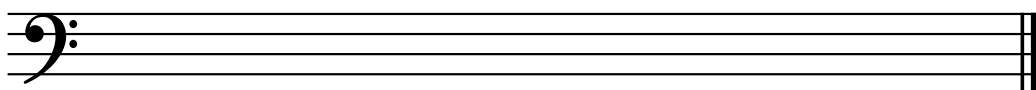
d-sharp natural minor



g harmonic minor

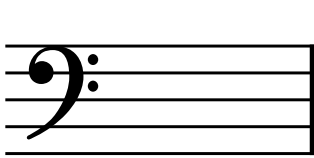


f melodic minor

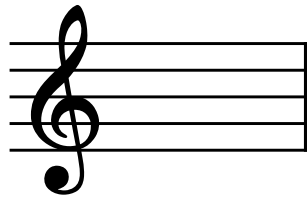


Theory Level 12 – Triad Writing

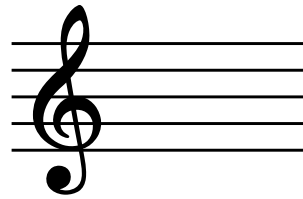
Draw each triad in root position.



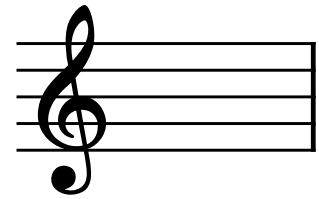
e-flat minor



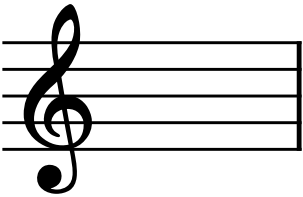
g-flat diminished



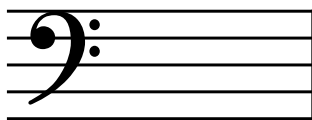
F-sharp Major



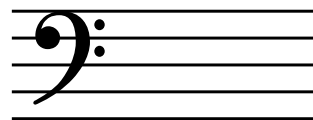
C Augmented



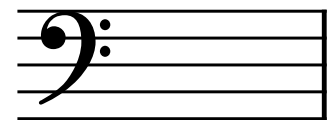
b diminished



D-flat Major



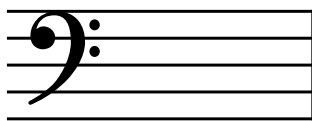
E Major



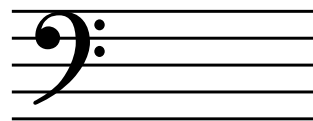
G Augmented



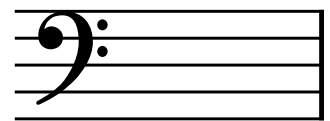
B-flat Minor



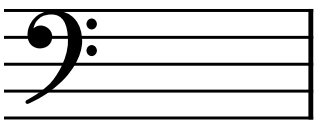
f minor



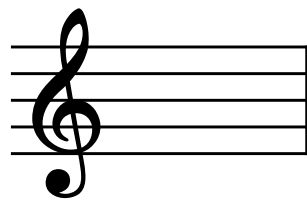
f-sharp diminished



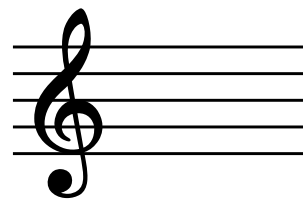
e-flat minor



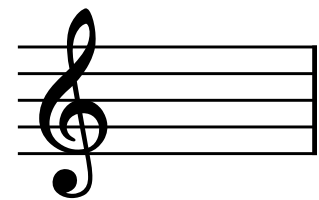
a-flat minor



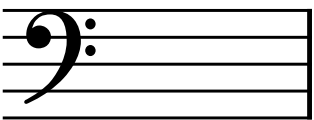
A-flat Major



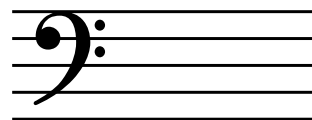
c diminished



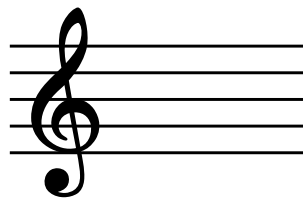
d-sharp minor



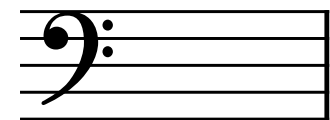
B-flat Augmented



D Major



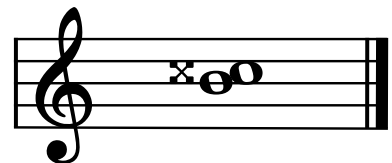
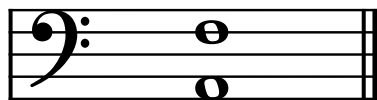
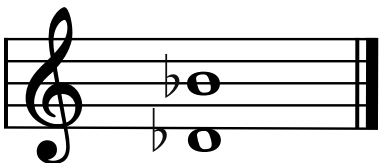
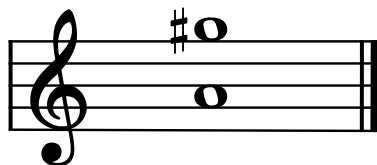
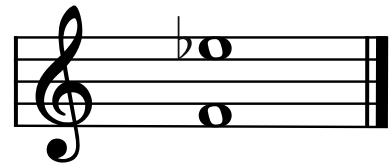
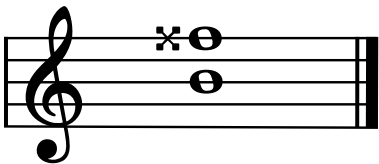
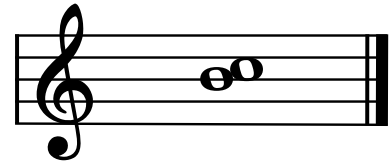
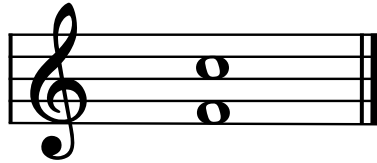
E Augmented



d minor

Theory Level 12 – Interval Review

Label the intervals. Use Major, minor, Perfect, Augmented, or diminished in the answer.



Theory Level 12 – Rhythms

Draw one note under the arrow to complete each measure in the given time signatures.

3/4

4/8

6/8

Draw one rest under the arrow to complete each measure in the given time signatures.

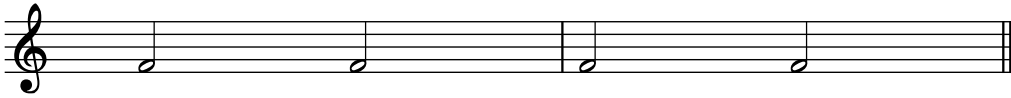
3/4

6/8

6/8

Theory Level 12 – Time Signature Identification

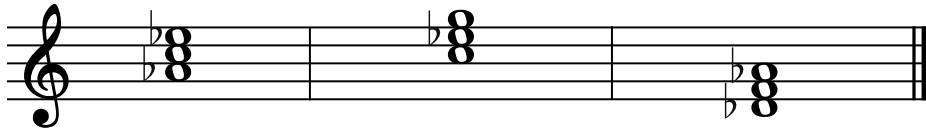
Draw the correct time signature for each music example.



Theory Level 12 – Chord Scale Degrees

In each given key, circle the correct scale degree for each chord.

A \flat Major



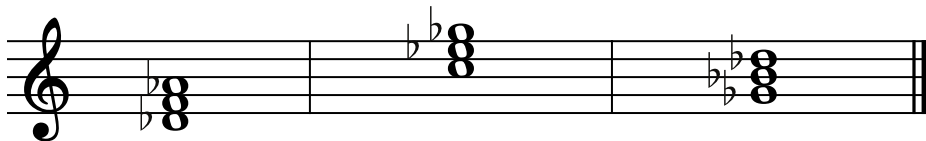
Subdominant	Submediant	Dominant
Dominant	Mediant	Subdominant
Tonic	Dominant	Supertonic

C# Major



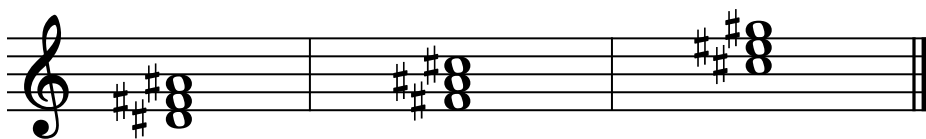
Leading tone	Tonic	Mediant
Supertonic	Dominant	Leading tone
Submediant	Subdominant	Submediant

D \flat Major



Subdominant	Leading tone	Subdominant
Tonic	Mediant	Dominant
Dominant	Dominant	Tonic

F# Major



Supertonic	Dominant	Dominant
Submediant	Subdominant	Tonic
Leading tone	Tonic	Subdominant

Theory Level 12 – Music Symbol Drawing

Draw the correct music symbol or abbreviation in each box.

Trill

Double flat

Portato

Sforzando

Double sharp

Double-dotted eighth note

Thirty-second rest

Double-dotted half note

Double-dotted quarter rest

Tre corde

Double-dotted eighth rest

Ad libitum

Fortepiano

Augmented chord symbol

Dominant 7th chord symbol

Fermata

Opus

Una corda

Diminished chord symbol

Tenuto

Theory Level 12 – Terms and Definitions

Fill in each blank with the correct word from the word list. This worksheet includes the new terms for Level 12 plus a review of terms from previous levels.

Word List

affettuoso
ben
cadenza
calando

cantabile
giocoso
martellato
non troppo

ostinato
pesante
picardy third
quasi

rubato
senza
scherzando
tremolo

- _____ A cadence at the end of a minor key piece where it resolves to a Major tonic chord
- _____ Well, very
- _____ Rapid repetition of a pitch or between two pitches
- _____ As if
- _____ Brilliant, showy musical passage
- _____ Not too much
- _____ Heavy, weighty
- _____ A clearly defined melodic/rhythmic pattern that is repeated persistently throughout a composition
- _____ In a singing style
- _____ Joyful or playful
- _____ Hammered
- _____ Without
- _____ Playful
- _____ Expressive variation of tempo
- _____ Tender, warm
- _____ Becoming softer and slower