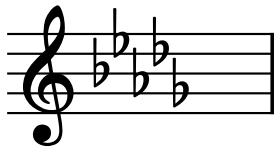
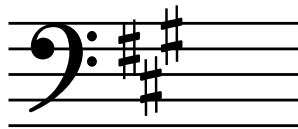


OMTA THEORY LEVEL 11 — PIANO

Draw the key signatures.

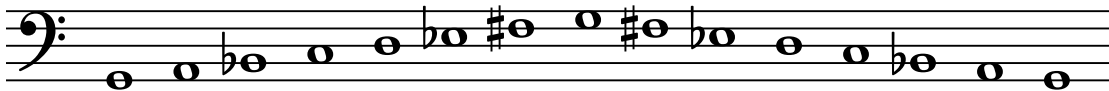


D \flat Major

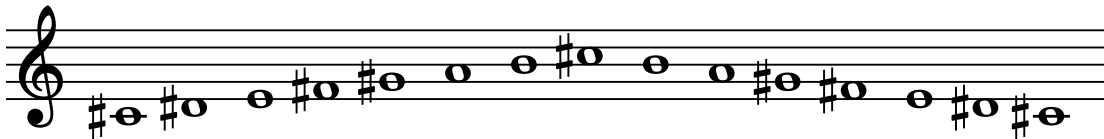


f# minor

Write the name of the tonic note of each scale and circle whether the scale is Major, natural minor, harmonic minor, or melodic minor.



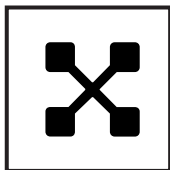
Tonic: G Major
 (G) natural minor
 (G) **harmonic minor**
 melodic minor



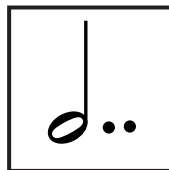
Tonic: C# Major
 (C#) **natural minor**
 (C#) harmonic minor
 melodic minor

Draw the correct answer in the box.

Double sharp



Double-dotted half note



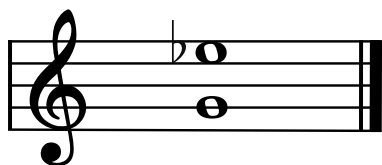
OMTA THEORY LEVEL 11 — PIANO

Music Example

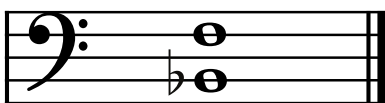


OMTA THEORY LEVEL 11 — PIANO

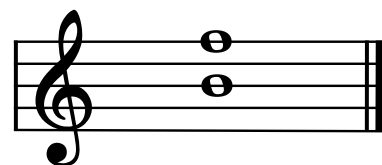
Label the intervals. Use Major, minor, Perfect, Augmented, or diminished in the answer.



minor 6th

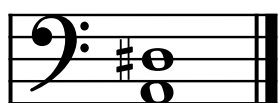


Perfect 5th

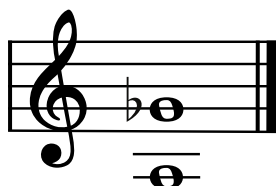


diminished 5th

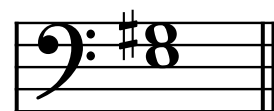
Draw the interval above each note using a whole note. Use accidentals as needed.



Augmented 4th



diminished 7th



Major 3rd

Match the terms with the definitions. Write the letter of the correct definition on the blank line.

TERMS

I

trill

E

a cappella

C

con fuoco

B

half cadence

F

submediant

D

mediant

G

scherzando

A

largo

J

authentic cadence

H

deceptive cadence

DEFINITIONS

A. Very slow

B. Any cadence that ends in on V

C. With fire

D. Scale degree three

E. Unaccompanied

F. Scale degree six

G. Playful

H. When the dominant chord (V) resolves to a chord other than the tonic (I), usually V-vi or V-VI

I. Alternation of two notes a second apart

J. Cadence consisting of a V-I chord progression

TURN TO THE NEXT PAGE

OMTA THEORY LEVEL 11 — PIANO

Use the music example below to answer the questions on page 6. The first measure of each line is numbered—pick-up notes do not count as measures. Circle the correct answer or fill in the blank for each question.

Allegro non troppo

System 1: Measures 1-6. Treble clef, bass clef. Key signature: two flats. Time signature: 4/4. Measure 1 is a pick-up measure. Dynamics: *p* (piano) in measure 2, *f* (forte) in measure 5. Articulation: accents on notes in measures 1, 2, 3, 4, 5, and 6.

System 2: Measures 7-12. Treble clef, bass clef. Measure 7 is numbered 10. Dynamics: *p* in measure 8, *f* in measure 9, *p* in measure 10, *f* in measure 11. Articulation: trills (*tr*) in measures 9 and 11.

System 3: Measures 13-18. Treble clef, bass clef. Measure 13 is numbered 17. Dynamics: *p* in measure 14, *f* in measure 17. A chord in measure 18 is circled.

System 4: Measures 19-24. Treble clef, bass clef. Measure 19 is numbered 25. Dynamics: *p* in measure 20, *f* in measure 23.

System 5: Measures 25-33. Treble clef, bass clef. Measure 25 is numbered 34. Articulation: trills (*tr*) in measures 26 and 27.

System 6: Measures 34-39. Treble clef, bass clef. Measure 34 is numbered 39. A chord in measure 39 is circled.

OMTA THEORY LEVEL 11 — PIANO

The music example is in the key of E \flat Major. Include Major or minor in the answer.
(e \flat major)

What should be the time signature of this piece?

2
4

3
4

4
4

The root of the circled triad in measure 24 is which scale degree in the key of the piece?

Tonic

Submediant

Supertonic

What type of triad is circled in measure 24?

minor

Major

diminished

What type of scale is bracketed in measures 34 and 35?

E \flat Major

E Major

e minor

What type of chord progression is circled in measures 43 and 44?

V7-I

ii-V

I-vi

What type of cadence is circled in measures 43 and 44?

Plagal

Deceptive

Authentic

What does the tempo marking mean?

Fast, but not too fast

Fast, but not too slow

Faster than allegro

END OF WRITTEN EXAM

Aural Test = 1 point each question

OMTA AURAL AWARENESS LEVELS 11 & 12

Aural Score

10

1. Major natural minor harmonic minor **melodic minor**

2. Major natural minor **harmonic minor** melodic minor

3. Major **minor** diminished Augmented

4. minor 6th **Major 6th** minor 7th

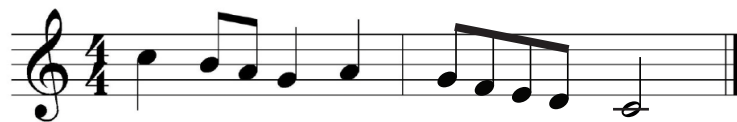
5. Authentic **Plagal** **Deceptive**

6. Authentic **Plagal** Deceptive

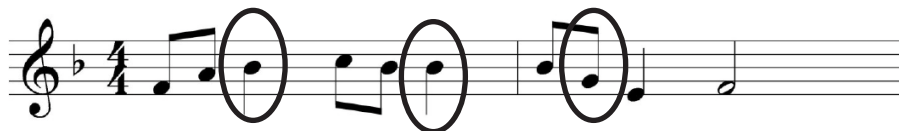
7.



8.



9.



10.



END OF AURAL AWARENESS EXAM