

Written Test = 2 points each question

OMTA THEORY LEVEL 1 – PIANO

Student's Name KEY

Teacher's Name _____

Written Score	90
Aural Score	10
TOTAL SCORE	100

Test code: Florence Price

Write the letter name of each note on the line below.

A musical staff with a grand staff (treble and bass clefs). The notes are: Bass clef, first space (F); Treble clef, second space (D); Bass clef, second space (G); Treble clef, fourth space (A).

 A G G D

A musical staff with a grand staff (treble and bass clefs). The notes are: Treble clef, first space (F); Bass clef, second space (G); Treble clef, third space (D); Bass clef, fourth space (A).

 C F E B

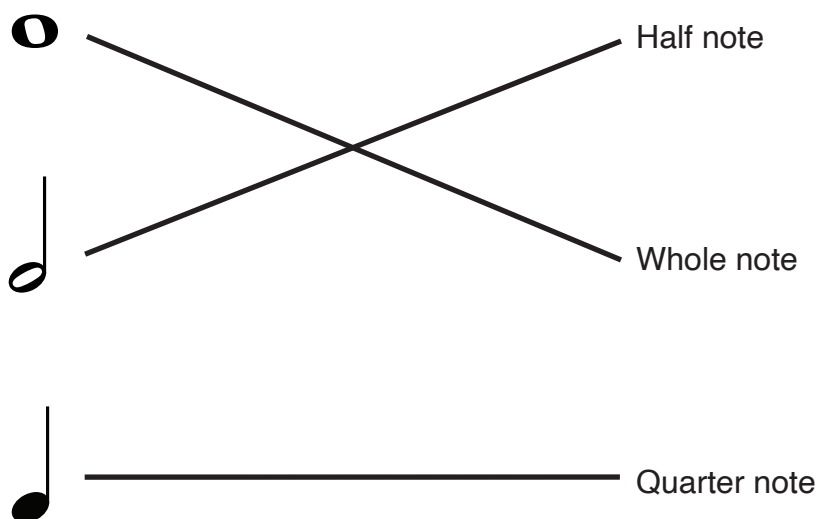
Complete the music alphabet.

A B C D E F G
(2 pts.) (2 pts.)

TURN TO THE NEXT PAGE

OMTA THEORY LEVEL 1 — PIANO

Draw a line from each note to its name.



In the time signature $\frac{4}{4}$, there are 4 beat(s) in each measure.

In the time signature $\frac{2}{4}$, there are 2 beat(s) in each measure.

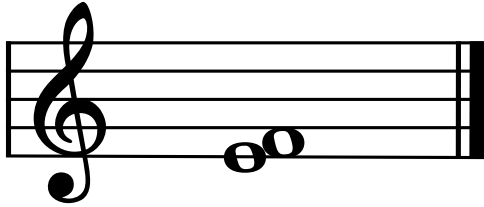
In the time signature $\frac{3}{4}$, there are 3 beat(s) in each measure.

The 4 on the bottom of the time signatures $\frac{2}{4}$, $\frac{3}{4}$, and $\frac{4}{4}$ tells us that the quarter note receives 1 beat(s).

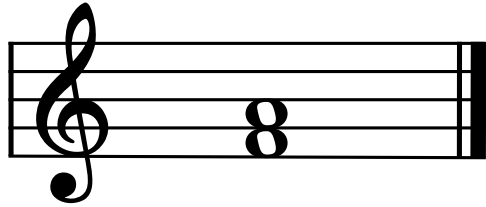
TURN TO THE NEXT PAGE

OMTA THEORY LEVEL 1 — PIANO

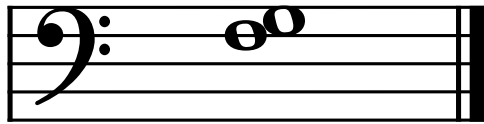
Do these notes step or skip?



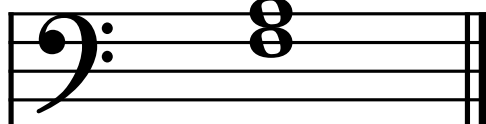
step



skip



step



skip

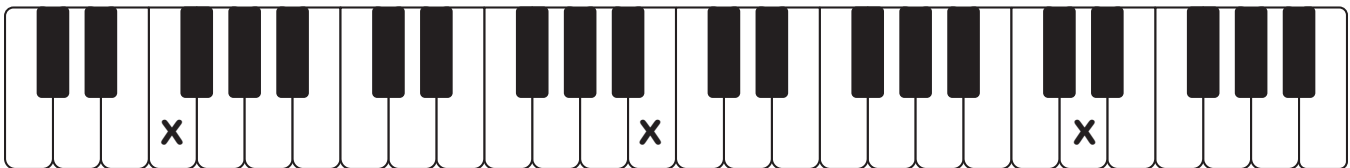
On the lines below, write the letter name of each key marked on the keyboard.



E

A

C



F

B

D

OMTA THEORY LEVEL 1 — PIANO

Match the terms with the definitions. Write the letter of the correct definition on the blank line.

Terms

 H double bar line

 D bar line

 K repeat sign

 G skip

 A staff

 E measure

 J time signature

 C step

 B legato

 F staccato

 I forte, *f*

 L dynamics

Definitions

A. Five lines and four spaces

B. To play smoothly, connected

C. From a line to a space or a space to a line on the staff

D. A line dividing the staff into measures

E. The space between two bar lines

F. A dot placed above or below a notehead telling us to play separated or disconnected

G. From a line to a line or a space to a space on the staff

H. Two bar lines close together meaning the end of a piece of music

I. Loud

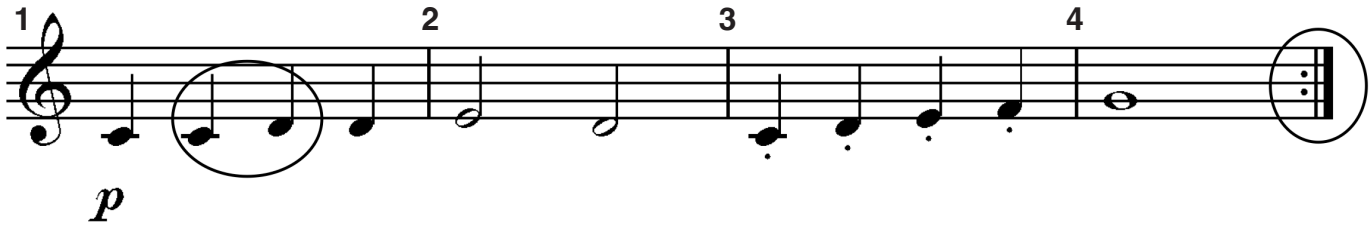
J. Two numbers, one placed on top of the other, at the beginning of a piece of music

K. Two bar lines close together with two dots meaning to "play again"

L. How loudly or softly to play music

OMTA THEORY LEVEL 1 – PIANO

Use the music example below to answer the following questions. The measures are numbered. Circle the correct answer or fill in the blank for each question.



How should the quarter notes in measure 3 be played?

Forte, loud

Staccato

Legato

How many measures are in the music example above? 4

Are the notes circled in measure 1 a step or a skip?

Step

Skip

Which clef is the example written in?

Treble

Bass

What is the dynamic marking in measure 1?

Piano, soft

Forte, loud

Play again

What is the music symbol in measure 4?

Double bar line

Bar line

Repeat Sign

Aural Test = 1 point each question

OMTA AURAL AWARENESS LEVELS 1 & 2

Aural Score

10

1. High

Low

2. Forte

Piano

3. Same

Different

4. Higher

Lower

5. Legato

Staccato

6. Going higher

Going lower

7. Higher

Lower

8. Legato

Staccato

9. Higher

Lower

10. Higher

Lower

END OF AURAL AWARENESS EXAM