

OMTA THEORY LEVEL 2 — PIANO

Student's Name _____

Teacher's Name _____

Written Score	
Aural Score	
TOTAL SCORE	

Test code: Florence Price

Write the letter name of each note on the line below.

A musical staff with a grand staff (treble and bass clefs) containing five measures. The notes are: Measure 1: Treble clef, middle C (C4); Bass clef, G3. Measure 2: Treble clef, D4; Bass clef, A3. Measure 3: Treble clef, E4; Bass clef, B3. Measure 4: Treble clef, F4; Bass clef, C4. Measure 5: Treble clef, G4; Bass clef, D4.

Draw one note on the staff for each of the notes below. Use whole notes.

A musical staff with a grand staff (treble and bass clefs) containing four measures. The notes are: Measure 1: Treble clef, F4; Bass clef, C4. Measure 2: Treble clef, E4; Bass clef, A3. Measure 3: Treble clef, G4; Bass clef, B3. Measure 4: Treble clef, A4; Bass clef, D4.

C

A

B

D

OMTA THEORY LEVEL 2 — PIANO

Draw a line from each note to its name.



Half note



Whole note



Dotted half note

In the time signature $\frac{4}{4}$, there are _____ beat(s) in each measure.

The 4 on the bottom of the time signatures $\frac{2}{4}$, $\frac{3}{4}$, and $\frac{4}{4}$ tells us that the quarter note receives _____ beat(s).

Circle the correct time signature for each music example.

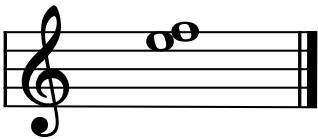
$\frac{2}{4}$ $\frac{3}{4}$ $\frac{4}{4}$



$\frac{2}{4}$ $\frac{3}{4}$ $\frac{4}{4}$



Are these notes a step or a skip apart?



OMTA THEORY LEVEL 2 — PIANO


Match the terms with the definitions. Write the letter of the correct definition on the blank line.

TERMS

_____ *mp*

_____ tempo

_____ sharp

_____ 

_____ flat

_____ *mf*

DEFINITIONS

A. Treble clef, also known as “G” clef

B. The speed of a music composition

C. Medium or moderately loud

D. Medium or moderately soft

E. Raises a note one half step

F. Lowers a note one half step

Fill in each blank with the correct word from the word list.

WORD LIST

Dynamics
Whole step
Ritardando (ritard or rit.)

Half step
Interval
Legato

To play smoothly and connected _____

The distance between two notes _____

An interval equal to two half steps _____

The closest distance between two notes _____

How loudly or softly to play music _____

To play gradually slower _____

OMTA THEORY LEVEL 2 — PIANO

Use the music example below to answer the following questions. The measures are numbered. Circle the correct answer or fill in the blank for each question.

The time signature for the music example tells us there are _____ beats in each measure.

The music example is written in which clef?

Treble clef

Bass clef

What is the definition of the dynamic marking below measure 1?

Loud

Medium soft

Soft

What is the interval between the notes circled in measure 2?

Skip

Step

What is the accidental for the note circled in measure 3?

Flat

Sharp

What is the definition of the change in tempo marking above measure 4?

To play gradually faster

To play gradually slower

What is the name of the symbol circled in measure 4?

Interval

Repeat sign

Double bar line

OMTA AURAL AWARENESS LEVELS 1 & 2

Aural Score

- | | | |
|-----|--------------|-------------|
| 1. | High | Low |
| 2. | Forte | Piano |
| 3. | Same | Different |
| 4. | Higher | Lower |
| 5. | Legato | Staccato |
| 6. | Going higher | Going lower |
| 7. | Higher | Lower |
| 8. | Legato | Staccato |
| 9. | Higher | Lower |
| 10. | Higher | Lower |