

OMTA THEORY LEVEL 4 — PIANO

Student's Name _____

Teacher's Name _____

Written Score	
Aural Score	
TOTAL SCORE	

Test code: Florence Price

Write the letter name of each note on the line below. Use accidentals as needed.

Draw the notes on the staff. Use whole notes.

Draw the correct symbol in each box.

Fermata

Dotted half note

Flat

Quarter rest

Two eighth notes beamed

Eighth rest

Single eighth note

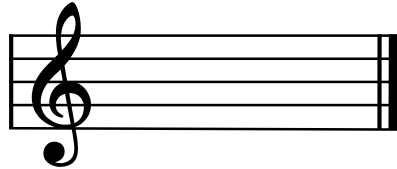
Sharp

OMTA THEORY LEVEL 4 — PIANO

Draw the correct key signature for each Major key.

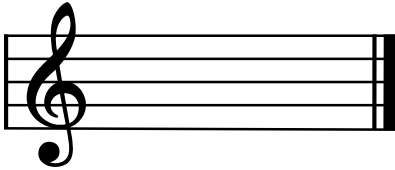


F Major



G Major

Draw the Major triads. Use whole notes.



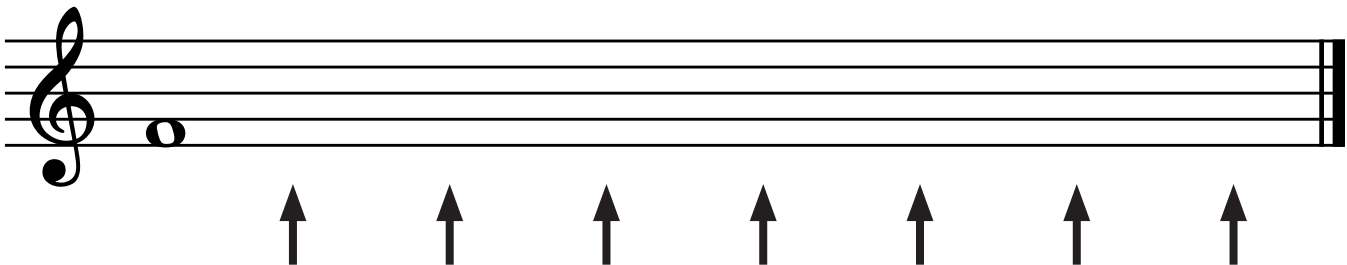
F Major



G Major

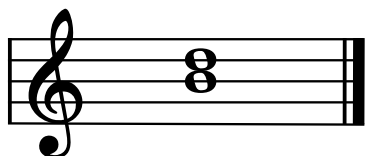
Write the pattern of whole steps and half steps used in a Major scale. Write **W** for whole step and **H** for half step.

Draw a Major scale one octave going up starting with the note provided. Draw one whole note on the staff above each arrow. Use accidentals as needed. Do not use a key signature.

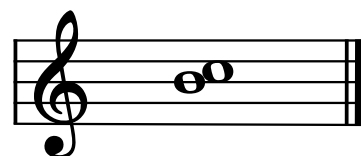


OMTA THEORY LEVEL 4 — PIANO

Label the intervals as a second (2nd), third (3rd), or fourth (4th).

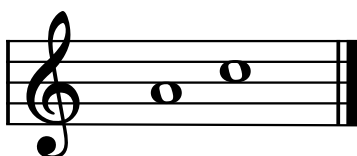


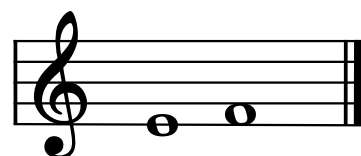




Label the intervals as harmonic or melodic.







Match the terms with the definitions. Write the letter of the correct definition on the blank line.

TERMS

_____ fine

_____ moderato

_____ ritard

_____ parallel motion

_____ accent

_____ melodic interval

_____ contrary motion

_____ harmonic interval

DEFINITIONS

A. A medium or moderate tempo, faster than Andante

B. Music moving in the same direction

C. The end

D. A note that is played louder than the notes around it

E. The distance between two notes which are played together

F. The distance between two notes which are played separately

G. Music moving in opposite directions

H. To play gradually slower

OMTA THEORY LEVEL 4 — PIANO

Use the music example below to answer the following questions. The measures are numbered. Circle the correct answer or fill in the blank for each question.

Allegro

1 2 3 4 D.C. al Fine

mp

The time signature for the music example tells us there are _____ beats in each measure.

What is the key of the music example?

F Major

G Major

C Major

What is the meaning of the tempo marking?

A walking tempo

Slow

A quick, fast tempo

The curved lined connecting the A-flat in measure 2 to the A-flat in measure 3 is called a_____.

Slur

Tie

Connector

What is the name of the accidental circled in measure 3?

Natural

Flat

Sharp

What is the meaning of D.C. al Fine above measure 4?

Return to the beginning and play to Fine

Return to the sign and play to Fine

What is the meaning of the dynamic markings below measure 1?

Start medium soft and get gradually louder

Start medium loud and get gradually softer

OMTA AURAL AWARENESS LEVELS 3 & 4

Aural Score

- | | | |
|-----|------------------|------------------|
| 1. | Same | Different |
| 2. | Staccato | Legato |
| 3. | Higher | Lower |
| 4. | Piano | Forte |
| 5. | Legato | Staccato |
| 6. | High | Low |
| 7. | Higher | Lower |
| 8. | Second | Third |
| 9. | Gradually louder | Gradually softer |
| 10. | Higher | Lower |