

Written Test = 2 points each question

OMTA THEORY LEVEL 5 — PIANO

Student's Name KEY

Teacher's Name _____

Written Score	90
Aural Score	10
TOTAL SCORE	100

Test code: Florence Price

Write the letter name of each note on the line below. Use accidentals.

A musical staff with a treble clef and a key signature of one sharp (F#). The staff contains four whole notes: C# (first line), Cb (second space), D# (third space), and E (fourth space).

C# C^b D# E

Draw each note on the staff. Use whole notes. Use accidentals, including naturals.

Four musical staves, each with a whole note. The first staff is treble clef with a Bb note. The second staff is bass clef with a D# note. The third staff is treble clef with an Eb note. The fourth staff is bass clef with an Eb note.

Draw one **note** under each arrow to complete the measures in the given time signatures.

Three musical staves in treble clef. The first staff is in 3/4 time and has a quarter rest followed by a quarter note, with an arrow pointing to the blank space before the quarter note. The second staff is in 3/4 time and has a quarter rest followed by a quarter note, with an arrow pointing to the blank space before the quarter note. The third staff is in 4/4 time and has a dotted quarter note followed by an eighth note, with an arrow pointing to the blank space before the dotted quarter note.

OMTA THEORY LEVEL 5 — PIANO

Draw one **rest** under each arrow to complete the measures in the given time signatures.

The first staff is in 3/4 time and contains a quarter note, a quarter note, a quarter note, and a half note. An arrow points down to the half note. The second staff is in 4/4 time and contains a whole rest, a quarter note, a quarter note, a quarter note, and a quarter note. An arrow points down to the whole rest.

On the lines below, write the total time value of the note(s) and rest(s) in $\frac{4}{4}$ time.

NOTES AND RESTS

1/2 beat

1 1/2 beats

2 beats

4 beats

1 beat

TIME VALUE LIST

1/2 beat

1 beat

1 1/2 beats

2 beats

3 beats

4 beats

Which Major key signature has one flat? Circle the correct answer.

C Major

B Major

F Major

Which minor key signature has one sharp? Circle the correct answer.

a minor

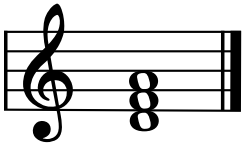
e minor

g minor

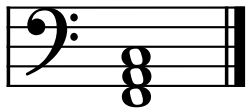
TURN TO THE NEXT PAGE

OMTA THEORY LEVEL 5 — PIANO

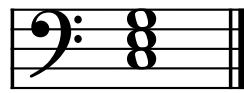
On the blank lines, write the root of each triad and circle whether the triad is Major or minor.



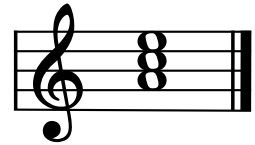
d Major
(D) minor



F Major
(f) minor



C Major
(c) minor

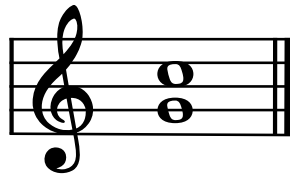


a Major
(A) minor

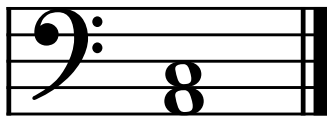
Draw the interval above each note using a whole note. Use accidentals as needed.



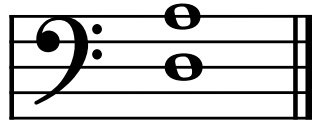
Major 3rd



4th



minor 3rd

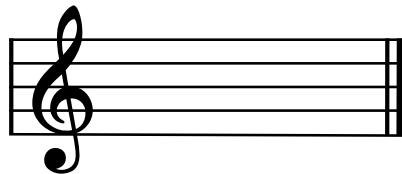


5th

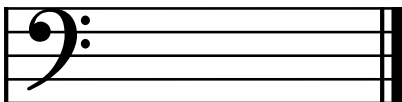
Draw the key signatures.



F Major



C Major



a minor



e minor

OMTA THEORY LEVEL 5 — PIANO

Which scale degree is raised in the harmonic minor scale? Circle the correct answer.

Seventh

Fifth

Sixth

Draw the **d harmonic minor scale** one octave going up, one note above each arrow. Use whole notes. Use accidentals as needed. Do not use a key signature. (2 pts.)

Match the terms with the definitions. Write the letter of the correct definition on the blank line.

TERMS

 D fortissimo

 E harmonic minor scale

 F natural minor scale

 A coda

 B D.S. al Fine

 C pianissimo

DEFINITIONS

A. A section or passage added to the end of a musical composition

B. Return to the sign and play to Fine

C. Very soft

D. Very loud

E. A natural minor scale with a raised 7th degree

F. Scale beginning on the 6th scale degree of the relative Major key

OMTA THEORY LEVEL 5 — PIANO

Use the music example below to answer the following questions. The measures are numbered. Circle the correct answer or fill in the blank for each question.

1 *mf* *Andante* 2 *rit.* 3 *p* *a tempo* 4

What is the time signature for this music example?

3
4

2
4

4
4

What is the meaning of the tempo marking?

A moderate tempo

A walking tempo

A quick, fast tempo

What is the key of the music example?

e minor

d minor

G Major

What is the meaning of *a tempo* above measure 3?

To play gradually faster

A quick, fast tempo

Return to the original tempo

Is the triad circled in measure 4 Major or minor?

Major


minor


END OF WRITTEN EXAM

Aural Test = 1 point each question

OMTA AURAL AWARENESS LEVELS 5 & 6

Aural Score
10

1. 

2. 

3. Andante Allegro

4. Parallel motion Contrary motion

5. 4th 3rd

6.  Same Different

7. Crescendo Diminuendo

8. Accelerando Ritardando

9. 

10. 

END OF AURAL AWARENESS EXAM